



GOVERNMENT OF THE PEOPLE'S REPUBLIC OF BANGLADESH
MINISTRY OF LOCAL GOVERNMENT, RURAL DEVELOPMENT AND CO-OPERATIVES
Local Government Engineering Department (LGED)
Agargaon, Sher-E-Bangla Nagar, Dhaka-1207

Final Report on Study-03
‘My Village -My Town’ -Technical Assistance Project
“Feasibility Study for Rural Connectivity including Multi-Modal Transport
System in Char and Haor Areas”

Mirzapur, Tangail



dat·Ex
DATA EXPERTS
Data Experts (Pvt.) Limited

Delight
Engineers & Consultants Ltd. (DECL)
Delight Engineers & Consultants Ltd.

July, 2022

CONTENTS

GLOSSARY	i
Abbreviation	ii
Background	iii
1 Description of the Upazila	1
1.1 Geography and Demography	1
1.2 Education Features.....	1
1.3 Rural Road Communications.....	1
1.4 Agriculture, Food Production and Fisheries	1
1.5 Growth Centre and Hatbazar.....	1
2 Location of the Upazila	2
3 Approach & Methodology	3
3.1 Study Team Composition.....	3
3.2 Study Area.....	3
3.3 Database Review and Analysis	3
3.4 Prioritization Criteria of Sub-projects	4
3.5 Weightage Distribution for Prioritization.....	4
3.6 Mapping Hard-to-reach Villages & Population.....	5
3.7 Wrap Up Meeting.....	5
3.8 Validation Workshop.....	5
3.9 National Workshop.....	6
4 Rural Road Connectivity to the Villages	7
4.1 Summary of the Village Connectivity.....	7
4.2 Villages and their connectivity – Union level.....	7
4.3 Map of Hard-to-Reach Villages & Proposed Roads.....	12
5 Consultation Meeting & Field Visit	13
5.1 Upazila Level Meeting	13
5.2 Visit to Case Study Union	13
6 Data Collection & Analysis	15
6.1 Proposed Riverine routes	15
6.2 Proposed Roadway for Hard-to-Reach Villages:.....	15
6.2.1 Proposed All Weather Routes:.....	16
6.2.2 Proposed Submersible Routes:.....	21
6.2.3 Proposed Roads for Hard-to-Reach Villages Having No ID:	21
6.2.4 Priority for Road Development	22
7 Conclusion & Recommendations	23
Annexure - 1.....	24
Annexure - 2.....	27

List of Figures

Figure 1: Location Map of the Upazila.....	2
Figure 2: Prioritization indicators & their weightage values	5
Figure 3: The Upazila Map	12
Figure 4: Upazila level Consultation Meeting.....	13
Figure 5: Condition of the visited road alignment at Case Study Union	13
Figure 6: Condition of the visited road alignment at Case Study Union	14

List of Tables

Table 1: Total villages in the Unions and their connectivity.....	7
Table 2: Union wise connected & Hard-to-Reach Villages and their population	7
Table 3: Proposed riverine routes of the Upazila	15
Table 4: Summary of the rural roads in the Upazila.....	15
Table 5: Proposed all weather roads in the Upazila	16
Table 6: Proposed submersible roads in the Upazila	21
Table 7: Proposed roads for Hard-to-Reach Villages having No ID	21
Table 8: Considered weightage values for the prioritization.....	22

GLOSSARY

Hard-to-reach Villages mean in the Study those villages that are not connected by any paved road with the respective Upazila HQ and/or Union Parishad, and to the nearest economic activity hub and social service centres. The following explanations is important for the concept of hard-to-reach villages.

- In haor areas, Village connected with submersible roads dry season and connected with riverine/haor routes in monsoon season has been considered as accessible and excluded from hard-to-reach villages.
- Within Upazila, Villages that needs a bridge to connect has not considered as hard-to-reach villages.
- In case of island Upazilas, villages that are accessible with paved roads from Upazila HQ has been considered as accessible and excluded from hard-to-reach villages.
- In case of villages that are connected with HBB (Herring-Bone-Bond) or Brick flat soling routes has been considered as hard-to-reach villages

Mauza is normally the geographical expression of a unit of landmass for revenue settlement and revenue collection, whereas, the village is a human settlement within a Mauza with strong social bond. Within a Mauza there could be more than one village.

Union Bangladesh has 3-tiers local government system: District, Upazila and Union. Union is the lowest level of local government below Upazila Parishad

Upazila Sub-District; the third level of government administration below division and District.

Hat Synonym of bazar or market

Walking Trail mean in the Study the village pathway or access used for walking by commuters, in the most cases do not have gazetted or established or commonly used alignment, and to the most, passable by bi-cycle or motor bike. These village trails are not passable by motorized jeep or mini truck or emergency service vehicle or not even by any three wheelers.

Unpaved Roads have no pavement or surface material. They are usually the earthen roads.

Vulnerability is the human dimension of risk that is defined as conditions determined by physical, social, economic, environmental, political, cultural and institutional factors or processes which increases the likelihood of an individual or a community to the impacts of shocks and hazards.

Climate-Resilience is expressed as the ability of a community to resist, absorb, adapt to and recover better from the impacts of disaster like flood and landslides in a sustainable way.

ABBREVIATION

ADB	– Asian Development Bank
BBS	– Bangladesh Bureau of Statistics
BC	– Bitumen Carpeting
DatEx	– Data Expert (Pvt.) Limited
DECL	– Delight Engineers and Construction Ltd.
DoE	– Department of Environment
DPHE	– Department of Public Health Engineering
DPP	– Development Project Proposal
FGD	– Focus Group Discussion
GIS	– Geographic Information System
GOB	– Government of Bangladesh
HBB	– Herring-Bone-Bond
HQ	– Headquarter
HTRV	– Hard-to-Reach Village
JV	– Joint Venture
KII	– Key Informant Interview
LGD	– Local Government Division
LGED	– Local Government Engineering Department
LGI	– Local Government Institute
MVMT	– My Village My Town
NGO	– Non-Government Organization
PD	– Project Director
PMO	– Project Management Office
RCC	– Reinforced Concrete
RHD	– Roads & Highways Department
SDGs	– Sustainable Development Goals
TA	– Technical Assistance Project
UE	– Upazila Engineer
UNDP	– United Nations Development Programme
UNO	– Upazila Nirbahi Officer
UNR	– Union Road
UP	– Union Parishad
UPZ	– Upazila Road
VRA	– Village Road A
VRB	– Village Road B

BACKGROUND

Context of the Project

The Government of Bangladesh made massive plans to ensure equitable development around the country. Under this development philosophy, the GoB requirements are to reduce rural-urban divide to foster developmental benefits for all citizens. As part of this, the government declared an election manifesto on the eve of the national parliament election 2018 uniting the theme **Bangladesh on the March Towards Prosperity** aiming at transforming Bangladesh into a developed nation by 2041. Under this, villages have been considered the basic unit of prosperity for building a developed nation.

This firm commitment was declared following the light of the philosophy of the Father of Nation Bangabandhu Sheikh Mujibur Rahman to build ‘Sonar Bangla’ (Golden Bangla) through inclusiveness, balanced and development for all.

Following the philosophy of the Father of the Nation, the government declared election manifesto 2018 titled ‘My Village-My Town’- Extension of Modern Civic Amenities in Every Villages. The Local Government Division under the Ministry of Local Government, Rural Development and Cooperatives has prepared a comprehensive work plan to make this election commitment a reality. The Local Government Division with its two agencies, Local Government Engineering Department (LGED) and Department of Public Health Engineering (DPHE) has undertaken a technical assistance project named ‘My Village-My Town’- Technical Assistance Project. Under this project, 36 studies and 30 guidelines are being developed on eight thematic components related to mandate of Local Government Division. The eight thematic components are Rural Communications, Growth Centre and Hat bazar, Rural Water Supply and Sanitation, Rural Waste Management, Community Space and Recreation Facilities, Upazila Masterplan, Rural Housing and Capacity building of Upazila and Union Parishad. Besides this, a coordination framework is being developed among the other ministries involved in implementation of My Village-My Town election manifesto. It is notable to mention that a coordination committee has been formed comprising 21 ministries to implement the program in a coordinated way under the leadership of the Minister of Local Government, Rural Development and Co-operatives.

Context of the Report

This report is a part of study of the component ‘Rural Connectivity’. Rural connectivity is the basic of all amenities in the villages. Rural connectivity works as the conduit that can supply a number of bare necessities such as access to market, health, education, employment etc. In general Bangladesh has remarkable progress in rural connectivity. Instead of this, a number of regions of the country are geographically sensitive where rural connectivity is not easy and has lot of challenges. These regions are -Haor, Beel, Hills, Chars, Islands etc. The people residing in these regions has considerably low access to civic amenities compared to other villages of the country. Therefore, study and plan development of improvement of rural connectivity is one of the important assignments of the technical assistance project. The project undertook Upazila based special study on the villages of these geographically sensitive regions that are mentioned before.

This report contains rural connectivity status and priority plan of the **Mirzapur** Upazila of **Tangail** District.

1 DESCRIPTION OF THE UPAZILA

1.1 GEOGRAPHY AND DEMOGRAPHY

The geographical area of Mirzapur Upazila is 373.88 square kilometers and has 14 Unions, 202 mouzas and 210 villages. The Upazila is 30 km away from the District headquarters of Tangail. There are 2 rivers flowing over the Upazila- Bangshal & Louhajang. The total population of the Upazila is 4,24,000 of which 2,03,000 are male and 2,21,000 female, total number of households are 94,000 and average household size is 4.28 with a population density of 1091 (as per BBS, population census 2011).

1.2 EDUCATION FEATURES

According to the information of the relevant local government offices there are 133 govt. primary, 45 registered primary, 5 non-government primary, 45 NGO schools & 112 kindergarten schools. On the other hand, Mirzapur has 53 non-government high schools, one school & college (operating jointly), with one govt college, 7 private colleges, and 26 madrashas. The literacy rate for the Upazila is 55.5% as per BBS 2011.

1.3 RURAL ROAD COMMUNICATIONS

Bangladesh scored in the rural accessibility index at around 87 per cent among South Asian and some other Africa countries. Generally, the people of Bangladesh get all weather within 2 kilometers adjacent to their living places. But the feature of rural roads communications in Mirzapur Upazila is contrasted. There are many villages, disconnected from the developed paved road network that brings huge sufferings for the people of the villages. The total rural road network of Mirzapur is 1014.47 km and out of which, 346.40 km paved and 668.07 km earthen.

1.4 AGRICULTURE, FOOD PRODUCTION AND FISHERIES

Agriculture has a major importance for the economy of the people of Mirzapur. There are 92,390 acres of arable land in the Upazila. In the fiscal year 2010-11 the Rice production was 62, 17195 & 79839 metric tons for Aus, Aman & Boro seasons respectively. The Upazila also produced 533 metric tons of Wheat, 2,958 metric tons of Jute, 20,830 metric tons of Sugarcane, 2,948 metric tons of Potato and 6,619 metric tons of Oilseed in the same fiscal year 2010-11. A notable quantity of fruits and vegetables are also produced here in this Upazila.

There also exists only 75 poultry & 3 dairy farms. There exists 2,944 acres of pond/ dighee/ other floodplain area that produced 826 metric tons of fishes.

1.5 GROWTH CENTRE AND HATBAZAR

Growth Centre and Rural Hatbazar is one of the main centres of the rural economy. Hatbazar is like the heart for the development of the rural economy. Rural hatbazar plays a role in increasing production and creating employment impacting on the supply chain of agriculture and non-agriculture products. There are 39 hatbazar and 4 growth centers in the Upazila. The structural development of hatbazar and growth is pivotal to boosting up the rural economy. A details of the growth center & hatbazar of the Upazila has been attached in the [Annexure-1](#).

2 LOCATION OF THE UPAZILA

Mirzapur Upazila is located in the Central Bangladesh under Tangail District in Dhaka Division. The location has been shown in the map. It is surrounded by Sakhipur and Basail Upazilas on the north, Kaliakair and Dhamrai Upazilas on the south, Kaliakair Upazila on the east, Delduar and Nagarpur Upazilas on the west. The Upazila is located within the **Brahmaputra River Basin**. The river, Brahmaputra is a trans-boundary river which flows through Tibet (mountains), India (Arunachal Pradesh & Assam), and Bangladesh and is the 9th largest river in the world by discharge. The river is prone to catastrophic flooding in the summer & monsoon (March – October) when the Himalayan snow melts along with the heavy rainfall in Meghalaya, India. This part of the year, the Brahmaputra discharges a large volume of water coming from upstream. The entire lower Brahmaputra (*i.e., the part inside Bangladesh, known as Jamuna River*) and its branches carry a large amount of water during monsoon that overflows the river's carrying capacity and inundates the river basin as well as the Upazila. The effects of flooding can be devastating and cause significant damage to crops and households, serious bank erosion with consequent loss of structures, land, and loss of many lives and livestock.

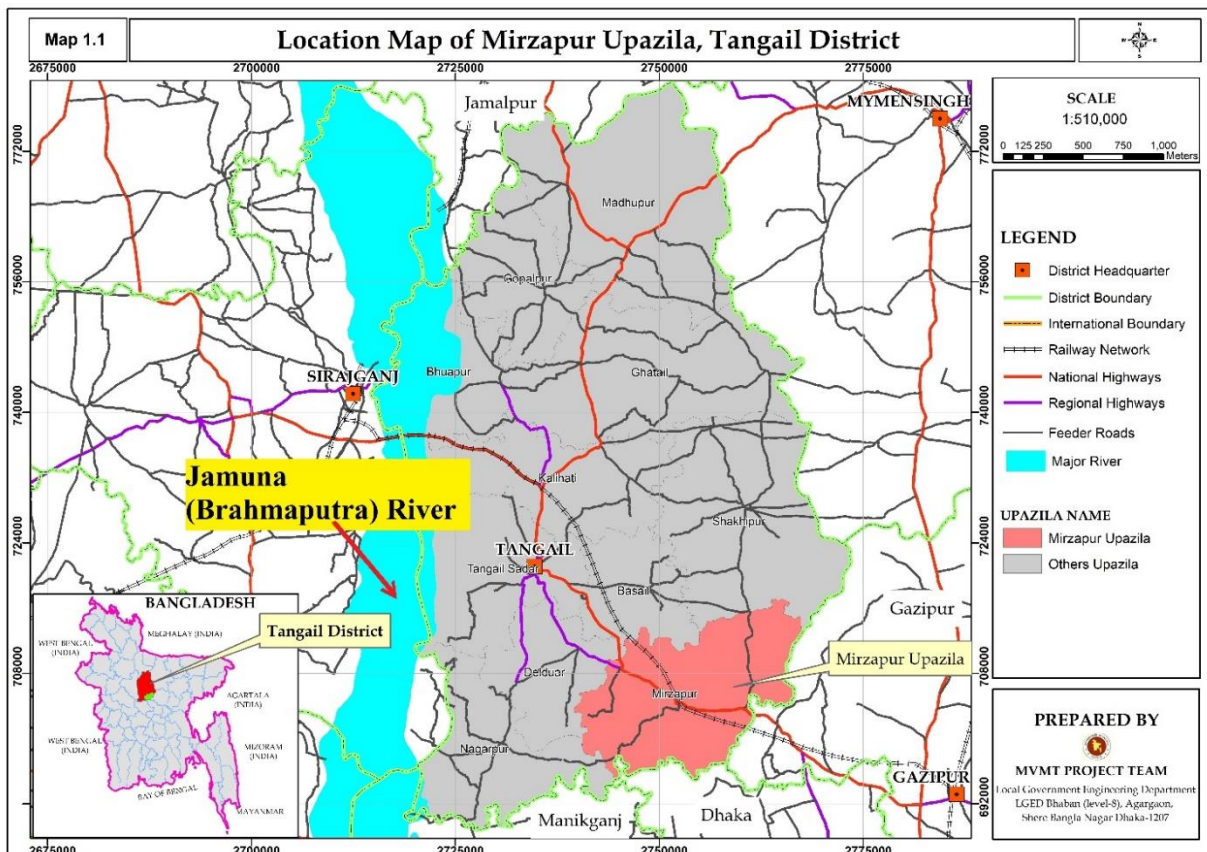


Figure 1: Location Map of the Upazila.

3 APPROACH & METHODOLOGY

3.1 STUDY TEAM COMPOSITION

A team consisting of Senior Rural Road Infrastructure Specialist, Associate Rural Infrastructure Specialist, Assistant Engineer engaged by Project Management Office (PMO) conducted the study. On the other hand, A team consisting of Deputy Team Leader cum Rural Infrastructure Engineer, Junior GIS expert and Junior Engineer engaged by consulting firm (datEx & DECL JV) conducted the study. Participatory approach to review the database and identify priority transport infrastructure needs ('sub-projects') was instrumental. At the stakeholder consultation meeting held in each District, the database was reviewed, priority needs identified and mapped working together with the LGI representatives and LGED technical team. LGED and LGI representatives were surveyed each Upazila for collection of detailed observations and validations of the proposed priority needs.

Stakeholder Consultation Meeting

- Hard-to-reach Village Database and database of sub-projects reviewed
- Prioritization of sub-projects for each Upazila with LGI and LGED representatives
- Hard-to-reach villages and priority sub-projects mapped in the LGED GIS Map

3.2 STUDY AREA

The Study was conducted in 72 Upazilas of haor areas, 3 Upazilas of Beel areas, 8 Upazilas of Char areas, and 4 Upazilas of Island areas during the period from December 2021 to June 2022. Apart from this, PMO team conducted the study in 50 Upazilas of Haor areas and rest of the Upazilas of Haor, Beel, Char and Island areas are conducted by consulting firm team. The Upazila technical staff of LGED supported in organizing stakeholder consultation meetings and in database review and mapping the Hard-to-reach villages and population during this study period. They also supported in the field work and authentication check by visits to the sub-projects in their respective Upazila, and looking at the feasibility of some proposed sub-projects from technical, social and environmental perspectives.

3.3 DATABASE REVIEW AND ANALYSIS

The Study applied both qualitative (e.g., focused group discussions and in-depth case study field work) and quantitative (structured and semi structured interviews) approach and methods in reviewing and conducting field work in all the haor areas to understand the need and impact of rural accessibility in remote village contexts. The most applied methods in the reviewing and conducting field work were:

- Key Informants Interview (KII)
- Focus Group Discussion (FGD)
- Case Study for authentication check and individual sub-project feasibility study.

- ❖ Review Hard-to-reach village database at the ‘Stakeholder consultation meeting’ participating by local government representatives such as UP chairman and members, Upazila chairman, vice-chairman, and UNO.
- ❖ FGD and KII were conducted using a checklist. Composition in the FGD included local community people: male and female, teacher, local farmer, trader, and student depending on the availability.
- ❖ KIIs of Union Chairman, Upazila chairman, UNO male and female, and teacher depending on availability.
- ❖ Authentication and feasibility check by visits to the sub-projects reviewed and listed for the 40 selected case study Unions under MVMT project.
- ❖ Survey with GPS machine and Google apps in collecting Hard-to-reach village location, landmark, chainage at gaps, village road at section vulnerable to land erosion damage, narrow existing width or sharp slope location.

3.4 PRIORITIZATION CRITERIA OF SUB-PROJECTS

Prepare a priority list of sub-projects by Upazilas that includes gazette ID roads and non-gazette roads (No ID) with attributes like name and number of villages and population. The criteria used in the prioritization are described below.

- Population, travel time needed from the remotest villages to the Upazila HQ, road type and cost per km per 1000 population are the indicators weighted giving a value in a formula.
- Priority is given to single connection with no alternative transport road and multi-modal transport route to connecting the villages with Upazila HQ and Union Parishad, growth centre and important markets and social service centres; villages with higher number of population and travel time get higher weightage;
- Priority is given to roads, ghats and collection points that will facilitate agricultural diversification, reduce transportation cost, ensure fair price and create farm and non-farm employment and income;
- Priority is given to roads’ development and inland waterways dredging that will enable year-round mobility of general public and villagers in particular, health workers, teachers and students, and tourists to facilitate tourism development, quality education and better health service in the District and region;
- Special priority is given to sub-projects of roads, riverine routes/inland waterways that will mainstream deprived communities living in the hard-to-reach villages;
- Identified sub-projects more cost-effectiveness than others using per km per 1000 population cost for each sub-project;
- Every sub-project(s) is to be climate-resilient, sustainable and cost-effective.

3.5 WEIGHTAGE DISTRIBUTION FOR PRIORITIZATION

The approaches and methodologies of the Study for reviewing database and prioritization are synthesized in the diagrams below, noting that the proposed sub-projects of roads in the databases are prioritized based on weightage calculated on the set criteria (as shown in the diagram). People’s demand and local need are reflected in the prioritization which were

determined by the Study, working together with LGI representatives and LGED field level technical staff at the stakeholder consultation meetings held in each Upazila.

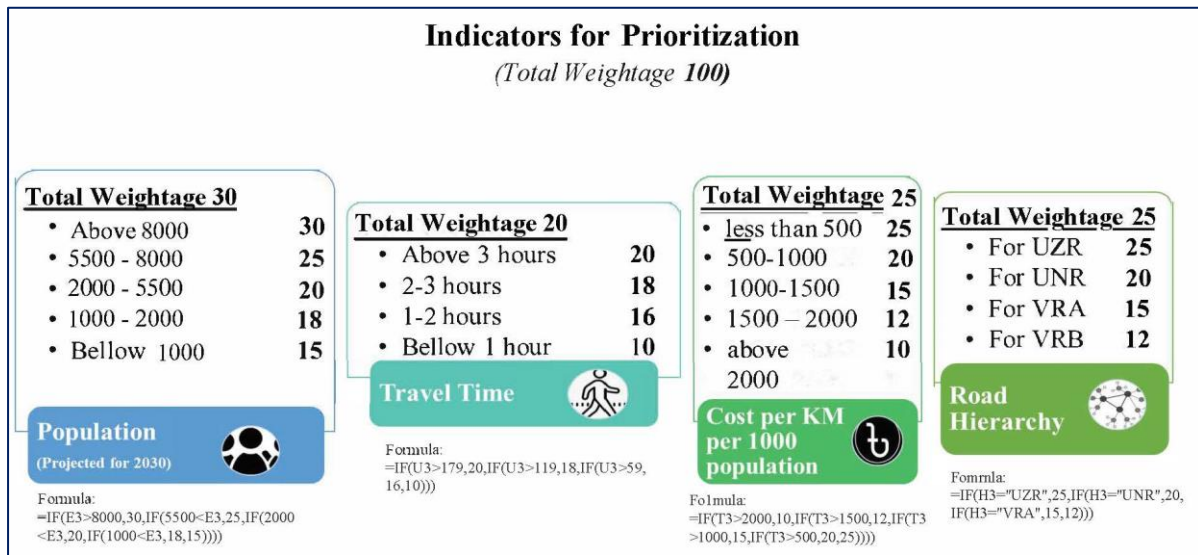


Figure 2: Prioritization indicators & their weightage values

3.6 MAPPING HARD-TO-REACH VILLAGES & POPULATION

- With the active support of LGED technical staff, first, draw every priority listed MVMT roads and Hard-to-reach villages on the LGED GIS map in presence of Union Chairman and members who knows the sub-project and area the best. This was not in scale but approximation was reached by triangulation. Then digitized on screen using GIS, and validate with Google map and checked with data and information on important features and points collected using GPS during field visits.
- There were challenges in deciding on starting node and/or zero chainage of the non-gazette (No ID) road, because not all non-gazette sub-projects were visited and surveyed by the Study team.

3.7 WRAP UP MEETING

Wrap up the field work progress at each District holding a meeting chaired by the Executive Engineer, LGED and participated by all Upazila engineers of the respective District. On completion of the fieldwork, this was conducted to share issues and updates to the District Executive Engineer for feedback and action, as necessary.

3.8 VALIDATION WORKSHOP

On completion of data analysis and drafting of the database and mapping, the Study outputs were shared with the respective Districts and Upazilas for final review. Later validation workshop was held at the respective District on the Draft Report to share and validate the findings. This was participated by the LGED Division, District and Upazila officials and technical staffs.

3.9 NATIONAL WORKSHOP

The Draft Report is finalized, incorporating comments received from the validation workshop, LGED head office staff and PMO office. A National Level workshop was held at LGED HQ for sharing and disseminating the results of the Study.

4 RURAL ROAD CONNECTIVITY TO THE VILLAGES

4.1 SUMMARY OF THE VILLAGE CONNECTIVITY

Mirzapur is a Beel Upazila. The rural road communication is quite poor here. Out of 220 villages, 114 are disconnected from the developed paved road network that brings huge sufferings for the people of those villages. The total rural road network of Mirzapur is 1014.47 km and out of which, 346.40 km paved and 668.07 km earthen.

Table 1: Total villages in the Unions and their connectivity

SL No	Union	No of Villages	Connected Villages	Hard-to-Reach Villages
1	Ajgana	10	7	3
2	Anaitara	25	8	17
3	Bahuria	18	4	14
4	Banail	24	15	9
5	Banshtail	16	8	8
6	Bhaora	10	7	3
7	Bhatgram	17	7	10
8	Fatehpur	12	5	7
9	Gorai	13	4	9
10	Jamurki	15	4	11
11	Latifpur	9	4	5
12	Mahera	17	12	5
13	Tarafpur	5	1	4
14	Uarsi	29	20	9
Total =		220	106	114

4.2 VILLAGES AND THEIR CONNECTIVITY – UNION LEVEL

The consultant arranged a meeting at Upazila conference room with and all the UP Chairmen & their secretaries. The team interviewed representative of each the Union and collected data about the HTRV.

Table 2: Union wise connected & Hard-to-Reach Villages and their population

Union	Sl. No	Connected Villages	Population 2021 (Based on BBS 2011)	Hard-to-Reach Villages	Population 2021 (Based on BBS 2011)
Ajgana (10)	1	Beltail	4292	Ajgana	5848
	2	Bhulua	111	Chiteshwari	9626
	3	Ghagrai	1766	Kuri Para (Kuratali)	4629
	4	Kuratali	2136		
	5	Majidpur	1613		
	6	Palashtali	1750		
	7	Telina	5982		
	Sub Total=			17650	

Union	Sl. No	Connected Villages	Population 2021 (Based on BBS 2011)	Hard-to-Reach Villages	Population 2021 (Based on BBS 2011)
Anaitara (25)	1	Bilsa	2049	Ag Chamari	1033
	2	Dhuparia	472	Aghaid	645
	3	Jagat Bharra	995	Anaitara	1618
	4	Kalamjani	627	Atghari	1082
	5	Lakshminda	571	Bade Bharra	337
	6	Panchdana	634	Banguri	825
	7	Sunditara	433	Chaubaria	841
	8	Teghari Bhatta	103	Daribahar	842
	9			Datpara	1087
	10			Fatehpur	4565
	11			Kanchanpara	684
	12			Khagutia	882
	13			Mahadinagar	2113
	14			Mamudpur	4190
	15			Masajan	1208
	16			Moshdui	392
	17			Sukta	1393
		Sub Total=	5884		23737
Bahuria (18)	1	Bil Gajaria	371	Amrail Teli Para	0
	2	Geramara	1463	Anilbari	1108
	3	Ghailbari	1616	Arai Para	1621
	4	Mandira Para	1043	Atharodana	571
	5			Bahuria	4222
	6			Bahuria Char Para	458
	7			Bara Gabra	1690
	8			Betrasin	1288
	9			Budir Para	1090
	10			Chandulia	3005
	11			Chhota Gabra	738
	12			Dighalia	1703
	13			Kehetora	913
	14			Keshabpur	634
		Sub Total=	4493		19041
Banail (24)	1	Bade Helalia	618	Bangalla	1409
	2	Banail	992	Bhushandi	1290
	3	Bhabkhanda	2383	Deora	2434
	4	Bharara	1223	Gramatia	1892
	5	Deojani	432	Halalia	478
	6	Durpasha	475	Kaoli Para	650
	7	Galli	1354	Nardana	1257
	8	Kazihara	948	Patuli	804

Union	Sl. No	Connected Villages	Population 2021 (Based on BBS 2011)	Hard-to-Reach Villages	Population 2021 (Based on BBS 2011)
	9	Kurali Para	758	Sailjana	458
	10	Majhalia	1510		
	11	Namdapur	1052		
	12	Pachh Chamari	699		
	13	Paik Para	1488		
	14	Panisail	1866		
	15	Teghari	349		
		Sub Total=	16147		10672
Banshtail (16)	1	Bankhuri	1005	Abhirampur	2011
	2	Banshinagar	5274	Khatiarhat	
	3	Bastail	4438	Amratal	1325
	4	Doranipara, Kaitala	1307	Banshtail	5102
	5	Garitakitala	827	Horitokichal	
	6	Naya Paraa	2133	Gayera Betil	10394
	7	Pekua	5127	Panchgaon	2482
	8	Telipara	1117	Tarafpur	787
			Sub Total=	21228	
Bhaora (10)	1	Chandpur	1047	Chamutia	765
	2	Garia	2808	Fatehpur	600
	3	Jalsuka	1169	Shashadhar Patti	1135
	4	Kamar Para	3336		
	5	Keshabpur Atharadana	0		
	6	Marisan	1209		
	7	Paikhar	1451		
			Sub Total=	11020	
Bhatgram (17)	1	Ashta Munsia	276	Bagjan	1465
	2	Barati	1146	Bhaora	528
	3	Barati (Baje Chuattar)	525	Burihati	2092
	4	Bhatgram	2658	Chuattar	879
	5	Dulla Begam	2546	Dulla Munsur	1177
	6	Gurial	3175	Ghugu	1782
	7	Sarotia	514	Ichail	3139
	8			Kuichtara	1495
	9			Ostomunsia	911
	10			Sinjuri	1132
			Sub Total=	10840	
Fatehpur (12)	1	Bainnatali	256	Bahantali	1225
	2	Fatehpur	4322	Chak Aleshwar	1220
	3	Gobindapur	284	Kurni	1964
	4	Hatkora	484	Musuriaghona	1464

Union	Sl. No	Connected Villages	Population 2021 (Based on BBS 2011)	Hard-to-Reach Villages	Population 2021 (Based on BBS 2011)
	5	Sutanari	1235	Pardighi	3161
	6			Subhulla	2257
	7			Thal Para	4224
	Sub Total=		6581		15515
Gorai (13)	1	Gorai	32041	Baimail	3263
	2	Kodalia	1359	Bhanuabaha	1575
	3	Path Hara	2439	Dherua	1019
	4	Rajabari	6554	Kadin Deohata	576
	5			Kalimajani	2940
	6			Mir Deohata	10108
	7			Rahimpur	1163
	8			Ranashal	1158
	9			Rashid Deohata	2140
	Sub Total=		42393		23942
Jamurki (15)	1	Baniara	1444	Ag Dhalla	2555
	2	Gunatia	3294	Banutia	3960
	3	Satiachara	2476	Chukuria	2340
	4	Ujanbari	411	Goran	1331
	5			Jamurki	6542
	6			Kadimkhalla	1577
	7			Karail	1829
	8			Karail	3293
	9			Kathora	1414
	10			Pakulla	7452
	11			Ufulkhi	3831
	Sub Total=		7625		36124
Latifpur (9)	1	Chandpur	1795	Bardam	1215
	2	Jogirkofa	1198	Bhulua	111
	3	Latifpur	5338	Gorakhi (Garaki)	2510
	4	Seharatail Bahail	879	Salimnagar	2792
	5			Takia Kadma	2336
	Sub Total=		9210		8964
Mahera (17)	1	Adabari	2627	Balatia	481
	2	Adabari	2476	Bhatukura	3111
	3	Ag Chhawali	2204	Goraki	1864
	4	Beobhog	912	Mahera	1846
	5	Doklahati	1286	Swalpa Mehera	1857
	6	Gabra	1452		
	7	Gangnahali	669		
	8	Harbhanga	1296		
	9	Hilra	2384		

Union	Sl. No	Connected Villages	Population 2021 (Based on BBS 2011)	Hard-to-Reach Villages	Population 2021 (Based on BBS 2011)
	10	Nagar Chhawali	3330		
	11	Teghri Keshab	561		
	12	Tentulia	1084		
	Sub Total=		20281		9159
Tarafpur (5)	1	Takiakadma	3409	Chhit Mohammadpur	3058
	2			Dauhatali	7292
	3			Gajeshwari	3577
	4			Tarappur	9211
	Sub Total=		3409		23138
Uarsi (29)	1	Andi Para	398	Ag Niljha	529
	2	Aruha	534	Banda Kaoaljani	1715
	3	Autpara	592	Baratia	1055
	4	Dakhili	497	Bardhan Para	865
	5	Dopatia	682	Deoli Para	1078
	6	Kanda Para	606	Halua Para	1355
	7	Karra	936	Mustafapur	1237
	8	Khail Sindur	1948	Safarta	1200
	9	Maishamura	1087	Shibpur Chandantara	527
	10	Masdai	1658		
	11	Nagar Bhadgram	1688		
	12	Nagar Para	794		
	13	Naogaon	1880		
	14	Naya Para	1029		
	15	Nutun Kalia	1096		
	16	old kahela	903		
	17	Pang Matang	1062		
	18	Saja Niljha	797		
	19	Uarsi	2242		
	20	Uttar Roail	1643		
Sub Total=		22072		9561	

4.3 MAP OF HARD-TO-REACH VILLAGES & PROPOSED ROADS

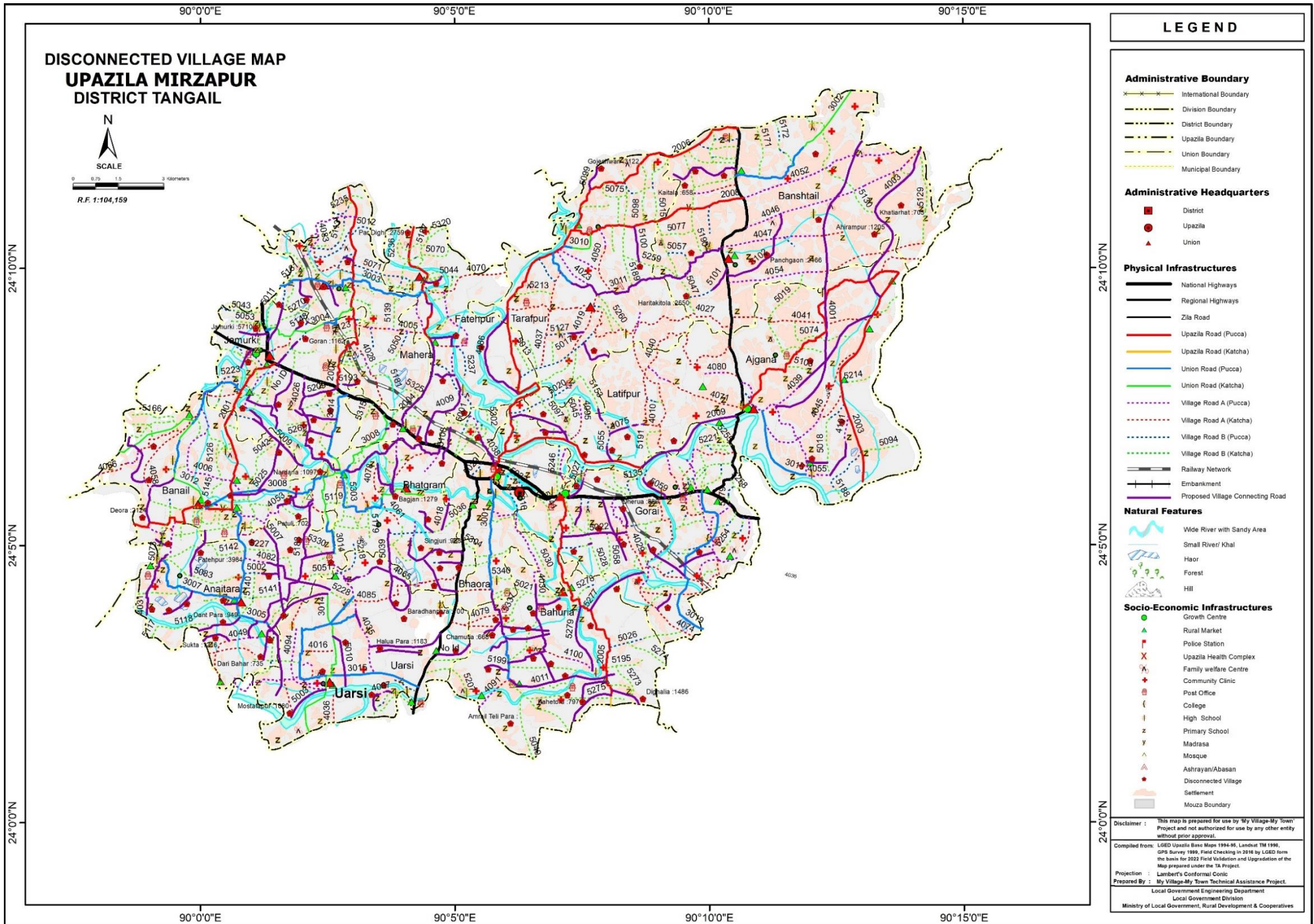


Figure 3: The Upazila Map

5 CONSULTATION MEETING & FIELD VISIT

5.1 UPAZILA LEVEL MEETING

The consultant arranged a meeting at Upazila conference room with the support of the UE office, Mirzapur that was participated by UNO, UE and all the UP Chairmen & their secretaries.



Figure 4: Upazila level Consultation Meeting

During the meeting, consultant team briefly discussed about the project and instructed the UP Chairmen and UE office for the database correction along with mapping procedure. The team worked on both the database and Upazila map and obtained the necessary outputs subsequently.

5.2 VISIT TO CASE STUDY UNION

The team visited ‘Warshi Union’, the case study Union in Mirzapur Upazila, through the alignment of “Nagarpara - Mostampur Road” having the Road ID: 393665003. The road was selected for the site visit considering the beneficiary population, educational institutes along the road and the recommendations of the UE Office as the road has a priority within the Union.

The consultant observed and collected necessary information for the study discussing inhabitants and UE office. Team recorded GPS data, interviewed road users and took photos of the alignment condition.



Figure 5: Condition of the visited road alignment at Case Study Union



Figure 6: Condition of the visited road alignment at Case Study Union

The length of this road is 2.06 km, totally earthen. The road connects a major village of the Union named Mustafapur having the total population of approx. 1300. People living here doesn't have any good road network with the Upazila HQ due to having unpaved road communication.

6 DATA COLLECTION & ANALYSIS

The consultant collected data from the field on hard to reach/ Hard-to-Reach Villages. Data were collected of those villages including population, road alignment information (*type, length, condition*), travel time, structure required on the alignment, potential riverine routes that can be used for multi-modal transport system etc. The data then analyzed, categorized and finally used to obtain a priority list along with a map (*Figure:3*) showing prioritized roads and Hard-to-Reach Villages. The proposed riverine & road connectivity by the UE office have been discussed in this section

6.1 PROPOSED RIVERINE ROUTES

Mirzapur Upazila is located within the *Brahmaputra River Basin* that has plenty of chars. As per actual field visit and data analysis, obtained from the UE office, Mirzapur; about 25-30% of the total area of Mirzapur are char, topographically low land in the dry season but submerged during monsoon. According to the UE, Mirzapur there exists only one riverine route that can be used around 4-5 months a year. Generally Small Boat, Engine Boat & Trawler are used to transport community & commodity.

The name of the riverine route & the associated stream with types of water vehicle are as follows;

Table 3: Proposed riverine routes of the Upazila

Sl. No	Name of the Riverine Route	Name of the Stream	Type of the Stream	Types of Water Vehicle	Need of excavation
1	Mirzapur GC (Tremohon Kheya Ghat) – ChakleshwarVill - Bardam Vill - Shewratoil Vill - Thalpara Vill - Fatepur Vill - Sutanari Vill - Rampur Vill- Tarafpur Vill - Pathorghata Village.	Bogshai River	Intermittent (Apr - Aug)	Small Boat, Engine Boat, Trawler (Carrying Aggregates)	Yes

6.2 PROPOSED ROADWAY FOR HARD-TO-REACH VILLAGES:

At present, roads are the most dominant mode of transportation. Most of the structures were built on the rivers to make the road communication effective. Yet, 3 (three) bridges are needed to fulfil the purpose.

Table 4: Summary of the rural roads in the Upazila

Total Road Length of the Upazila (KM)	Paved Length (KM)	Unpaved Length (KM)	Length of unpaved roads of Hard-to-Reach Villages (KM)
1014.47	346.40	668.07	212

6.2.1 PROPOSED ALL WEATHER ROUTES:

There are 103 all weather roads proposed to connect the HTRV within the Upazila. The road name, ID, road condition and the length of the unpaved roads are as bellow;

Table 5: Proposed all weather roads in the Upazila

Sl. No	Road Name	Road ID	Road Condition	Unpaved length (Km)
1	Kurni RHD - Kanchanpur GC Via Fatepur UPC Road.	393662004	All Weather	3.11
2	Mirzapur GC (Tre mohan Kheya ghat) - Hatubhanga GC Road via Latifpur UPC.	393662009	All Weather	2.76
3	Mirzapur Upazila HQ- Amrail Telipara Road via Kamarpara bazar road.	393663001	All Weather	1.95
4	Bashtail UPC - Tarafpur UPC road.	393663011	All Weather	4.76
5	Mazidpur - Gairabatil bazar Road.	393664001	All Weather	8.75
6	Rashid Deohata RHD (Gorai UPC) -- Bangshai River(Kodhalia Khayghat)Road.	393664002	All Weather	1.71
7	Auvirampur bazar -- Khatiarhat Road.	393664003	All Weather	6.95
8	Shatiachura RHD -- Chukuria Road.	393664004	All Weather	0.75
9	Warshi H/School-- Chandantara Road.	393664007	All Weather	6.58
10	Majalia Bazar -- Deora bazar (UZR) Road.	393664008	All Weather	5.09
11	Mushuria ghona RHD -- Chakaleshwer GPS Road.	393664009	All Weather	2.11
12	Kamarpara bazar-- Garamara bazar Road.	393664011	All Weather	4.81
13	Ichail RHD -- Bagjan Kheyaghat Road.	393664017	All Weather	1.28
14	Sreehoripara RHD -- Singjuri Bridge(UZR -2002) via Borihati GPS Road.	393664018	All Weather	1.55
15	Paharpur Bridge - Marishan Kamarpara GPS Road Via Shorhab Nagar GPS.	393664030	All Weather	2.95
16	Panch Chamari - Fatepur Chowbaria Road.	393664031	All Weather	3.27
17	Pathanpara UZR - Nagarpara Bazar Road via Dewlipara	393664035	All Weather	
18	Mirzapur RHD (Baipas) - Chakleshsar GPS Road.	393664038	All Weather	1.85

Sl. No	Road Name	Road ID	Road Condition	Unpaved length (Km)
19	Hatubhanga bazar - Telina bazar via Chiteswari road.	393664039	All Weather	3.89
20	Bhabkhando Bazar --- Bangalla Bazar Road.	393664053	All Weather	0.92
21	Ichail RHD - Barati Bazar Road.	393664056	All Weather	2.25
22	Mirzapur - Warshi road to Baishnabpara Via Kuistara shingjuri	393664060	All Weather	2.85
23	Atghori bazar - Khagotia Bazar via Lakshinda Road.	393664062	All Weather	4.1
24	Pakulla- Lawhati GC Road at Pakulla Gramin Tower to Banail UP Road Via Rishibari Ghat & Mazalia Bazar	393664075	All Weather	1
25	Pachdana bridge -- Nagar bhathgram Via Bharra(Lakshminda) Road.	393664082	All Weather	2.6
26	Bardam GPS -- Rampur Hat via Shehratoil GPS Road.	393664086	All Weather	3.45
27	Latifpur UPC - Uttar Kadma Bazar Via Goraki Madrasha Road	393664096	All Weather	3
28	Bagjan GPS - Saratia GPS Road	393664098	All Weather	2.1
29	Daruya Check post- Ranashal high school Road	393664099	All Weather	0.75
30	Ajgana Madrasha Bazar- Koripara Bazar Road.	393664101	All Weather	1.41
31	Panchadana -- Banguri Road.	393665002	All Weather	0.88
32	Nagarpara -- Mostamapur Road.	393665003	All Weather	2.06
33	Nagarbhatgram bazar-Khugutia bazar Road.	393665006	All Weather	2.89
34	Banail-Bharra Khagutia Road.	393665007	All Weather	3.6
35	Chukuria Sluice gate - Nardana sluice gate Road.	393665009	All Weather	4.11
36	Safarta river-Safarta Graveyard Road.	393665010	All Weather	0.76
37	Kawalipara-Namderpur Road.	393665014	All Weather	1.25
38	Baimail-Mir Deohata Road.	393665022	All Weather	0.68
39	Namderpur -- Halalia Road.	393665025	All Weather	2

Sl. No	Road Name	Road ID	Road Condition	Unpaved length (Km)
40	Rajabari-Kalimazani Road.	393665033	All Weather	2
41	Zamurki High school to Dobail road.	393665035	All Weather	1.5
42	Gogi Graveyard to Nilza GPS road Via Chowhattur Mosque.	393665049	All Weather	0.77
43	Salim Nagor Khyaghat to Uttar Salim Nogar Road	393665055	All Weather	1.1
44	Sohagpara R&H to Chanpur Khyaghat road	393665059	All Weather	1.05
45	Sholpa Mohera PTC to Mohera Rail Line road	393665063	All Weather	0.44
46	Katora Jam-E-Mosque to Chukuria Khyaghat road via Tukra para .	393665068	All Weather	2.5
47	Fatepur Shuvas,s house to Chamari Madrasha road	393665084	All Weather	1.5
48	Mamudpur Khyaghat to Datpara road	393665085	All Weather	3.08
49	Bhushundia Kalimondir-Bhurshundi Mosque via Mathorkhola .	393665087	All Weather	1.17
50	Bangalla Pukurpar-Graveyard via Patuli road	393665089	All Weather	1.36
51	Goraki Madrasha to Bandarmara road via Geraki	393665095	All Weather	2.25
52	Gajeshary Badsha Miah's house to Padda Mondal's house road	393665099	All Weather	0.63
53	Dohatoli Nayon Miah's house to Badar house	393665100	All Weather	1.16
54	Bastoil Bazar to Hortuki Chala Non Govt. Pry/School road	393665101	All Weather	1
55	Panchgouan Chairman's house to Noya para Ansar Miah's house road	393665102	All Weather	2.9
56	Gorail Train Line to Dulla Monsur Graveyard.	393665108	All Weather	1.45
57	Mohera Bank Office to Bill Mohera Jame Mosque road via Kadon Ali house	393665114	All Weather	0.82
58	Khagutia-Doribahar road	393665115	All Weather	0.97
59	Akh-Chamari Pry.School to Fatepur Hujur Ali house road	393665116	All Weather	1.09
60	Tarafpur-Takia Kadma Raods Kamal Miah's house to Joynuddin Hazi bari road	393665127	All Weather	0.95

Sl. No	Road Name	Road ID	Road Condition	Unpaved length (Km)
61	Bardam-Chitmamudpur Road Start from Koran ali's House to Takiakodma Hazi Mainuddin's House Road.	393665128	All Weather	2.73
62	Bhushundi Kalimondi-Gramatia H/School	393665147	All Weather	0.78
63	Kaitola Bajar to Doranipara H/School road via Amratoil	393665155	All Weather	4
64	Goraki Naabat Kha house to Fatepur Bazar road	393665160	All Weather	0.68
65	Mir Dewhata-Baimail Rd. Buri Bat Tree to Sukur Millik house rd	393665177	All Weather	0.36
66	Mohadinagar Sha-Para to Bangla road	393665183	All Weather	2.47
67	Dholla bridge to Deubog Bolotia GPS road	393665193	All Weather	0.85
68	Garamara bazer to shotagobra purbapara road	393665194	All Weather	0.92
69	Budirpara Mosque to River road	393665196	All Weather	0.7
70	Kamarpara Main road to Barro gobra road	393665199	All Weather	2.45
71	Kuripara-namapara Mosque to Kuripara Bazar Road	393665219	All Weather	0.6
72	Dhaka- Tangail RHD- Bridge - Baimail Road.	393665248	All Weather	
73	Pathahara - Batrashin Road.	393665250	All Weather	0.88
74	Vatkora Anishur Rahaman House - Vatkora Kalimondir Road.	393665264	All Weather	1.02
75	Degulia East Semana - Bora Gobra Weast Semana Road.	393665271	All Weather	1.8
76	Garamara Main Road - Kahetara Road.	393665275	All Weather	2.17
77	Gohail Bari Khay Ghat - Soharbnagar GPS Road	393665276	All Weather	2.1
78	Chandulia Bridge - Kolimajani Bari Bad Road.	393665277	All Weather	2.5
79	Bohuria Khaya Ghat - Anail Bari Road.	393665279	All Weather	1.32
80	Borihati High School - kanthalia Road.	393665300	All Weather	0.71
81	Kuraliypara Bazar - Sholjana Chairman bari Road.	393665306	All Weather	0.61

Sl. No	Road Name	Road ID	Road Condition	Unpaved length (Km)
82	Shovolla RHD - X Chairman Golam Mostofa House Road.	393665314	All Weather	0.4
83	Thalpara Bridge Dhakhain Par - Nirchonto pur Road.	393665318	All Weather	2.07
84	Korni RHD - H/O Md.Monsher Road Via H/O Jabed & Habo Road.	393665324	All Weather	1.05
85	Bohontoli Pucca Road - Bohontoli Molar par Road Via Bohontoli G P S.	393665326	All Weather	
86	Moshajan Madrasha -Dhatpara Khayaghat Road.	393665327	All Weather	1.31
87	Shokta Baza -Chorbilsha GPS Road.	393665328	All Weather	1.04
88	Mamudpur Pucca Road - H/o Anaitar Akbor Road.	393665332	All Weather	1.1
89	Fatepur (Bawra) Jamal House Front Side - H/O Paikhar Nurol Islam Via Fatepur Mosque Road.	393665345	All Weather	0.35
90	Chamutia Bridge To H/o Md.Rahim Road.	393665346	All Weather	0.75
91	Jamurki Gucchagram - H/O Rusha	No ID	All Weather	1
92	Pakulla Highway Salauddin Field - Tin rastar more Via H/O Ali Azgar	No ID	All Weather	2
93	Banua Bahar Pucca Road - Ranashal GPS	No ID	All Weather	4
94	Karail Mandir - Mandal Bari	No ID	All Weather	1.5
95	Khagutia - Moshdai	No ID	All Weather	1.5
96	Couhattor GPS - Koictara Via Ostromunsia	No ID	All Weather	2
97	Moshajon - Kanchanpara	No ID	All Weather	1
98	Barotia RHD - Chowhati Bangola Road	No ID	All Weather	1
99	Barotia GPS - Haloapara	No ID	All Weather	1
100	Kalmajani Pucca Road - Bhanuabaha	No ID	All Weather	1.5
101	Keshabpur H/O Banij - Bakuripara Via Atharodana	No ID	All Weather	2
102	Shatiachura Play Field - Uttarpara Mosque Via DA Tayeb House	No ID	All Weather	2
103	Bahuria Char para H/O Usman ali - Bahuria UP	No ID	All Weather	2

6.2.2 PROPOSED SUBMERSIBLE ROUTES:

There are 9 submersible roads proposed to connect the HTRV within the Upazila. The road name, ID, road condition and the length of the unpaved roads are as bellow;

Table 6: Proposed submersible roads in the Upazila

Sl. No	Road Name	Road ID	Road Condition	Unpaved length (Km)
1	Uttar roail - Haluapara Road.	393664015	Submersible	3.4
2	Asimtala RHD - Barati bazar Road.	393664026	Submersible	3.75
3	Nagarbathgram hat - suzanilza road Via Bandakawljani	393664065	Submersible	0.82
4	Baradhanpara-Khail Sindur Road.	393665023	Submersible	2.25
5	Gazi Lutfar Road.(Shatiachwra RHD Road-- Baniara Via Badhabhumi & graveyard)	393665024	Submersible	0.72
6	Bhatgram-Nilza Road.	393665039	Submersible	0.43
7	Ufulki Khelar mat to Dhalla road	393665092	Submersible	1.5
8	Jamurki UP to Karail Bordar Road	393665148	Submersible	0.97
9	Dhalla Bus-stand to Uzanbari Road	393665209	Submersible	1.85

6.2.3 PROPOSED ROADS FOR HARD-TO-REACH VILLAGES HAVING NO ID:

There are 13 roads proposed to connect the HTRV within the Upazila that have no ID yet. The road name, ID and the length of the unpaved part are as bellow;

Table 7: Proposed roads for Hard-to-Reach Villages having No ID

Sl. No	Road Name	Road ID	Unpaved length (Km)
1	Jamurki Gucchagram - H/O Rusha	No ID	1
2	Pakulla Highway Salauddin Field - Tin rastar more Via H/O Ali Azgar	No ID	2
3	Banua Bahar Pucca Road - Ranashal GPS	No ID	4
4	Karail Mandir - Mandal Bari	No ID	1.5
5	Khagutia - Moshdai	No ID	1.5
6	Couhattor GPS - Koictara Via Ostomunsia	No ID	2
7	Moshajon - Kanchanpara	No ID	1
8	Barotia RHD - Chowhati Bangola Road	No ID	1
9	Barotia GPS - Haloapara	No ID	1
10	Kalmajani Pucca Road - Bhanuabaha	No ID	1.5
11	Keshabpur H/O Banij - Bakuripara Via Atharodana	No ID	2

Sl. No	Road Name	Road ID	Unpaved length (Km)
12	Shatiachura Play Field - Uttarpara Mosque Via DA Tayeb House	No ID	2
13	Bahuria Char para H/O Usman ali -Bahuria UP	No ID	2

6.2.4 PRIORITY FOR ROAD DEVELOPMENT

Considering resources constraint, benefited group of people, time required to travel & road hierarchy, a priority list has been developed (*Annexure-2*) for the HTRV (Hard to Reach Villages). The priority score has been determined according to following

Table 8: Considered weightage values for the prioritization

Criteria	Weightage
Population	30
Travel Time	20
Cost per 1000 Population	25
Road Type	25
Total=	100

It has been observed that, there are a number of roads that bear same score. At these cases, the minimum budget required for providing connectivity to thousand people- will get more priority compared to more budget required roads. The roads bearing ID will have the higher priority than the roads without ID.

7 CONCLUSION & RECOMMENDATIONS

- Mirzapur Upazila is located within the *Brahmaputra River Basin* that has plenty of chars, topographically low land in the dry season but submerged during monsoon. The Upazila has enormous agricultural potential due to highly fertile soil gains from heavy sedimentation. There are 2 (two) major rivers that dominate the ecosystem and transport system of the Upazila, that are Bangshal & Louhajang rivers. Though the Upazila has a number of rivers, only one riverine rout can be used part of a year during monsoon. Small Boat, Engine Boat & Trawler are mainly used for transport community & commodity.
- The Upazila faces extensive flood during monsoon, rural roads and structures are highly vulnerable in this Upazila.
- The Upazila has a total number of 114 Hard-to-Reach Villages. To develop rural connectivity, there are proposals for both all weather & submersible roads. This report contains a list of roads with their priority. The priority has been determined based on Population, Travel Time, Cost per KM/1000 people & Road Hierarchy.
- This Upazila is highly vulnerable to flood. Due to climate change, the vulnerability is getting intense.
- Case by case design of roads in this Upazila considering different aspects such as exposure to flood, erosion etc. is highly recommended. A special study regarding the road and structure design of the Upazila Mirzapur in Tangail District is highly recommended.

ANNEXURE - 1

DETAILS OF GROWTH CENTER & HATBAZAR

Union	Market Name	Market Category (GC= Growth Center, HB= Hat Bazar)	Market Listed? (Yes/ No)	Market Category (General/ Special/ Collection center)	Market Category (Wholesale/ Retail/both)	Hat Day	Chandina Viti (Number)	Chandina Viti (Land)	Chandina Viti (Shop)	Land Area (Acre)			Lease/ Khas Collection BDT (2020)	Lease/ Khas Collection BDT (2019)
										Toha	Khas	Private		
Ajgana	Hatubhanga hat	GC	Yes	General Market	Both	2	134	0.67	134	2.73	5.60		1050000	1200100
Ajgana	Khatiar Hat	HB	Yes	General Market	Both	2			145	0.64	2.38		157500	155500
Ajgana	Bandhachala Hat	HB	Yes	General Market	Both	2			34				2100	550
Ajgana	Azgana Bazar	HB	Yes						29				750	1850
Ajgana	Kuripara Bazar	HB	Yes	General Market	Both	1			29	0.24	0.21	0.11	150	300
Ajgana	Latifpur Bazar	HB	No						15				0	0
Ajgana	Telina Bazar	HB	No						32				0	0
Anautara	Khagutia Hat	HB	Yes	General Market	Both	2	10	0.05	10	1.28	1.92		103200	55000
Anautara	Fatepur Hat	HB	Yes	General Market	Both	1			85	0.78	2.76	0.64	1800	15800
Anautara	Barinda Hat	HB	No						14				0	0
Anautara	Mahmudpur Hat	HB	Yes	General Market	Both	2	39	0.20	39	0.60	1.17	0.12	0	0
Bahuria	Haria Hat	HB	Yes	General Market	Both	1			16	0.60	0.60		2850	3450
Bahuria	Bohuria Hat	HB	No						19				0	0
Bahuria	Garamara Hat	HB	No						65				0	0
Bahuria	Kamarpara Hat	HB	No						13				0	0
Banail	Mazalia Hat	HB	Yes	General Market	Both	1	38	0.19	38	1.73	2.82		141000	137000
Banail	Kuralia Para Hat	HB	Yes	General Market	Both	1	1	0.01	11	1.45	2.18		340	300

Union	Market Name	Market Category (GC=Growth Center, HB=Hat Bazar)	Market Listed? (Yes/No)	Market Category (General/ Special/ Collection center)	Market Category (Wholesale/ Retail/both)	Hat Day	Chandina Viti (Number)	Chandina Viti (Land)	Chandina Viti (Shop)	Land Area (Acre)			Lease/ Khas Collection BDT (2020)	Lease/ Khas Collection BDT (2019)
										Toha	Khas	Private		
Banail	Babkhonda Bazar	HB	No						16				0	0
Banail	Galli Bazar	HB	No						14				0	0
Banshtail	Kaitala Hat	HB	Yes	Collection Center	Both	2			95	3.00	3.00		8250000	1015550 1
Banshtail	Bastail Hat	HB	Yes			2			125	0.57	0.12	0.93	166200	153000
Bhatgram	Boraty Bazar	HB	Yes	General Market	Both	1	42	0.21	42	1.60	3.51		70000	65700
Fatehpur	Fatepur Hat	HB	Yes	General Market	Both	1			136				107000	111000
Fatehpur	Adabari Hat	HB	No						12				0	0
Fatehpur	Korni Bazar	HB	No						36				0	0
Gorai	Deohata hat	GC	Yes	Collection Center	Both	2	10	0.05	170	0.44	6.92	0.68	2650005	2300000
Gorai	Shohag Pur Hat	HB	Yes	General Market	Both	2			75	1.10	1.34		85400	90000
Gorai	Gorai Hat	HB	No						66				0	0
Gorai	Rajabari Hat	HB	Yes	General Market	Both	1			42				0	0
Gorai	Hatu Banga Road Bazar	HB	No						55				0	0
Jamurki	Jamurki hat	GC	Yes	Collection Center	Both	1	4	0.02	155	1.52	0.60	2.00	400000	133000
Jamurki	Gonatia Bazar	HB	No						14				0	0
Jamurki	Pakolla Bazar	HB	No						68				0	0
Mahera	Shawali Bazar	HB	Yes	Collection Center	Both	1			122	4.64	0.76	4.64	6500	6500
Tarafpur	Pathorgata Hat	HB	Yes	General Market	Both	2	10	0.05	78	1.36	1.46	0.09	415300	411000
Uarsi	Bhadgram Hat	HB	No						19				0	0

Union	Market Name	Market Category (GC=Growth Center, HB=Hat Bazar)	Market Listed? (Yes/ No)	Market Category (General/ Special/ Collection center)	Market Category (Wholesale/ Retail/both)	Hat Day	Chandina Viti (Number)	Chandina Viti (Land)	Chandina Viti (Shop)	Land Area (Acre)			Lease/ Khas Collection BDT (2020)	Lease/ Khas Collection BDT (2019)
										Toha	Khas	Private		
Uarsi	Nagar Bhadgram Bazar	HB	No						15				0	0
Uarsi	Nagarpara Hat	HB	Yes	Collection Center	Both	1			45	1.25			0	0
Uarsi	Roail Hat	HB	No						11				0	0
Uarsi	Uarshi Hat	HB	No						12				0	0
	Mirzapur hat	GC	No	Special Market	Both	1			256	0.47	2.77		1400150	1212000
	Kotob Bazar	HB	No	Kotob Bazar										
	Shahapara Bazar	HB	No	Shahapara Bazar										

ANNEXURE - 2

PRIORITY LIST FOR ROAD DEVELOPMENT

Priority	Connecting Union	Connecting Village	Population 2021 (Based on BBS 2011)	Road Name	Road ID	Road Type	Road Type by Surface Condition	Total Road Length (10+11+12)	Paved length (km)	HBB Length (km)	Unpaved length (km)	HBB + Unpaved (11+12) in (km)	Approx. Cost of Road (lac)	Structure/ Gap (meter)	Cost of Structure (in Lac)	Total Cost (in lac) (Roads + Structures)	Population /KM (4-13)	Tentative Budget/1000 Population (in lac)	Travel Time (in min)	Weightage for Population	Weightage for Travel Time	Weightage for Cost per 1000 Population	Weightage for Road Type	Total Weightage (21+22+23+24)
1	2	3	4	5	6	7	8	9	10	11	12	13	14	15	16	17	18	19	20	21	22	23	24	25
1	Banshtail	Gayera Betil	10394	Mazidpur - Gairabatil bazar Road.	393664001	VRA	All Weather	8.75			8.75	8.75	1050		0	1050	1188	101	131	30	18	25	15	88
2	Ajgana	Chiteshwari	9626	Hatubhanga bazar - Telina bazar via Chiteswari road.	393664039	VRA	All Weather	5	1.11		3.89	3.89	466.8	50	450	916.8	2474	95	58	30	10	25	15	80
3	Fatehpur	Pardighi	3161	Kurni RHD - Kanchanpur GC Via Fatepur UPC Road.	393662004	UZR	All Weather	8.25	4.91	0.23	3.11	3.34	400.8	12	108	508.8	946	161	47	20	10	25	25	80
4	Gorai	Mir Deohata	10108	Mir Dewhata-Baimail Rd. Buri Bat Tree to Sukur Millik house rd	393665177	VRB	All Weather	1.36	1		0.36	0.36	43.2		0	43.2	28078	4	5	30	10	25	12	77
5	Tarafpur	Tarappur	9211	Tarafpur-Takia Kadma Raods Kamal Miah's house to Joynuddin Hazi bari road	393665127	VRB	All Weather	1.95		1	0.95	1.95	234		0	234	4723	25	14	30	10	25	12	77
6	Banail	Deora	2434	Majalia Bazar -- Deora bazar (UZR) Road.	393664008	VRA	All Weather	5.35	0.26		5.09	5.09	610.8		0	610.8	478	251	76	20	16	25	15	76
7	Banshtail	Abhirampur, Khatiarhat	2011	Auvirampur bazar -- Khatiarhat Road.	393664003	VRA	All Weather	6.95			6.95	6.95	834	15	135	969	289	482	104	20	16	25	15	76
8	Ajgana	Ajgana	5848	Ajgana Madrasha Bazar- Koripara Bazar Road.	393664101	VRA	All Weather	2.3	0.89		1.41	1.41	169.2	6	54	223.2	4147	38	21	25	10	25	15	75
9	Banshtail	Doranipara, Amratail, Kaitala	2636	Kaitola Bajar to Doranipara H/School road via Amratoil	393665155	VRB	All Weather	4			4	4	480		0	480	659	182	60	20	16	25	12	73
10	Tarafpur	Dauhatali	7292	Dohatoli Nayon Miah's house to Badar house	393665100	VRB	All Weather	1.16			1.16	1.16	139.2		0	139.2	6286	19	17	25	10	25	12	72
11	Banail	Nardana	1257	Chukuria Sluice gate - Nardana sluice gate Road.	393665009	VRB	All Weather	5.11	1		4.11	4.11	493.2	12	108	601.2	306	478	62	18	16	25	12	71
12	Banshtail	Tarafpur	787	Bashtail UPC - Tarafpur UPC road.	393663011	UNR	All Weather	5.8	1.04		4.76	4.76	571.2		0	571.2	165	726	71	15	16	20	20	71
13	Jamurki	Banutia	3960	Pakulla- Lawhati GC Road at Pakulla Gramin Tower to Banail UP Road Via Rishibari Ghat & Mazalia Bazar	393664075	VRA	All Weather	1			1	1	120		0	120	3960	30	15	20	10	25	15	70
14	Jamurki	Chukuria	2340	Shatiachura RHD -- Chukuria Road.	393664004	VRA	All Weather	1.75	1		0.75	0.75	90		0	90	3120	38	11	20	10	25	15	70
15	Bhatgram	Bagjan, Bhaora, Gughu	3782	Bagjan GPS - Saratia GPS Road	393664098	VRA	All Weather	2.1			2.1	2.1	252		0	252	1801	67	32	20	10	25	15	70
16	Latifpur	Goraki, Takia Kadma	5197	Latifpur UPC - Uttar Kadma Bazar Via Goraki Madrasha Road	393664096	VRA	All Weather	4	1		3	3	360		0	360	1732	69	45	20	10	25	15	70
17	Gorai	Rashid Deohata	2140	Rashid Deohata RHD (Gorai UPC) -- Bangshai River(Kodhalia Khayghat)Road.	393664002	VRA	All Weather	2.81	1.1		1.71	1.71	205.2		0	205.2	1252	96	26	20	10	25	15	70
18	Bhatgram	Ichail	3139	Ichail RHD - Barati Bazar Road.	393664056	VRA	All Weather	2.25			2.25	2.25	270	20	180	450	1395	143	34	20	10	25	15	70
19	Jamurki	Ufulkhi	3831	Asimtala RHD - Barati bazar Road.	393664026	VRA	Submersible	3.75			3.75	3.75	675		0	675	1022	176	56	20	10	25	15	70
20	Bhaora	Shashadhar Patti	1135	Kamarpara bazar-- Garamara bazar Road.	393664011	VRA	All Weather	4.81			4.81	4.81	577.2		0	577.2	236	508	72	18	16	20	15	69
21	Anaitara	Atghari	1082	Atghori bazar - Khagotia Bazar via Lakshinda Road.	393664062	VRA	All Weather	4.1			4.1	4.1	492	12	108	600	264	555	62	18	16	20	15	69
22	Banail	Bangalla	1409	Bhabkhando Bazar --- Bangalla Bazar Road.	393664053	VRA	All Weather	2.95	2.03		0.92	0.92	110.4		0	110.4	1532	78	14	18	10	25	15	68
23	Gorai	Dherua	1019	Daruya Check post- Ranashal high school Road	393664099	VRA	All Weather	1.35	0.6		0.75	0.75	90		0	90	1358	88	11	18	10	25	15	68
24	Bhatgram	Bagjan	1465	Ichail RHD -- Bagjan Kheyaghat Road.	393664017	VRA	All Weather	2.28	1		1.28	1.28	153.6		0	153.6	1145	105	19	18	10	25	15	68
25	Uarsi	Banda Kaoaljani	1715	Nagarbathgram hat - suzanilza road Via Bandakawljani	393664065	VRA	Submersible	1.48		0.66	0.82	1.48	266.4		0	266.4	1159	155	12	18	10	25	15	68
26	Bhatgram	Sinjuri	1132	Sreehoripara RHD -- Singjuri Bridge(UZR -2002) via Borihati GPS Road.	393664018	VRA	All Weather	2.05	0.5		1.55	1.55	186		0	186	730	164	23	18	10	25	15	68
27	Fatehpur	Musuriaghona	1464	Mushuria ghona RHD -- Chakalesher GPS Road.	393664009	VRA	All Weather	3.26	1.15		2.11	2.11	253.2		0	253.2	694	173	32	18	10	25	15	68
28	Bhatgram	Kuichtara	1495	Mirzapur - Warshi road to Baishnabpara Via Kuistara shingjuri	393664060	VRA	All Weather	3.8	0.95		2.85	2.85	342		0	342	525	229	43	18	10	25	15	68
29	Uarsi	Deoli Para	1078	Pathanpara UZR - Nagarpara Bazar Road via Dewlipara	393664035	VRA	All Weather	5.13	1.96	3.17		3.17	380.4		0	380.4	340	353	0	18	10	25	15	68
30	Bahuria	Arai Para	1621	Paharpur Bridge - Marishan Kamarpara GPS Road Via Shorhab Nagar GPS.	393664030	VRA	All Weather	6.87	1.22	2.7	2.95	5.65	678		0	678	287	418	44	18	10	25	15	68
31	Uarsi	Halua Para	1355	Uttar rail-- Haluapara Road.	393664015	VRA	Submersible	3.4			3.4	3.4	612		0	612	399	452	51	18	10	25	15	68
32	Latifpur	Bardam	1215	Bardam GPS -- Rampur Hat via Shehratoil GPS Road.	393664086	VRA	All Weather	3.45			3.45	3.45	414	15	135	549	352	452	52	18	10	25	15	68

*** Cost for Roads & Structures; (All Weather Rd= 120 lac/km, Submersible= 180 lac/km, Structure= 9 lac/m)

*** Weightage Values; (Population = 30, Travel Time= 20, Cost per1000 people= 25, Road Hierarchy= 25)

Priority	Connecting Union	Connecting Village	Population 2021 (Based on BBS 2011)	Road Name	Road ID	Road Type	Road Type by Surface Condition	Total Road Length (10+11+12)	Paved length (km)	HBB Length (km)	Unpaved length (km)	HBB + Unpaved (11+12) in (km)	Approx. Cost of Road (lac)	Structure/ Gap (meter)	Cost of Structure (in Lac)	Total Cost (in lac) (Roads + Structures)	Population /KM (4÷13)	Tentative Budget/1000 Population (in lac)	Travel Time (in min)	Weightage for Population	Weightage for Travel Time	Weightage for Cost per 1000 Population	Weightage for Road Type	Total Weightage (21+22+23+24)
1	2	3	4	5	6	7	8	9	10	11	12	13	14	15	16	17	18	19	20	21	22	23	24	25
33	Ajgana	Kuri Para (Kuratali)	4629	Kuripara-namapara Mosque to Kuripara Bazar Road	393665219	VRB	All Weather	0.6			0.6	0.6	72		0	72	7715	16	9	20	10	25	12	67
34	Tarafpur	Gajeshwari	3577	Gajeshary Badsha Miah's house to Padda Mondal's house road	393665099	VRB	All Weather	0.63			0.63	0.63	75.6		0	75.6	5678	21	9	20	10	25	12	67
35	Banshtail	Banshtail, Horitokichal	5102	Bastoil Bazar to Hortuki Chala Non Govt. Pry/School road	393665101	VRB	All Weather	2	1		1	1	120	4	36	156	5102	31	15	20	10	25	12	67
36	Anaitara	Mamudpur	4190	Mamudpur Pucca Road - H/o Anaitar Akbor Road.	393665332	VRB	All Weather	1.1			1.1	1.1	132		0	132	3809	32	17	20	10	25	12	67
37	Mahera	Bhatukura	3111	Vatkoran Anishur Rahaman House -Vatkoran Kalimondir Road.	393665264	VRB	All Weather	1.02			1.02	1.02	122.4		0	122.4	3050	39	15	20	10	25	12	67
38	Anaitara	Fotehpur	4565	Fatepur Shuvas,s house to Chamari Madrasha road	393665084	VRB	All Weather	1.5			1.5	1.5	180		0	180	3043	39	23	20	10	25	12	67
39	Fatehpur	Subhulla	2257	Shovolla RHD - X Chairman Golam Mostofa House Road.	393665314	VRB	All Weather	0.4			0.4	0.4	48	6	54	102	5643	45	6	20	10	25	12	67
40	Latifpur	Salimnagar	2792	Salim Nagor Khyaghat to Uttar Salim Nogor Road	393665055	VRB	All Weather	2.13	1.03		1.1	1.1	132		0	132	2538	47	17	20	10	25	12	67
41	Fatehpur	Thal Para	4224	Thalpara Bridge Dhakhain Par - Nirchonto pur Road.	393665318	VRB	All Weather	2.07			2.07	2.07	248.4		0	248.4	2041	59	31	20	10	25	12	67
42	Bhatgram	Burihati	2092	Borihati High School - kanthalia Road.	393665300	VRB	All Weather	0.71			0.71	0.71	85.2	9	81	166.2	2947	79	11	20	10	25	12	67
43	Gorai	Kalimajani	2940	Rajabari-Kalimazani Road.	393665033	VRB	All Weather	3	1		2	2	240	3	27	267	1470	91	30	20	10	25	12	67
44	Jamurki	Karail	3293	Katora Jam-E-Mosque to Chukuria Khyaghat road via Tukra para .	393665068	VRB	All Weather	2.5			2.5	2.5	300		0	300	1317	91	38	20	10	25	12	67
45	Bahuria	Chandulia	3005	Chandulia Bridge - Kolimajani Bari Bad Road.	393665277	VRB	All Weather	2.5			2.5	2.5	300		0	300	1202	100	38	20	10	25	12	67
46	Jamurki	Ag Dhalla	2555	Ufulki Khelar mat to Dhalla road	393665092	VRB	Submersible	1.5			1.5	1.5	270		0	270	1703	106	23	20	10	25	12	67
47	Tarafpur	Chhit Mohammadpur	3058	Bardam-Chitmamudpur Road Start from Koran ali's House to Takiakodma Hazi Mainuddin's House Road.	393665128	VRB	All Weather	2.73			2.73	2.73	327.6		0	327.6	1120	107	41	20	10	25	12	67
48	Gorai	Baimail	3263	Baimail-Mir Deohata Road.	393665022	VRB	All Weather	0.68			0.68	0.68	81.6	40	360	441.6	4799	135	10	20	10	25	12	67
49	Banshtail	Panchgaon	2482	Panchgouan Chairman's house to Noya para Ansar Miah's house road	393665102	VRB	All Weather	2.9			2.9	2.9	348		0	348	856	140	44	20	10	25	12	67
50	Anaitara	Mahadinagar	2113	Mohadinagar Sha-Para to Bangla road	393665183	VRB	All Weather	2.47			2.47	2.47	296.4		0	296.4	855	140	37	20	10	25	12	67
51	Latifpur	Gorakhi (Garaki)	2510	Goraki Madrasha to Bandarmara road via Geraki	393665095	VRB	All Weather	2.25			2.25	2.25	270	12	108	378	1116	151	34	20	10	25	12	67
52	Anaitara	Anaitara, Aghoi	2534	Banail-Bharra Khagutia Road.	393665007	VRB	All Weather	3.6			3.6	3.6	432		0	432	704	170	54	20	10	25	12	67
53	Bahuria	Bahuria	4222	Bohuria Khaya Ghat - Anail Bari Road.	393665279	VRB	All Weather	1.32			1.32	1.32	158.4	99	891	1049.4	3199	249	20	20	10	25	12	67
54	Mahera	Swalpa Mehera	1857	Sholpa Mohera PTC to Mohera Rail Line road	393665063	VRB	All Weather	0.44			0.44	0.44	52.8		0	52.8	4221	28	7	18	10	25	12	65
55	Fatehpur	Bahantali	1225	Bohontoli Pucca Road - Bohontoli Molar par Road Via Bohontoli G P S.	393665326	VRB	All Weather	0.37		0.37		0.37	44.4		0	44.4	3310	36	0	18	10	25	12	65
56	Mahera	Goraki	1864	Goraki Naabat Kha house to Fatepur Bazar road	393665160	VRB	All Weather	0.68			0.68	0.68	81.6		0	81.6	2741	44	10	18	10	25	12	65
57	Banail	Gramatia	1892	Bhushundi Kalimondi-Gramatia H/School	393665147	VRB	All Weather	0.78			0.78	0.78	93.6		0	93.6	2425	49	12	18	10	25	12	65
58	Bhatgram	Ghugu	1782	Gogi Graveyard to Nilza GPS road Via Chowhattur Mosque.	393665049	VRB	All Weather	2.4	1.63		0.77	0.77	92.4		0	92.4	2314	52	12	18	10	25	12	65
59	Mahera	Mahera	1846	Mohera Bank Office to Bill Mohera Jame Mosque road via Kadon Ali house	393665114	VRB	All Weather	0.82			0.82	0.82	98.4		0	98.4	2251	53	12	18	10	25	12	65
60	Bahuria	Budir Para	1090	Budirpara Mosque to River road	393665196	VRB	All Weather	0.7			0.7	0.7	84		0	84	1557	77	11	18	10	25	12	65
61	Jamurki	Karail	1829	Jamurki UP to Karail Bordar Road	393665148	VRB	Submersible	0.97			0.97	0.97	174.6		0	174.6	1885	95	15	18	10	25	12	65
62	Jamurki	2191	1795	Zamurki High school to Dobail road.	393665035	VRB	All Weather	1.5			1.5	1.5	180		0	180	1197	100	23	18	10	25	12	65
63	Gorai	Rahimpur	1163	Sohagpara R&H to Chanpur Khyaghat road	393665059	VRB	All Weather	1.55	0.5		1.05	1.05	126		0	126	1108	108	16	18	10	25	12	65
64	Banail	Bhushandi	1290	Bhushundia Kalimondir-Bhurshundi Mosque via Mathorkhola .	393665087	VRB	All Weather	1.17			1.17	1.17	140.4		0	140.4	1103	109	18	18	10	25	12	65
65	Bahuria	Betrasin	1288	Pathahara - Batrashin Road.	393665250	VRB	All Weather	0.88			0.88	0.88	105.6	4	36	141.6	1463	110	13	18	10	25	12	65
66	Anaitara	Sukta	1393	Shokta Baza -Chorbilsha GPS Road.	393665328	VRB	All Weather	1.04			1.04	1.04	124.8	4	36	160.8	1340	115	16	18	10	25	12	65
67	Fatehpur	Kurni	1964	Korni RHD - H/O Md.Monsher Road Via H/O Jabed & Habo Road.	393665324	VRB	All Weather	1.05			1.05	1.05	126	12	108	234	1870	119	16	18	10	25	12	65

*** Cost for Roads & Structures; (All Weather Rd= 120 lac/km, Submersible= 180 lac/km, Structure= 9 lac/m)
*** Weightage Values; (Population = 30, Travel Time= 20, Cost per1000 people= 25, Road Hierarchy= 25)

Priority	Connecting Union	Connecting Village	Population 2021 (Based on BBS 2011)	Road Name	Road ID	Road Type	Road Type by Surface Condition	Total Road Length (10+11+12)	Paved length (km)	HBB Length (km)	Unpaved length (km)	HBB + Unpaved (11+12) in (km)	Approx. Cost of Road (lac)	Structure/ Gap (meter)	Cost of Structure (in Lac)	Total Cost (in lac) (Roads + Structures)	Population /KM (4÷13)	Tentative Budget/1000 Population (in lac)	Travel Time (in min)	Weightage for Population	Weightage for Travel Time	Weightage for Cost per 1000 Population	Weightage for Road Type	Total Weightage (21+22+23+24)
1	2	3	4	5	6	7	8	9	10	11	12	13	14	15	16	17	18	19	20	21	22	23	24	25
68	Jamurki	Goran	1331	Gazi Lutfar Road.(Shatiachwra RHD Road-- Baniara Via Badhabhumi & graveyard)	393665024	VRB	Submersible	3.13	2.41		0.72	0.72	129.6	4	36	165.6	1849	124	11	18	10	25	12	65
69	Anaitara	Ag chamari	1033	Akh-Chamari Pry.School to Fatepur Hujur Ali house road	393665116	VRB	All Weather	1.09			1.09	1.09	130.8		0	130.8	948	127	16	18	10	25	12	65
70	Uarsi	Safarta	1200	Safarta river-Safarta Graveyard Road.	393665010	VRB	All Weather	0.76			0.76	0.76	91.2	9	81	172.2	1578	144	11	18	10	25	12	65
71	Bhatgram	Dulla Munsur	1177	Gorail Train Line to Dulla Monsur Graveyard.	393665108	VRB	All Weather	1.45			1.45	1.45	174		0	174	812	148	22	18	10	25	12	65
72	Bahuria	Dighalia	1703	Degulia East Semana - Bora Gobra Weast Semana Road.	393665271	VRB	All Weather	1.8			1.8	1.8	216	10	90	306	946	180	27	18	10	25	12	65
73	Bahuria	Bara Gabra	1690	Kamarpara Main road to Barro gobra road	393665199	VRB	All Weather	2.45			2.45	2.45	294	6	54	348	690	206	37	18	10	25	12	65
74	Bahuria	Anilbari	1108	Gohail Bari Khay Ghat - Soharbnagar GPS Road	393665276	VRB	All Weather	2.1			2.1	2.1	252		0	252	528	227	32	18	10	25	12	65
75	Jamurki	Kadim khalla	1577	Dhalla Bus-stand to Uzanbari Road	393665209	VRB	Submersible	2.15		0.3	1.85	2.15	387		0	387	733	245	28	18	10	25	12	65
76	Anaitara	Anaitara	1618	Nagarbhatgram bazar-Khugutia bazar Road.	393665006	VRB	All Weather	2.89			2.89	2.89	346.8	9	81	427.8	560	264	43	18	10	25	12	65
77	Anaitara	Chaubarua	841	Panch Chamari - Fatepur Chowbarua Road.	393664031	VRA	All Weather	4.99	1.72		3.27	3.27	392.4		0	392.4	257	467	49	15	10	25	15	65
78	Bahuria	Amrail Teli Para	408	Mirzapur Upazila HQ- Amrail Telipara Road via Kamarpara bazar road.	393663001	UNR	All Weather	10.82	8.87		1.95	1.95	234	10	90	324	209	794	29	15	10	20	20	65
79	Fatehpur	Chak Aleshwar	1220	Mirzapur RHD (Baipas) - Chakleshwar GPS Road.	393664038	VRA	All Weather	3.2	1.35		1.85	1.85	222	100	900	1122	660	919	28	18	10	20	15	63
80	Bhaora	Fatehpur	600	Fatepur (Bawra) Jamal House Front Side - H/O Paikhar Nurol Islam Via Fatepur Mosque Road.	393665345	VRB	All Weather	0.35			0.35	0.35	42		0	42	1715	70	5	15	10	25	12	62
81	Anaitara	Daribahar	842	Khagutia-Doribahar road	393665115	VRB	All Weather	0.97			0.97	0.97	116.4		0	116.4	868	138	15	15	10	25	12	62
82	Uarsi	Ag Niljha	529	Bhatgram-Nilza Road.	393665039	VRB	Submersible	0.43			0.43	0.43	77.4		0	77.4	1231	146	6	15	10	25	12	62
83	Gorai	Kadin Deohata	576	Dhaka- Tangail RHD- Bridge - Baimail Road.	393665248	VRB	All Weather	0.71		0.71		0.71	85.2		0	85.2	812	148	0	15	10	25	12	62
84	Bahuria	Chhota Gabra	738	Garamara bazer to shotagobra purbapara road	393665194	VRB	All Weather	0.92			0.92	0.92	110.4		0	110.4	802	150	14	15	10	25	12	62
85	Bhaora	Chamutia	765	Chamutia Bridge To H/o Md.Rahim Road.	393665346	VRB	All Weather	0.75			0.75	0.75	90	3	27	117	1020	153	11	15	10	25	12	62
86	Banail	Sailjana	458	Kuraliypara Bazar - Sholjana Chairman bari Road.	393665306	VRB	All Weather	0.61			0.61	0.61	73.2		0	73.2	751	160	9	15	10	25	12	62
87	Mahera	Balatia	481	Dholla bridge to Deubog Bolotia GPS road	393665193	VRB	All Weather	1.35	0.5		0.85	0.85	102		0	102	566	212	13	15	10	25	12	62
88	Banail	Kaoali Para	650	Kawalipara-Namderpur Road.	393665014	VRB	All Weather	1.25			1.25	1.25	150		0	150	520	231	19	15	10	25	12	62
89	Anaitara	Banguri	825	Panchadana -- Banguri Road.	393665002	VRB	All Weather	1.6	0.72		0.88	0.88	105.6	12	108	213.6	937	259	13	15	10	25	12	62
90	Bahuria	Kehetora	913	Garamara Main Road - Kahetara Road.	393665275	VRB	All Weather	2.17			2.17	2.17	260.4	10	90	350.4	421	384	33	15	10	25	12	62
91	Uarsi	Shibpur Chandantara	527	Warshi H/School-- Chandantara Road.	393664007	VRA	All Weather	7.72	1.14		6.58	6.58	789.6		0	789.6	80	1498	99	15	16	15	15	61
92	Anaitara	Masajan	1208	Moshajan Madrasha -Dhatpara Khayaghat Road.	393665327	VRB	All Weather	1.31			1.31	1.31	157.2	99	891	1048.2	922	868	20	18	10	20	12	60
93	Anaitara	Datpara	1087	Mamudpur Khyaghat to Datpara road	393665085	VRB	All Weather	3.08			3.08	3.08	369.6	75	675	1044.6	353	961	46	18	10	20	12	60
94	Latifpur	Bhulua	111	Mirzapur GC (Tre mohan Kheya ghat) - Hatubhanga GC Road via Latifpur UPC.	393662009	UZR	All Weather	8.95	6.19		2.76	2.76	331.2	92	828	1159.2	40	10430	41	15	10	10	25	60
95	Uarsi	Baradhanpara	802	Baradhanpara-Khail Sindur Road.	393665023	VRB	Submersible	2.25			2.25	2.25	405		0	405	356	505	34	15	10	20	12	57
96	Banail	Patuli	804	Bangalla Pukurpar-Graveyard via Patuli road	393665089	VRB	All Weather	1.36			1.36	1.36	163.2	30	270	433.2	591	539	20	15	10	20	12	57
97	Anaitara	Bade Bharra	337	Pachdana bridge -- Nagar bhathgram Via Bharra(Lakshmanda) Road.	393664082	VRA	All Weather	3.6	1		2.6	2.6	312	8	72	384	130	1140	39	15	10	15	15	55
98	Uarsi	Mustafapur	1237	Nagarpara -- Mostamapur Road.	393665003	VRB	All Weather	2.06			2.06	2.06	247.2	160	1440	1687.2	601	1363	31	18	10	15	12	55
99	Banail	Halalia	478	Namderpur -- Halalia Road.	393665025	VRB	All Weather	2			2	2	240	45	405	645	239	1350	30	15	10	15	12	52
100	Jamurki	Jamurki Gucchagram	6542	Jamurki Gucchagram - H/O Rusha	No ID	VRB	All Weather	1			1	1	120	10	90	210	6542	32	15	25	10	25	12	72
101	Jamurki	Pakulla	7452	Pakulla Highway Salauddin Field - Tin ratar more Via H/O Ali Azgar	No ID	VRB	All Weather	2			2	2	240	10	90	330	3726	44	30	25	10	25	12	72
102	Gorai	Ranashal	1158	Banua Bahar Puca Road - Ranashal GPS	No ID	VRB	All Weather	4			4	4	480		0	480	290	414	60	18	16	25	12	71

*** Cost for Roads & Structures; (All Weather Rd= 120 lac/km, Submersible= 180 lac/km, Structure= 9 lac/m)
*** Weightage Values; (Population = 30, Travel Time= 20, Cost per1000 people= 25, Road Hierarchy= 25)

1	2	3	4	5	6	7	8	9	10	11	12	13	14	15	16	17	18	19	20	21	22	23	24	25
Priority	Connecting Union	Connecting Village	Population 2021 (Based on BBS 2011)	Road Name	Road ID	Road Type	Road Type by Surface Condition	Total Road Length (10+11+12)	Paved length (km)	HBB Length (km)	Unpaved length (km)	HBB + Unpaved (11+12) in (km)	Approx. Cost of Road (lac)	Structure/ Gap (meter)	Cost of Structure (in Lac)	Total Cost (in lac) (Roads + Structures)	Population /KM (4÷13)	Tentative Budget/1000 Population (in lac)	Travel Time (in min)	Weightage for Population	Weightage for Travel Time	Weightage for Cost per 1000 Population	Weightage for Road Type	Total Weightage (21+22+23+24)
103	Jamurki	Karail	3293	Karail Mandir - Mandal Bari	No ID	VRB	All Weather	1.5			1.5	1.5	180		0	180	2195	55	23	20	10	25	12	67
104	Bhatgram	Chuhattor, Ostromunsia, Kuichtara	3291	Couhattor GPS - Koictara Via Ostromunsia	No ID	VRB	All Weather	2			2	2	240	6	54	294	1645	89	30	20	10	25	12	67
105	Anaitara	Khagutia, Daribahar, Moshdui	2120	Khagutia - Moshdai	No ID	VRB	All Weather	1.5			1.5	1.5	180	10	90	270	1413	127	23	20	10	25	12	67
106	Anaitara	Masajan, Kanchanpara	1895	Moshajon - Kanchanpara	No ID	VRB	All Weather	1			1	1	120		0	120	1895	63	15	18	10	25	12	65
107	Gorai	Bhanuabaha	1575	Kalmajani Pucca Road - Bhanuabaha	No ID	VRB	All Weather	1.5			1.5	1.5	180	4	36	216	1050	137	23	18	10	25	12	65
108	Uarsi	Baratia	1055	Barotia RHD - Chowhati Bangola Road	No ID	VRB	All Weather	1			1	1	120	4	36	156	1055	148	15	18	10	25	12	65
109	Jamurki	Kathora	1414	Shatiachura Play Field - Uttarpara Mosque Via DA Tayeb House	No ID	VRB	All Weather	2.3	0.3		2	2	240		0	240	707	170	30	18	10	25	12	65
110	Uarsi	Baratia	1055	Barotia GPS - Haloapara	No ID	VRB	All Weather	1			1	1	120	8	72	192	1055	182	15	18	10	25	12	65
111	Bahuria	Atharodana, Keshobpur	1206	Keshabpur H/O Banij - Bakuripara Via Atharodana	No ID	VRB	All Weather	2			2	2	240		0	240	603	199	30	18	10	25	12	65
112	Bahuria	Bahuria Charpara	458	Bahuria Char para H/O Usman ali -Bahuria UP	No ID	VRB	All Weather	2			2	2	240		0	240	229	524	30	15	10	20	12	57