



GOVERNMENT OF THE PEOPLE'S REPUBLIC OF BANGLADESH  
MINISTRY OF LOCAL GOVERNMENT, RURAL DEVELOPMENT AND CO-OPERATIVES  
**Local Government Engineering Department (LGED)**  
Agargaon, Sher-E-Bangla Nagar, Dhaka-1207

**Final Report on Study-03**  
**‘My Village -My Town’ Technical Assistance Project**  
“Feasibility Study for Rural Connectivity including Multi-Modal Transport  
System in Char and Haor Areas”  
**Kamalganj Upazila, MoulviBazar**



---

March, 2023

**Kamalganj Upazila, MoulviBazar**

# CONTENTS

---

<b>GLOSSARY</b> .....	<b>i</b>
<b>ABBREVIATIONS</b> .....	<b>ii</b>
<b>Background</b> .....	<b>iii</b>
<b>1 Description of the Upazila</b> .....	<b>1</b>
1.1 Geography and Demography .....	1
1.2 Education Features.....	1
1.3 Rural Road Communications.....	1
1.4 Agriculture, Food Production, and Fisheries .....	1
1.5 Growth Centre and Hatbazar.....	1
<b>2 Location of the Upazila</b> .....	<b>2</b>
<b>3 Approach &amp; Methodology</b> .....	<b>3</b>
2.1 Study Team Composition.....	3
2.2 Study Area.....	3
2.3 Database Review and Analysis .....	3
2.4 Prioritization Criteria of Sub-projects .....	4
2.5 Weightage Distribution for Prioritization.....	4
2.6 Mapping Hard-to-reach Villages & Population.....	5
2.7 Wrap Up Meeting.....	5
2.8 Validation Workshop.....	5
2.9 National Workshop.....	6
<b>4 Description of Wetlands</b> .....	<b>7</b>
3.1 Distribution of the Haors/ Wetlands.....	7
3.2 Haor/ Wetland Category.....	8
3.3 Bio-Ecological Characteristics .....	9
<b>5 Rural Road Connectivity to the Villages</b> .....	<b>10</b>
4.1 Summary of the Village Connectivity.....	10
4.2 Map of Hard-to-Reach Villages & Proposed Roads.....	11
<b>6 Data Collection &amp; Analysis</b> .....	<b>12</b>
5.1 Proposed Roadway for Hard-to-Reach Villages:.....	12
5.1.1 Proposed All-Weather Routes:.....	12
5.1.2 Priority for Road Development .....	13
<b>7 Conclusion &amp; Recommendations</b> .....	<b>14</b>
<b>Annexure - 1</b> .....	<b>15</b>
<b>Annexure - 2</b> .....	<b>17</b>

### ***List of Figures***

Figure 1: Upazila Location Map .....	2
Figure 2: Prioritization indicators & their weightage values .....	5
Figure 3: Haor Distribution Map .....	7
Figure 4: Haor Category Map. ....	8
Figure 5: Bio Ecological Characteristics Map.....	9
Figure 5: Bio Ecological Characteristics Map.....	9
Figure 6: Upazila Map .....	11

### ***List of Tables***

Table 1: Total villages in the unions and their connectivity.....	10
Table 2: Summary of the rural roads in the Upazila.....	12
Table 3: Proposed all-weather roads in the Upazila .....	12
Table 4: Considered weightage values for the prioritization.....	13

## GLOSSARY

---

**Hard-to-reach Villages** mean in the Study those villages that are not connected by any paved road with the respective Upazila HQ and/or Union Parishad, and to the nearest economic activity hub and social service centres. The following explanations are important for the concept of hard-to-reach villages.

- In haor areas, Villages connected with submersible roads dry season and connected with Riverine/haor routes in the monsoon season have been considered accessible and excluded from hard-to-reach villages.
- Within Upazila, Villages that need a bridge to connect have not been considered hard-to-reach villages.
- In the case of island Upazilas, villages that are accessible with paved roads from Upazila HQ have been considered accessible and excluded from hard-to-reach villages.
- In the case of villages that are connected with HBB (Herring-Bone-Bond) or Brick flat soling routes have been considered hard-to-reach villages

**Mauza** Mauza is normally the geographical expression of a unit of landmass for revenue settlement and revenue collection, whereas, the village is a human settlement within a Mauza with a strong social bond. Within a Mauza there could be more than one village.

**Union** Bangladesh has 3-tiers local government systems: District, Upazila, and Union. Union is the lowest level of local government below Upazila Parishad

**Upazila** Sub-district; the third level of government administration below division and district.

**Hat** Synonym of Bazar or market

**Walking Trail** means in the Study the village pathway or access used for walking by commuters, in most cases does not have gazetted or established or commonly used alignment, and to the most, passable by bicycle or motorbike. These village trails are not passable by motorized jeeps or mini trucks or emergency service vehicles or not even any three-wheelers.

**Unpaved Roads** have no pavement or surface material. They are usually earthen roads.

**Vulnerability** is the human dimension of risk that is defined as conditions determined by physical, social, economic, environmental, political, cultural, and institutional factors or processes that increase the likelihood of an individual or a community to the impacts of shocks and hazards.

**Climate-Resilience** is expressed as the ability of a community to resist, absorb, adapt to and recover better from the impacts of disasters like floods and landslides in a sustainable way.



## ABBREVIATIONS

---

ADB	– Asian Development Bank
BBS	– Bangladesh Bureau of Statistics
BC	– Bitumen Carpeting
DatEx	– Data Expert (Pvt.) Limited
DECL	– Delight Engineers and Construction Ltd.
DoE	– Department of Environment
DPHE	– Department of Public Health Engineering
DPP	– Development Project Proposal
FGD	– Focus Group Discussion
GIS	– Geographic Information System
GOB	– Government of Bangladesh
HBB	– Herring-Bone-Bond
HQ	– Headquarter
HTRV	– Hard-to-Reach Village
JV	– Joint Venture
KII	– Key Informant Interview
LGD	– Local Government Division
LGED	– Local Government Engineering Department
LGI	– Local Government Institute
MVMT	– My Village My Town
NGO	– Non-Government Organization
PD	– Project Director
PMO	– Project Management Office
RCC	– Reinforced Concrete
RHD	– Roads & Highways Department
SDGs	– Sustainable Development Goals
TA	– Technical Assistance Project
UE	– Upazila Engineer
UNDP	– United Nations Development Programme
UNO	– Upazila Nirbahi Officer
UNR	– Union Road
UP	– Union Parishad
UPZ	– Upazila Road
VRA	– Village Road A
VRB	– Village Road B





## BACKGROUND

---

### Context of the Project

The Government of Bangladesh made massive plans to ensure equitable development around the country. Under this development philosophy, the GoB requirements are to reduce the rural-urban divide to foster developmental benefits for all citizens. As part of this, the government declared an election manifesto on the eve of the national parliament election 2018 uniting the theme **Bangladesh on the March Towards Prosperity** aiming at transforming Bangladesh into a developed nation by 2041. Under this, villages have been considered the basic unit of prosperity for building a developed nation.

This firm commitment was declared following the light of the philosophy of the Father of the Nation Bangabandhu Sheikh Mujibur Rahman to build ‘Sonar Bangla’ (Golden Bangla) through inclusiveness, balanced, and development for all.

Following the philosophy of the Father of the Nation, the government declared its election manifesto 2018 titled ‘My Village-My Town’- Extension of Modern Civic Amenities in Every village. The Local Government Division under the Ministry of Local Government, Rural Development and Cooperatives has prepared a comprehensive work plan to make this election commitment a reality. The Local Government Division with its two agencies, the Local Government Engineering Department (LGED) and Department of Public Health Engineering (DPHE) has undertaken a technical assistance project named ‘My Village-My Town’- Technical Assistance Project. Under this project, 36 studies and 30 guidelines are being developed on eight thematic components related to the mandate of the Local Government Division. The eight thematic components are Rural Communications, Growth Centre and Hat Bazar, Rural Water Supply and Sanitation, Rural Waste Management, Community Space and Recreation Facilities, Upazila Masterplan, Rural Housing and Capacity building of Upazila and Union Parishad. Besides this, a coordination framework is being developed among the other ministries involved in the implementation of the My Village-My Town election manifesto. It is notable to mention that a coordination committee has been formed comprising 21 ministries to implement the program in a coordinated way under the leadership of the Minister of Local Government, Rural Development, and Co-operatives.

### Context of the Report

This report is a part of the study of the component ‘Rural Connectivity’. Rural connectivity is the basic of all amenities in the villages. Rural connectivity works as the conduit that can supply a number of bare necessities such as access to the market, health, education, employment etc. In general, Bangladesh has remarkable progress in rural connectivity. Instead of this, a number of regions of the country are geographically sensitive where rural connectivity is not easy and has a lot of challenges. These regions are -Haor, Beel, Hills, Chars, islands etc. The people residing in these regions have considerably low access to civic amenities compared to other villages of the country. Therefore, the study and plan development of improvement of rural connectivity is one of the important assignments of the technical assistance project. The project undertook an Upazila-based special study on the villages of these geographically sensitive regions that are mentioned before.

This report contains the rural connectivity status and priority plan of the **Kamalganj** Upazila of **Moulvibazar** District.



# 1 DESCRIPTION OF THE UPAZILA

---

## 1.1 GEOGRAPHY AND DEMOGRAPHY

The geographical area of Kamalganj Upazila is 485.26 square kilometers and has 9 unions, 116 mauzas, and 253 villages. The Upazila is 23km away from the district headquarters of Moulvibazar. Kamalganj is covered by no major haors/ wetlands and there exist only Dholai river flowing over the Upazila. The total population of Upazila is 259130 of which 127746 are male and 131384 females, the total number of households are 51895 and the average household size is 4.99 with a population density of 534 (as per population census 2011).

## 1.2 EDUCATION FEATURES

According to the information of the relevant local government offices, there are 87 government & 94 non-government primary schools in the Upazila. On the other hand, Kamalganj has 32 non-government with only government high schools, 34 School & Colleges, 3 private colleges, and 6 madrasahs. The literacy rate for the Upazila is 48.6% as per BBS 2011.

## 1.3 RURAL ROAD COMMUNICATIONS

Bangladesh scored in the rural accessibility index at around 87 percent among South Asian and some other African countries. Generally, the people of Bangladesh get all-weather within 2 kilometers adjacent to their living places. But the feature of rural road communications in Kamalganj Upazila is contrasted. There are many villages disconnected from the paved road network that brings huge suffering for the people of the villages. The total rural road network of Kamalganj is 622.2 km and out of which, 304.86 km are paved and 317.34 km earthen.

## 1.4 AGRICULTURE, FOOD PRODUCTION, AND FISHERIES

Though the aggregate (coarse sand, stone chips & stone) business is the main source of income for the inhabitants, agriculture too has major importance for the economy of the people of Kamalganj. There are 36352 acres of arable land in Upazila. In the fiscal year 2010-11, the Rice production was 24150, 46063 & 11496 metric tons for Aus, Aman & Boro seasons respectively. The Upazila also produced 22 metric tons of Wheat, 8332 metric tons of Potato, and 101 metric tons of Oil seed in the same fiscal year 2010-11. A notable quantity of vegetables is also produced here in this Upazila.

According to the BBS (2011) data, Kamalganj has 4624 Acre of haor, pond & dighee that produced 3500 metric tons of fish.

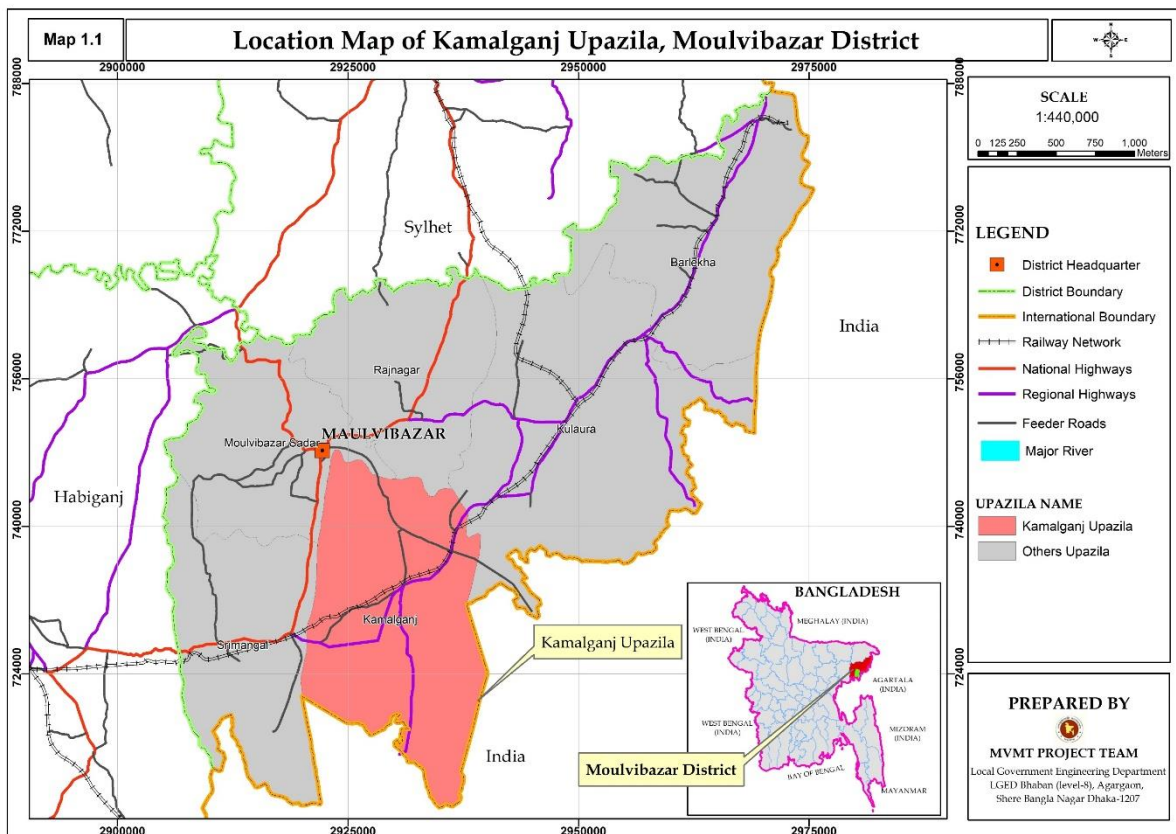
All the agricultural products are adequate to meet the demand of the Upazila and surpluses are sold outside of Kamalganj.

## 1.5 GROWTH CENTRE AND HATBAZAR

Growth Centre and Rural Hatbazar are one of the main centers of the rural economy. Hatbazar is like the heart of the development of the rural economy. Rural Hatbazar plays a role in increasing production and creating employment impacting the supply chain of agriculture and non-agriculture products. There are 19 Hatbazar and 6 growth centers in Upazila. The structural development of Hatbazar and its growth is pivotal to boosting the rural economy. Details of the growth center & hatbazar of the Upazila have been attached in [Annexure-1](#).

## 2 LOCATION OF THE UPAZILA

Kamalganj Upazila of Moulvibazar district in the North-Eastern part of the country. The location has been shown on the map. The Upazila is situated at the foothill of the Indian border and causes flash floods during monsoon coming from uphill Meghalaya where is Cherrapunji, the wettest place on earth, resulting in waterlogging within the haor basin. Flash floods induce severe impacts on both the built and the natural environment. The effects of flash floods can be catastrophic and show extensive diversity, ranging from damages to buildings and infrastructure to impacts on vegetation, human lives, and livestock.



*Figure 1: Upazila Location Map*

### 3 APPROACH & METHODOLOGY

---

#### 2.1 STUDY TEAM COMPOSITION

A team consisting of Senior Rural Road Infrastructure Specialist, Associate Rural Infrastructure Specialist, and Assistant Engineer engaged by the Project Management Office (PMO) conducted the study. On the other hand, A team consisting of Deputy Team Leader cum Rural Infrastructure Engineer, Junior GIS expert, and Junior Engineer engaged by consulting firm (datEx & DECL JV) conducted the study. A participatory approach to review the database and identify priority transport infrastructure needs (‘sub-projects’) was instrumental. At the stakeholder consultation meeting held in each district, the database was reviewed, and priority needs were identified and mapped working together with the LGI representatives and LGED technical team. LGED and LGI representatives surveyed each Upazila for the collection of detailed observations and validations of the proposed priority needs.

#### **Stakeholder Consultation Meeting**

- Hard-to-reach Village Database and database of sub-projects reviewed
- Prioritization of sub-projects for each Upazila with LGI and LGED representatives
- Hard-to-reach villages and priority sub-projects mapped in the LGED GIS Map

#### 2.2 STUDY AREA

The study was conducted in 72 Upazilas of haor areas, 3 Upazilas of Beel areas, 8 Upazilas of Char areas, and 4 Upazilas of Island areas during the period from December 2021 to June 2022. Apart from this, the PMO team conducted the study in 50 Upazilas of Haor areas, and the rest of the Upazilas of Haor, Beel, Char, and Island areas are conducted by the consulting firm team. The Upazila technical staff of LGED supported in organizing stakeholder consultation meetings and in database review and mapping the Hard-to-reach villages and population during this study period. They also supported the field work and authentication check by visits to the sub-projects in their respective Upazila and looking at the feasibility of some proposed sub-projects from technical, social, and environmental perspectives.

#### 2.3 DATABASE REVIEW AND ANALYSIS

The study applied both qualitative (e.g., focused group discussions and in-depth case study fieldwork) and quantitative (structured and semi-structured interviews) approaches and methods in reviewing and conducting fieldwork in all the haor areas to understand the need and impact of rural accessibility in remote village contexts. The most applied methods in the reviewing and conducting fieldwork were:

- Key Informants Interview (KII)
- Focus Group Discussion (FGD)
- Case Study for authentication check and individual sub-project feasibility study.

- ❖ Review the Hard-to-reach village database at the ‘Stakeholder consultation meeting’ participated by local government representatives such as the UP chairman and members, Upazila chairman, vice-chairman, and UNO.
- ❖ FGD and KII were conducted using a checklist. Composition in the FGD included local community people: male and female, teachers, local farmers, traders, and students depending on availability.
- ❖ KIIs of Union Chairman, Upazila chairman, UNO male and female, and teacher depending on availability.
- ❖ Authentication and feasibility check by visits to the sub-projects reviewed and listed for the 40 selected case study unions under the MVMT project.
- ❖ Survey with GPS machine and Google apps in collecting Hard-to-reach village locations, landmarks, chainage at gaps, village road at sections vulnerable to land erosion damage, narrow existing width or sharp slope location.

## 2.4 PRIORITIZATION CRITERIA OF SUB-PROJECTS

Prepare a priority list of sub-projects by Upazilas that includes gazette ID roads and non-gazette roads (No ID) with attributes like name and number of villages and population. The criteria used in the prioritization are described below.

- Population, travel time needed from the remotest villages to the Upazila HQ, road type, and cost per km per 1000 population are the indicators weighted giving a value in a formula.
- Priority is given to single connection with no alternative transport road and multi-modal transport route to connecting the villages with Upazila HQ and Union Parishad, growth centre and important markets and social service centres; villages with a higher population and travel time get higher weightage;
- Priority is given to roads, ghats, and collection points that will facilitate agricultural diversification, reduce transportation costs, ensure a fair price and create a farm and non-farm employment and income;
- Priority is given to roads development and inland waterways dredging that will enable year-round mobility of the general public and villagers, in particular, health workers, teachers and students, and tourists to facilitate tourism development, quality education, and better health service in the district and region;
- Special priority is given to sub-projects of roads, Riverine routes/inland waterways that will mainstream deprived communities living in the hard-to-reach villages;
- Identified sub-projects with more cost-effectiveness than others using per km per 1000 population cost for each sub-project;
- Every sub-project(s) is to be climate-resilient, sustainable, and cost-effective.

## 2.5 WEIGHTAGE DISTRIBUTION FOR PRIORITIZATION

The approaches and methodologies of the Study for reviewing database and prioritization are synthesized in the diagrams below, noting that the proposed sub-projects of roads in the databases are prioritized based on weightage calculated on the set criteria (as shown in the diagram). People’s demands and local needs are reflected in the prioritization which was

determined by the Study, working together with LGI representatives and LGED field-level technical staff at the stakeholder consultation meetings held in each Upazila.

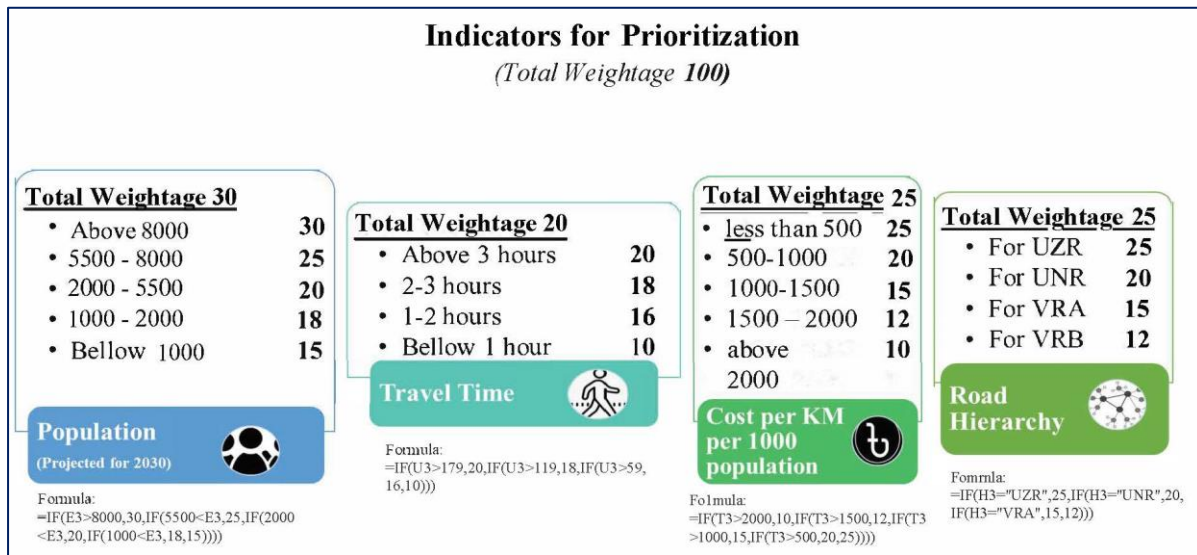


Figure 2: Prioritization indicators & their weightage values

## 2.6 MAPPING HARD-TO-REACH VILLAGES & POPULATION

- With the active support of LGED technical staff, first, draw every priority listed MVMT roads and Hard-to-reach villages on the LGED GIS map in presence of the union Chairman and members who know the sub-project and are the best. This was not in scale but approximation was reached by triangulation. Then digitized on screen using GIS, validate with Google map, and checked with data and information on important features and points collected using GPS during field visits.
- There were challenges in deciding on starting node and/or zero chainage of the non-gazette (No ID) road because not all non-gazette sub-projects were visited and surveyed by the Study team.

## 2.7 WRAP UP MEETING

Wrap up the fieldwork progress at each district holding a meeting chaired by the Executive Engineer, LGED, and participated by all Upazila engineers of the respective district. On completion of the fieldwork, this was conducted to share issues and updates to the district Executive Engineer for feedback and action, as necessary.

## 2.8 VALIDATION WORKSHOP

On completion of data analysis and drafting of the database and mapping, the Study outputs were shared with the respective districts and Upazilas for final review. The later validation workshop was held at the respective district on the Draft Report to share and validate the findings. This was participated by the LGED Division, District and Upazila officials, and technical staff.

## **2.9 NATIONAL WORKSHOP**

The Draft Report is finalized, incorporating comments received from the validation workshop, LGED head office staff, and the PMO office. A National Level workshop was held at LGED HQ for sharing and disseminating the results of the Study.



## 4 DESCRIPTION OF WETLANDS

### 3.1 DISTRIBUTION OF THE HAORS/ WETLANDS

The Upazila has no haor area. Maximum areas are under hilly tract.

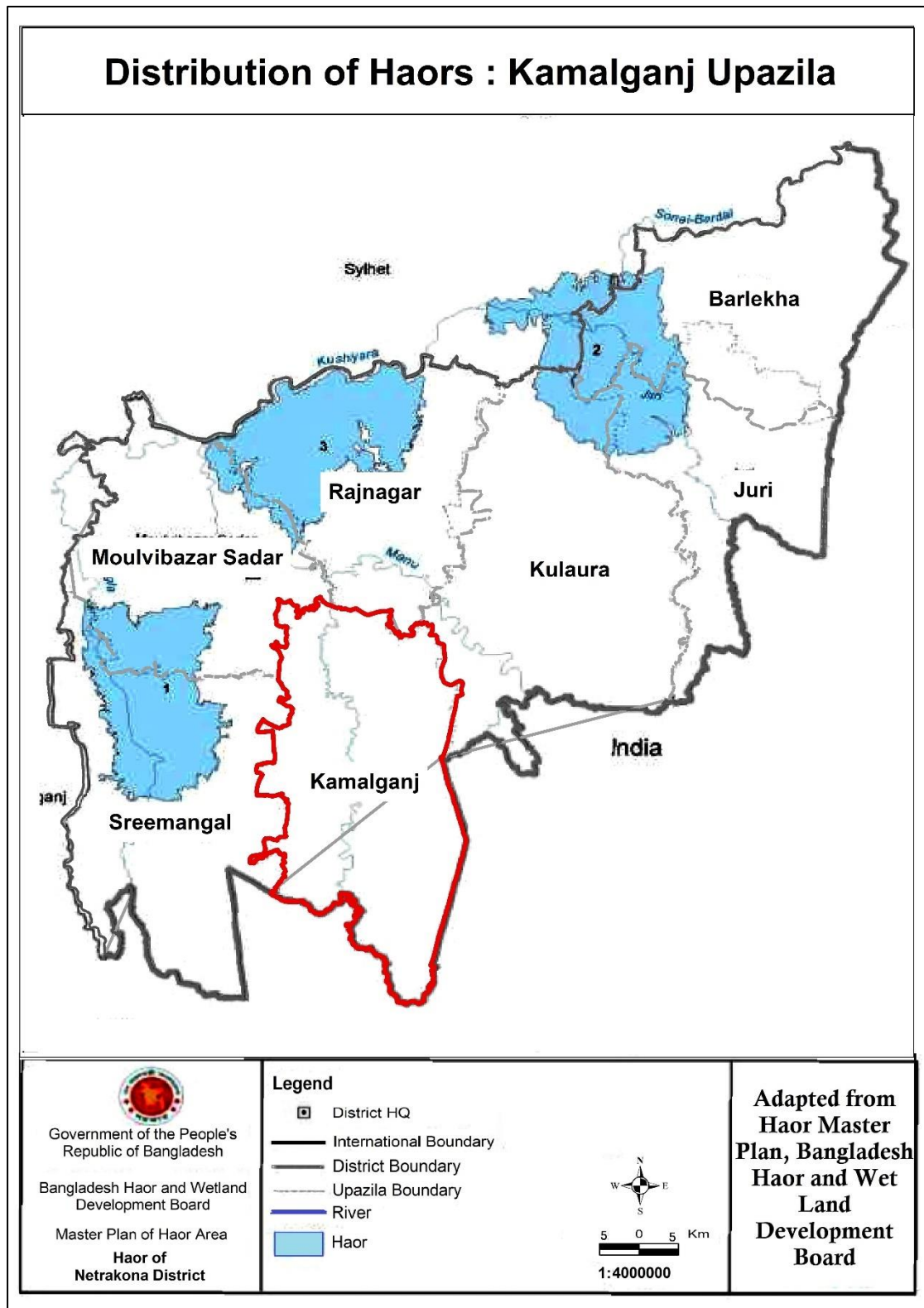


Figure 3: Haor Distribution Map

### 3.2 HAOR/ WETLAND CATEGORY

All the areas of Kamalganj Upazila are under unplanned foothill. Therefore, road or other infrastructure development in this Upazila have several issues.

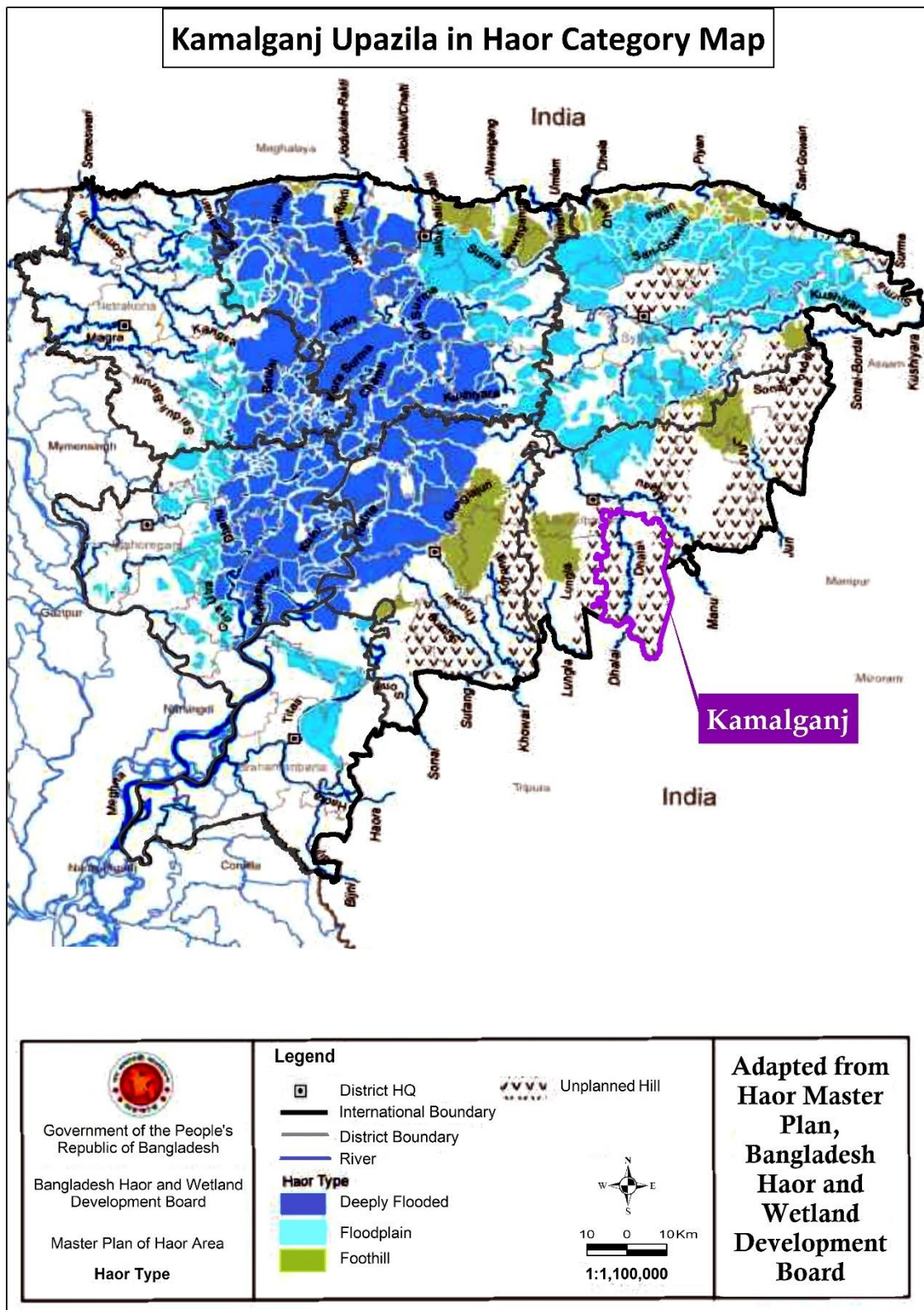


Figure 4: Haor Category Map.

### 3.3 BIO-ECOLOGICAL CHARACTERISTICS

The Bio-ecological characteristics map of the Upazila has been shown below. The map shows that it is under Sylhet Hills.

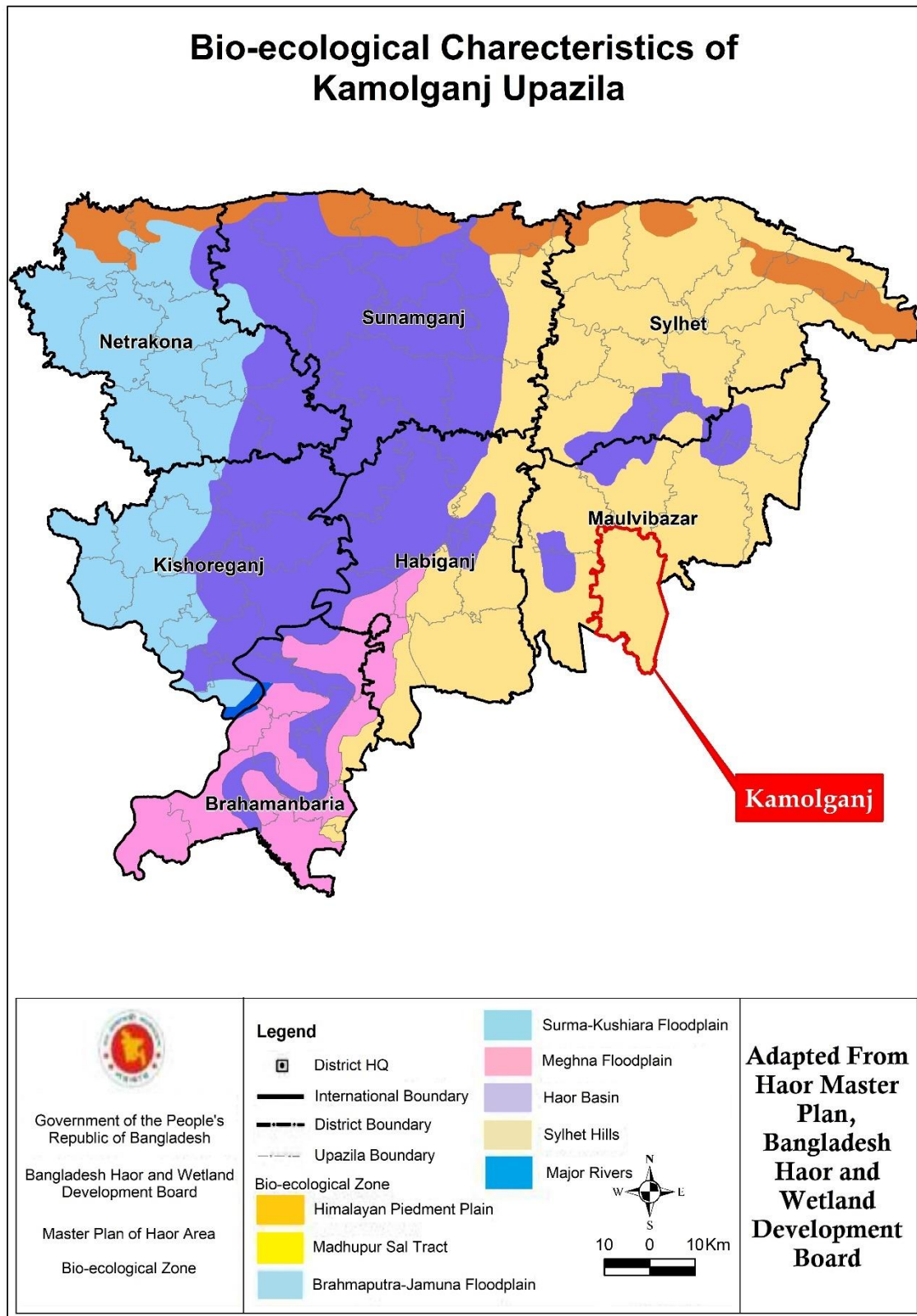


Figure 5: Bio Ecological Characteristics Map

## 5 RURAL ROAD CONNECTIVITY TO THE VILLAGES

---

### 4.1 SUMMARY OF THE VILLAGE CONNECTIVITY

The feature of rural road communications in Kamalganj Upazila is contrasted. Out of 265 villages, only 20 villages are disconnected from the developed paved road network which brings huge suffering for the people of those village. The total rural road network of Kamalganj is 622.2 km and out of which, 304.86 km are paved and 317.34 km earthen.

*Table 1: Total villages in the unions and their connectivity*

SL No	Union	No of Villages	Connected Villages	Hard-to-Reach Villages
1	Adampur	25	23	2
2	Alinagar	23	21	2
3	Islampur	30	28	2
4	Kamalganj	25	21	4
5	Madhabpur	34	32	2
6	Munshi Bazar	32	30	2
7	Patanushar	45	43	2
8	Rahimpur	25	23	2
9	Shamshernagar	26	24	2
<b>Total</b>		<b>265</b>	<b>245</b>	<b>20</b>

## 4.2 MAP OF HARD-TO-REACH VILLAGES & PROPOSED ROADS

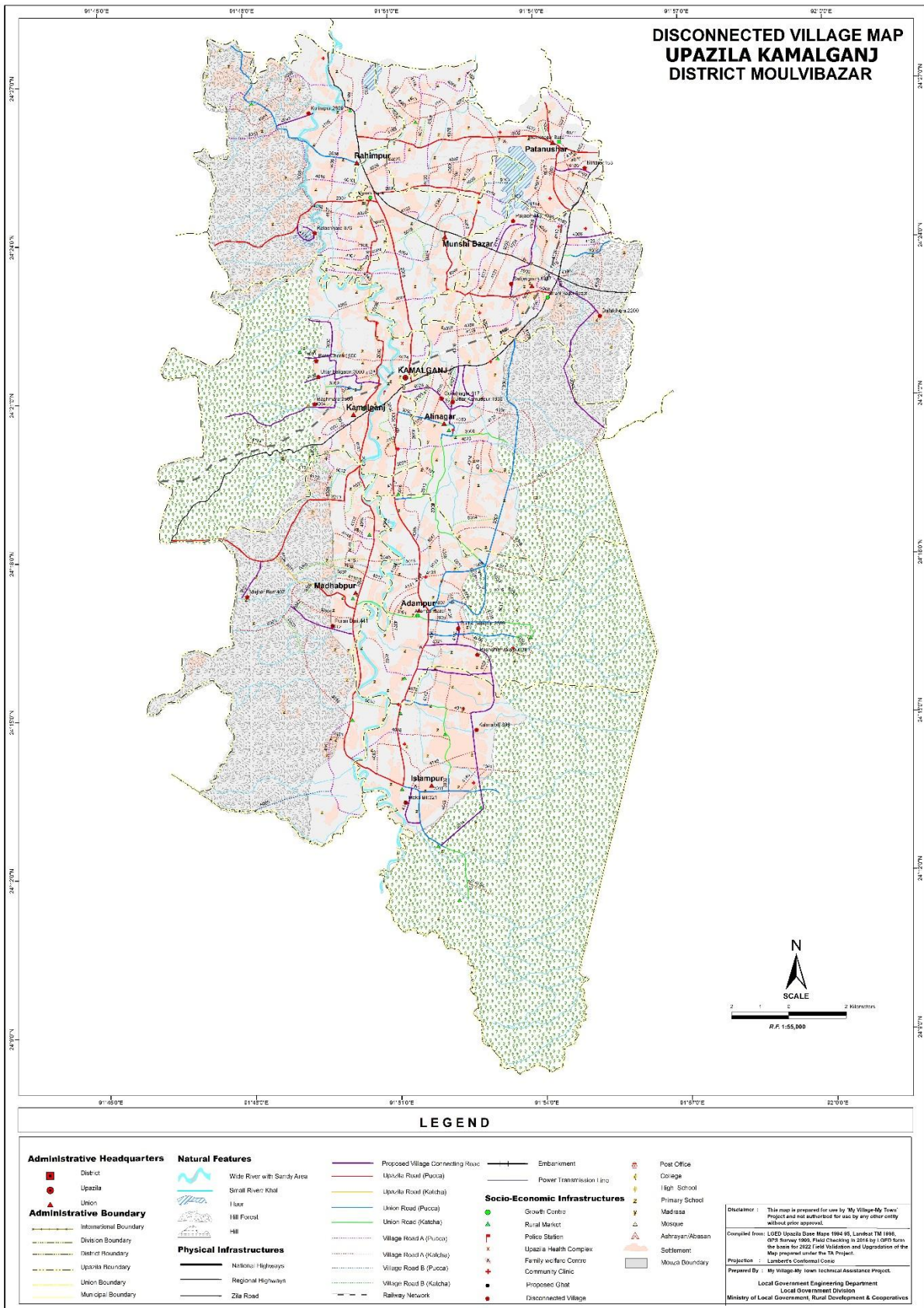


Figure 7: Upazila Map

## 6 DATA COLLECTION & ANALYSIS

The consultant team collected data from the field on Hard-to-Reach Villages. Data were collected from those villages including population, road alignment information (*type, length, condition*), travel time, a structure required on the alignment, potential Riverine routes that can be used for a multi-modal transport system etc. The data were then analyzed, categorized, and finally used to obtain a priority list along with a map (*Figure:5*) showing prioritized roads and Hard-to-Reach Villages. The proposed Riverine & road connectivity by the UE office have been discussed in this section.

### 5.1 PROPOSED ROADWAY FOR HARD-TO-REACH VILLAGES:

At present, roads are the most dominant mode of transportation. Most of the structures were built on the rivers to make road communication effective.

*Table 2: Summary of the rural roads in the Upazila*

Total Road Length of the Upazila (KM)	Paved Length (KM)	Unpaved Length (KM)	Length of unpaved roads of Hard-to-Reach Villages (KM)
622.2	304.86	317.34	53.22

#### 5.1.1 PROPOSED ALL-WEATHER ROUTES:

There are 20 all-weather roads proposed to connect the HTRV within the Upazila. The road name, ID, road condition, and the length of the unpaved roads are as bellow;

*Table 3: Proposed all-weather roads in the Upazila*

Sl. No	Road Name	Road ID	Road Condition	Unpaved length (Km)
1	Bhanugach-Soraibaribazar Road (upto Kalachara bit)	658563005	All Weather	3.80
2	Nainerpar bazar-Islampur UP office via Kathalkandi BOP Camp Road	658563014	All Weather	4.15
3	Shamshernagar-Daffolchara BDR Camp. Road via chatlapur	658564015	All Weather	6.00
4	Kamudpur-Chitlia Road (starting from kamudpur salimbazar road)	658564027	All Weather	5.74
5	Bhanugach-Bagmara Road (start from baligaon road)	658564054	All Weather	6.00
6	Shamshernagar U.P office -Satijirgaon road	658564008	All Weather	1.31
7	Bhanugach - Soraibari road To Upazila Health Complex Road.	658564093	All Weather	2.02
8	Munshibazar-Shamshernagar RHD Road-Paulgaon School road.	658564102	All Weather	2.95
9	Bhanugach- Soraibari Road-to Bangaon-Rajtila-Uttarbaligaon road	658564132	All Weather	2.00

Sl. No	Road Name	Road ID	Road Condition	Unpaved length (Km)
10	Adhkani-Purba Jalalpur Road	658564140	All Weather	0.45
11	Bhanugach - Soraibari road To Verachara Road.	658564091	All Weather	2.50
12	Kalachara Circular Road via Kalachara Swith Gate Road	658564131	All Weather	2.00
13	Jalalpur-Uttarbhag Road	658564024	All Weather	1.00
14	Kamalganj-Gakulnagar road	658564028	All Weather	1.20
15	Noorjahahan Tee Garden--Majerchara Road	658565023	All Weather	1.50
16	Golerhaor chowmuhani-Mukabil via Ganganagar road	658564147	All Weather	1.65
17	Madanmohanpur-Tea garden-Puranbari link road	658564017	All Weather	2.00
18	Munshibazar - Shamsernagar RHD Road - Paulgaon School Road.	658564102	All Weather	2.95
19	Airport-Tarapassa Road to Sreesurja-Usmaghor Road	658564126	All Weather	0.50
20	Byddanathpur-Gunjarkandi Road.	658564086	All Weather	3.50

### 5.1.2 PRIORITY FOR ROAD DEVELOPMENT

Considering resources constraint, benefited a group of people, the time required to travel & road hierarchy, a priority list has been developed (Annexure- 2) for the HTRV (Hard to Reach Villages). The priority score has been determined according to following

*Table 4: Considered weightage values for the prioritization*

Criteria	Weightage
Population	30
Travel Time	20
Cost per 1000 Population	25
Road Type	25
<b>Total=</b>	<b>100</b>

It has been observed that there are a number of roads that bear the same score. In these cases, the minimum budget required for providing connectivity to thousands of people- will get more priority compared to more budget-required roads. The roads bearing ID will have higher priority than the roads without ID.

## 7 CONCLUSION & RECOMMENDATIONS

---

- Kamalganj Upazila is located under Sylhet Hills & is partially a part of Himalayan Piedmont Plain. The other areas are under Haor Basin. Kamalganj is covered by no major haors/ wetlands and there exist only Dholai river flowing over the Upazila that dominate the ecosystem, and transport system of the Upazila. During monsoons, these Rivers carry a huge volume of flood water.
- As the Upazila is heavily flooded during monsoon, rural roads and structures are highly vulnerable in this Upazila.
- The Upazila has a total number of 20 Hard-to-Reach Villages. To develop rural connectivity, there are proposals for both all-weather and submersible roads. This report contains a list of roads with their priority. The priority has been determined based on Population, Travel Time, Cost per KM/1000 people & Road Hierarchy.
- This Upazila is highly vulnerable to disasters. Due to climate change, vulnerability is getting intense. The year 2022 has shown catastrophic flood that was not seen over the last 18 years (*last in 2004 similar to 1998 & 1988*). Therefore, it is highly recommended to study the road alignments before going for investment.
- Case-by-case design of roads in this Upazila considering different aspects such as exposure to floods, erosion etc. is highly recommended. A special study regarding the road and structure design of the Kamalganj Upazila in MoulviBazar district is highly recommended.



## ANNEXURE - 1

### DETAILS OF GROWTH CENTER & HATBAZAR

Union	Market Name	Market Category (GC=Growth Center, HB=Hat Bazar)	Market Listed? (Yes/No)	Market Category (General/Special/Collection center)	Market Category (Wholesale/Retail/both)	Hat Day	Chandina Viti (Number)	Chandina Viti (Land)	Chandina Viti (Shop)	Land Area (Acre)			Lease/ Khas Collectio n BDT (2020)	Lease/ Khas Collectio n BDT (2019)
										Toha	Khas	Private		
Adampur	Nainarpar bazar	HB	Yes	General Market	Wholesale	2	0	0.00	0	0.00	0.00	0.00	48000	45700
Adampur	Ranir bagar	HB	Yes	General Market	Both	2	1	0.05	0	0.19	0.32	0.00	5110	43000
Adampur	Adhkani new bazar	HB	Yes	General Market	Wholesale	2	2	0.17	0	0.10	0.34	0.00	5600	5200
Adampur	Haranga bazar	HB	Yes	General Market	Wholesale	2	0	0.00	0	0.15	0.15	0.00	9000	1500
Adampur	Adampur bazar	GC	Yes	Collection Center	Both	2	7	0.55	43	0.97	2.14	0.00	3760000	3500000
Alinagar	Alinagar bazar	HB	No	General Market	Wholesale	7	0	0.00	0	0.00	0.00	0.00	0	0
Alinagar	Solim bazar	HB	No	General Market	Wholesale	7	0	0.00	0	0.48	0.48	0.00	0	0
Alinagar	Sunsara bazar	HB	No	General Market	Wholesale	7	0	0.00	0	0.00	0.00	0.00	0	0
Islampur	Champaroy bazar	HB	No	General Market	Wholesale	7	0	0.00	0	0.00	0.00	0.00	0	0
Islampur	Tilar bazar	HB	Yes	General Market	Both	2	2	0.46	1	0.48	1.15	0.00	9100	14525
Islampur	Golerhaor bazar	HB	No	General Market	Both	7	0	0.00	0	0.00	0.00	0.00	0	0
Islampur	Rajkandi new bazar	HB	Yes	General Market	Wholesale	2	3	0.25	0	0.27	0.62	0.00	18895	4100
Islampur	Kurma bazar	HB	No	General Market	Both	7	0	0.00	0	0.00	0.00	0.00	0	0
Kamalganj	Bhanugach bazar	GC	No	Collection Center	Both	2	46	0.16	200	0.34	1.16	0.00	920000	860000
Kamalganj	Saraybari bazar	HB	No	General Market	Wholesale	2	0	0.30	55	0.23	0.23	0.00	0	0
Madhabpur	Patrakhola bazar	HB	No	General Market	Wholesale	7	0	0.00	0	0.00	0.00	0.00	0	0

Union	Market Name	Market Category (GC=Growth Center, HB=Hat Bazar)	Market Listed? (Yes/No)	Market Category (General/Special/Collection center)	Market Category (Wholesale/Retail/both)	Hat Day	Chandina Viti (Number)	Chandina Viti (Land)	Chandina Viti (Shop)	Land Area (Acre)			Lease/ Khas Collection BDT (2020)	Lease/ Khas Collection BDT (2019)
										Toha	Khas	Private		
Madhabpur	Madhapur bazar	HB	No	General Market	Wholesale	2	0	0.00	0	0.03	0.03	0.00	0	3000
Madhabpur	Shib bazar	HB	Yes	General Market	Both	2	2	0.10	27	0.16	0.31	0.00	0	7000
Munshi Bazar	Munshi bazar	GC	Yes	Collection Center	Both	2	1	0.08	0	0.72	1.45	0.00	1855505	1251999
Patanushar	Shahid nager bazar	GC	Yes	Collection Center	Wholesale	2	0	0.00	0	0.21	0.21	0.00	26500	6000
Patanushar	Rajdighirpar bazar	HB	Yes	General Market	Both	2	3	0.13	17	0.15	0.44	0.00	44750	36555
Patanushar	Portton ushar	GC	No	General Market	Both	7	0	0.00	0	0.00	0.00	0.00	0	0
Rahimpur	Kalenga bazar	HB	Yes	General Market	Both	2	2	1.37	0	5.40	7.74	0.00	96000	25000
Rahimpur	Chitra ghat bazar	HB	Yes	General Market	Wholesale	2	0	0.00	0	0.08	0.08	0.00	1101	6200
Shamshernagar	Shamse nagar bazar	GC	Yes	Collection Center	Both	2	3	0.28	12	0.94	1.41	0.00	3000000	3050000

## ANNEXURE - 2

### PRIORITY LIST FOR ROAD DEVELOPMENT

SL No	Upazila	Connecting Union	Connecting Village	Village Population BBS 2011	Population 2021 (Based on BBS 2011)	Road Name	Road ID	Road Type	Road Type by Surface Condition	Total Road Length	Paved length (Km)	HBB Length (km)	Unpaved length (Km)	Total Road Length to be Developed	HBB + Unpaved in (km)	Approx. Cost of Road (Lac)	Structure/ Gap (Meter)	Cost of Structure (in Lac)	Total Cost (in lac) (Roads + Structures)	Population /KM	Tentative Budget/1000 Population (in lac)	Travel Time (in min)	Weightage for Road Hierarchy	Weightage for Travel Time	Weightage for Cost per 1000 Pop	Weightage for Road Hierarchy	Total Weightage	Priority
1	Kamalganj	Rahimpur	kalachara	876	1004	Bhanugach-Soraibaribazar Road (upto Kalachara bit)	658563005	UNR	All Weather	9.00	5.21	0.00	3.80	9.00	3.80	455.40	0.00	0.00	455.40	264	453.73	56.93	18	10	25	20	73	
2	Kamalganj	Islampur	Kalaraibill	898	1029	Nainerpar bazar-Islampur UP office via Kathalkandi BOP Camp Road	658563014	UNR	All Weather	10.20	6.05	0.00	4.15	10.20	4.15	498.00	0.00	0.00	498.00	248	484.01	62.25	18	16	25	20	79	
3	Kamalganj	Shamshernagar	Dafalchora	2200	2521	Shamshernagar-Daffolchara BDR Camp. Road via chatlapur	658564015	VRA	All Weather	8.00	2.00	0.00	6.00	8.00	6.00	720.00	0.00	0.00	720.00	420	285.64	90.00	20	16	25	12	73	
4	Kamalganj	Alinagar	Uttar Kamudpur	1800	2062	Kamudpur-Chitlia Road (starting from kamudpur salimbazar road)	658564027	VRA	All Weather	6.34	0.60	0.00	5.74	6.34	5.74	688.80	0.00	0.00	688.80	359	333.98	86.10	20	16	25	12	73	
5	Kamalganj	Kamalganj	Baghmara	2500	2864	Bhanugach-Bagmara Road (start from baligaon road)	658564054	VRA	All Weather	6.00	0.00	0.00	6.00	6.00	6.00	720.00	0.00	0.00	720.00	477	251.36	90.00	20	16	25	12	73	
6	Kamalganj	Shamshernagar	Satijergram	1937	2219	Shamshernagar U.P office - Satijirgaon road	658564008	VRA	All Weather	3.03	1.72	0.00	1.31	3.03	1.31	157.20	0.00	0.00	157.20	1694	70.83	19.65	20	10	25	12	67	
7	Kamalganj	Kamalganj	Korimpur	2809	3218	Bhanugach - Soraibari road To Upazila Health Complex Road.	658564093	VRA	All Weather	2.50	0.48	0.00	2.02	2.50	2.02	242.40	95.00	855.00	1097.40	1593	340.97	30.30	20	10	25	12	67	
8	Kamalganj	Munshibazar	Paulgaon	1870	2143	Munshibazar-Shamshernagar RHD Road-Paulgaon School road.	658564102	VRA	All Weather	3.50	0.55	0.00	2.95	3.50	2.95	354.00	0.00	0.00	354.00	726	165.22	44.25	20	10	25	12	67	
9	Kamalganj	Kamalganj	Uttar baligaon	3000	3437	Bhanugach- Soraibari Road-to Bangaon-Rajtila-Uttarbaligaon road	658564132	VRA	All Weather	2.00	0.00	0.00	2.00	2.00	2.00	240.00	0.00	0.00	240.00	1719	69.82	30.00	20	10	25	12	67	
10	Kamalganj	Adampur	Purba Jalalpur	2589	2966	Adhkani-Purba Jalalpur Road	658564140	VRA	All Weather	1.50	1.05	0.00	0.45	1.50	0.45	54.00	0.00	0.00	54.00	6592	18.20	6.75	20	10	25	12	67	
11	Kamalganj	Kamalganj	Bara Chora	1500	1719	Bhanugach - Soraibari road To Verachara Road.	658564091	VRA	All Weather	2.50	0.00	0.00	2.50	2.50	2.50	300.00	0.00	0.00	300.00	687	174.56	37.50	18	10	25	12	65	
12	Kamalganj	Rahimpur	Kalachhara	876	1004	Kalachara Circular Road via Kalachara Swith Gate Road	658564131	VRA	All Weather	3.00	1.00	0.00	2.00	3.00	2.00	240.00	0.00	0.00	240.00	502	239.12	30.00	18	10	25	12	65	
13	Kamalganj	Adampur	Pashchim Jalalpur	381	437	Jalalpur-Uttarbhag Road	658564024	VRA	All Weather	1.80	0.80	0.00	1.00	1.80	1.00	120.00	0.00	0.00	120.00	437	274.89	15.00	15	10	25	12	62	
14	Kamalganj	Alinagar	Gokulnagar	700	802	Kamalgonj-Gakulnagar road	658564028	VRA	All Weather	3.00	1.80	0.00	1.20	3.00	1.20	144.00	0.00	0.00	144.00	668	179.54	18.00	15	10	25	12	62	
15	Kamalganj	Madhabpur	Majher Bari	407	466	Noorjahahan Tee Garden--Majerchara Road	658565023	VRB	All Weather	1.50	0.00	0.00	1.50	1.50	1.50	180.00	0.00	0.00	180.00	311	386.00	22.50	15	10	25	12	62	
16	Kamalganj	Islampur	Moka Bil	368	422	Golerhaor chowmuhani-Mukabil via Ganganagar road	658564147	VRA	All Weather	1.65	0.00	0.00	1.65	1.65	1.65	198.00	0.00	0.00	198.00	256	469.59	24.75	15	10	25	12	62	
17	Kamalganj	Madhabpur	Puran Bari	441	505	Madanmohanpur-Tea garden-Puranbari link road	658564017	VRA	All Weather	2.00	0.00	0.00	2.00	2.00	2.00	240.00	5.00	45.00	285.00	253	564.04	30.00	15	10	20	12	57	
18	Kamalganj	Munshi Bazar	Paljaon	443	508	Munshibazar - Shamshernagar RHD Road - Paulgaon School Road.	658564102	VRA	All Weather	3.50	0.55	0.00	2.95	3.50	2.95	354.00	0.00	0.00	354.00	172	697.44	44.25	15	10	20	12	57	
19	Kamalganj	Patanushar	Minaroi	153	175	Airport-Tarapassa Road to Sreesurja-Usmaghor Road	658564126	VRA	All Weather	1.70	1.20	0.00	0.50	1.70	0.50	60.00	0.00	0.00	60.00	351	342.27	7.50	15	10	25	12	62	
20	Kamalganj	Patanushar	Minaroi	153	175	Byddanathpur-Gunjarkandi Road.	658564086	VRA	All Weather	3.50	0.00	0.00	3.50	3.50	3.50	420.00	0.00	0.00	420.00	50	2395.87	52.50	15	10	10	12	47	

\*\*\* Cost for Roads & Structures; (All Weather Rd= 120 lac/km, Submersible= 180 lac/km, Structure= 9 lac/m)  
 \*\*\* Weightage Values; (Population = 30, Travel Time= 20, Cost per KM/1000 people= 25, Road Hierarchy= 25)