



GOVERNMENT OF THE PEOPLE'S REPUBLIC OF BANGLADESH
MINISTRY OF LOCAL GOVERNMENT, RURAL DEVELOPMENT AND CO-OPERATIVES
Local Government Engineering Department (LGED)
Agargaon, Sher-E-Bangla Nagar, Dhaka-1207

Final Report on Study-03
'My Village -My Town' -Technical Assistance Project
“Feasibility Study for Rural Connectivity including Multi-Modal Transport
System in Char and Haor Areas”

Golapganj Upazila, Sylhet



July, 2022

CONTENTS

GLOSSARY	i
ABBREVIATIONS	ii
Background	iii
1 Description of the Upazila	1
1.1 Geography and Demography	1
1.2 Education Features.....	1
1.3 Rural Road Communications.....	1
1.4 Agriculture, Food Production, and Fisheries	1
1.5 Growth Centre and Hatbazar.....	2
2 Location of the Upazila	3
3 Approach & Methodology.....	4
3.1 Study Team Composition.....	4
3.2 Study Area.....	4
3.3 Database Review and Analysis	4
3.4 Prioritization Criteria of Sub-projects	5
3.5 Weightage Distribution for Prioritization.....	5
3.6 Mapping Hard-to-reach Villages & Population.....	6
3.7 Wrap Up Meeting.....	6
3.8 Validation Workshop.....	6
3.9 National Workshop.....	7
4 Description of Wetlands.....	8
4.1 Distribution of the Haors/ Wetlands.....	8
4.2 Haor/ Wetland Category.....	9
4.3 Bio-Ecological Characteristics	10
5 Rural Road Connectivity to the Villages	11
5.1 Summary of the Village Connectivity.....	11
5.2 Villages and their connectivity – Union level.....	12
5.3 Map of Hard-to-Reach Villages & Proposed Roads.....	18
6 Data Collection & Analysis	19
6.1 Proposed Roadway for Hard-to-Reach Villages:.....	19
6.1.1 Proposed All-Weather Routes:.....	19
6.1.2 Proposed Roads for Hard-to-Reach Villages Having No ID:	21
6.1.3 Priority for Road Development	21
8 Conclusion & Recommendations	22
Annexure - 1.....	23
Annexure - 2.....	26

List of Figures

Figure 1: Upazila Location Map	3
Figure 2: Prioritization indicators & their weightage values	6
Figure 3: Haor Distribution Map	9
Figure 4: Haor Category Map.	10
Figure 5: Bio Ecological Characteristics Map.....	10
Figure 6: Upazila Map	18

List of Tables

Table 1: Total villages in the unions and their connectivity.....	11
Table 2: Union-wise connected & Hard-to-Reach Villages and their population.....	12
Table 3: Summary of the rural roads in the Upazila.....	19
Table 4: Proposed all-weather roads in the Upazila	19
Table 5: Proposed Submersible roads in the Upazila.....	20
Table 6: Proposed roads for Hard-to-Reach Villages having No ID	21
Table 7: Considered weightage values for the prioritization.....	21

GLOSSARY

Hard-to-reach Villages mean in the Study those villages that are not connected by any paved road with the respective Upazila HQ and/or Union Parishad, and to the nearest economic activity hub and social service centres. The following explanations are important for the concept of hard-to-reach villages.

- In haor areas, Villages connected with submersible roads dry season and connected with Riverine/haor routes in the monsoon season have been considered accessible and excluded from hard-to-reach villages.
- Within Upazila, Villages that need a bridge to connect have not been considered hard-to-reach villages.
- In the case of island Upazilas, villages that are accessible with paved roads from Upazila HQ have been considered accessible and excluded from hard-to-reach villages.
- In the case of villages that are connected with HBB (Herring-Bone-Bond) or Brick flat soling routes have been considered hard-to-reach villages

Mauza Mauza is normally the geographical expression of a unit of landmass for revenue settlement and revenue collection, whereas, the village is a human settlement within a Mauza with a strong social bond. Within a Mauza there could be more than one village.

Union Bangladesh has 3-tiers local government systems: District, Upazila, and Union. Union is the lowest level of local government below Upazila Parishad

Upazila Sub-district; the third level of government administration below division and district.

Hat Synonym of Bazar or market

Walking Trail means in the Study the village pathway or access used for walking by commuters, in most cases does not have gazetted or established or commonly used alignment, and to the most, passable by bicycle or motorbike. These village trails are not passable by motorized jeeps or mini trucks or emergency service vehicles or not even any three-wheelers.

Unpaved Roads have no pavement or surface material. They are usually earthen roads.

Vulnerability is the human dimension of risk that is defined as conditions determined by physical, social, economic, environmental, political, cultural, and institutional factors or processes that increase the likelihood of an individual or a community to the impacts of shocks and hazards.

Climate-Resilience is expressed as the ability of a community to resist, absorb, adapt to and recover better from the impacts of disasters like floods and landslides in a sustainable way.

ABBREVIATIONS

ADB	– Asian Development Bank
BBS	– Bangladesh Bureau of Statistics
BC	– Bitumen Carpeting
DatEx	– Data Expert (Pvt.) Limited
DECL	– Delight Engineers and Construction Ltd.
DoE	– Department of Environment
DPHE	– Department of Public Health Engineering
DPP	– Development Project Proposal
FGD	– Focus Group Discussion
GIS	– Geographic Information System
GOB	– Government of Bangladesh
HBB	– Herring-Bone-Bond
HQ	– Headquarter
HTRV	– Hard-to-Reach Village
JV	– Joint Venture
KII	– Key Informant Interview
LGD	– Local Government Division
LGED	– Local Government Engineering Department
LGI	– Local Government Institute
MVMT	– My Village My Town
NGO	– Non-Government Organization
PD	– Project Director
PMO	– Project Management Office
RCC	– Reinforced Concrete
RHD	– Roads & Highways Department
SDGs	– Sustainable Development Goals
TA	– Technical Assistance Project
UE	– Upazila Engineer
UNDP	– United Nations Development Programme
UNO	– Upazila Nirbahi Officer
UNR	– Union Road
UP	– Union Parishad
UPZ	– Upazila Road
VRA	– Village Road A
VRB	– Village Road B

BACKGROUND

Context of the Project

The Government of Bangladesh made massive plans to ensure equitable development around the country. Under this development philosophy, the GoB requirements are to reduce the rural-urban divide to foster developmental benefits for all citizens. As part of this, the government declared an election manifesto on the eve of the national parliament election 2018 uniting the theme **Bangladesh on the March Towards Prosperity** aiming at transforming Bangladesh into a developed nation by 2041. Under this, villages have been considered the basic unit of prosperity for building a developed nation.

This firm commitment was declared following the light of the philosophy of the Father of the Nation Bangabandhu Sheikh Mujibur Rahman to build ‘Sonar Bangla’ (Golden Bangla) through inclusiveness, balanced, and development for all.

Following the philosophy of the Father of the Nation, the government declared its election manifesto 2018 titled ‘My Village-My Town’- Extension of Modern Civic Amenities in Every village. The Local Government Division under the Ministry of Local Government, Rural Development and Cooperatives has prepared a comprehensive work plan to make this election commitment a reality. The Local Government Division with its two agencies, the Local Government Engineering Department (LGED) and Department of Public Health Engineering (DPHE) has undertaken a technical assistance project named ‘My Village-My Town’- Technical Assistance Project. Under this project, 36 studies and 30 guidelines are being developed on eight thematic components related to the mandate of the Local Government Division. The eight thematic components are Rural Communications, Growth Centre and Hat Bazar, Rural Water Supply and Sanitation, Rural Waste Management, Community Space and Recreation Facilities, Upazila Masterplan, Rural Housing and Capacity building of Upazila and Union Parishad. Besides this, a coordination framework is being developed among the other ministries involved in the implementation of the My Village-My Town election manifesto. It is notable to mention that a coordination committee has been formed comprising 21 ministries to implement the program in a coordinated way under the leadership of the Minister of Local Government, Rural Development, and Co-operatives.

Context of the Report

This report is a part of the study of the component ‘Rural Connectivity’. Rural connectivity is the basic of all amenities in the villages. Rural connectivity works as the conduit that can supply a number of bare necessities such as access to the market, health, education, employment etc. In general, Bangladesh has remarkable progress in rural connectivity. Instead of this, a number of regions of the country are geographically sensitive where rural connectivity is not easy and has a lot of challenges. These regions are -Haor, Beel, Hills, Chars, islands etc. The people residing in these regions have considerably low access to civic amenities compared to other villages of the country. Therefore, the study and plan development of improvement of rural connectivity is one of the important assignments of the technical assistance project. The project undertook an Upazila-based special study on the villages of these geographically sensitive regions that are mentioned before.

This report contains the rural connectivity status and priority plan of the **Golapganj** Upazila of **Sylhet** District.

1 DESCRIPTION OF THE UPAZILA

1.1 GEOGRAPHY AND DEMOGRAPHY

The geographical area of Golapganj Upazila is 278.33 square kilometers and has 11 unions, 98 mauzas, and 244 villages. The Upazila is 18km away from the district headquarters of Sylhet. Golapganj is partly covered by 9 major haors/ wetlands and there exist Surma and Kusiara rivers flowing over the Upazila. The total population of Upazila is 316149 of which 154249 are male and 161900 females, the total number of households are 50465 and the average household size is 6.2 with a population density of 1136 (as per population census 2011).

1.2 EDUCATION FEATURES

According to the information of the relevant local government offices, there are 140 government & 23 non-government primary schools in the Upazila. On the other hand, Golapganj has 26 non-government with no government high schools, 4 school & colleges, 3 private colleges, and 18 madrasahs. The literacy rate for the Upazila is 55.9% as per BBS 2011.

1.3 RURAL ROAD COMMUNICATIONS

Bangladesh scored in the rural accessibility index at around 87 percent among South Asian and some other African countries. Generally, the people of Bangladesh get all-weather within 2 kilometers adjacent to their living places. But the feature of rural road communications in Golapganj Upazila is contrasted. There are many villages, disconnected from the developed paved road network that brings huge suffering for the people of the villages. The total rural road network of Golapganj is 689.48 km and out of which, 381.65 km are paved and 307.82 km earthen.

1.4 AGRICULTURE, FOOD PRODUCTION, AND FISHERIES

Though the aggregate (coarse sand, stone chips & stone) business is the main source of income for the inhabitants, agriculture too has major importance for the economy of the people of Golapganj. There are 68777 acres of arable land in Upazila. In the fiscal year 2010-11, the Rice production was 9333, 9267 & 13500 metric tons for Aus, Aman & Boro seasons respectively. The Upazila also produced 300 metric tons of Potato in the same fiscal year 2010-11. A notable quantity of vegetables is also produced here in this Upazila.

According to the BBS (2011) data, Golapganj has 5346 Acre of haor, pond & dighee that produced 350 metric tons of fish. There also exist 258 poultry & 23 dairy farms.

All the agricultural products are adequate to meet the demand of the Upazila and surpluses are sold outside of Golapganj.

1.5 GROWTH CENTRE AND HATBAZAR

Growth Centre and Rural Hatbazar are one of the main centers of the rural economy. Hatbazar is like the heart of the development of the rural economy. Rural Hatbazar plays a role in increasing production and creating employment impacting the supply chain of agriculture and non-agriculture products. There are 43 Hatbazar and 5 growth centers in Upazila. The structural development of Hatbazar and its growth is pivotal to boosting the rural economy. Details of the growth center & hatbazar of the Upazila have been attached in **Annexure-1**.

2 LOCATION OF THE UPAZILA

Golapganj Upazila of Sylhet district in the North-Eastern part of the country. The location has been shown on the map. Flash floods induce severe impacts on both the built and the natural environment. The effects of flash floods can be catastrophic and show extensive diversity, ranging from damages to buildings and infrastructure to impacts on vegetation, human lives, and livestock.

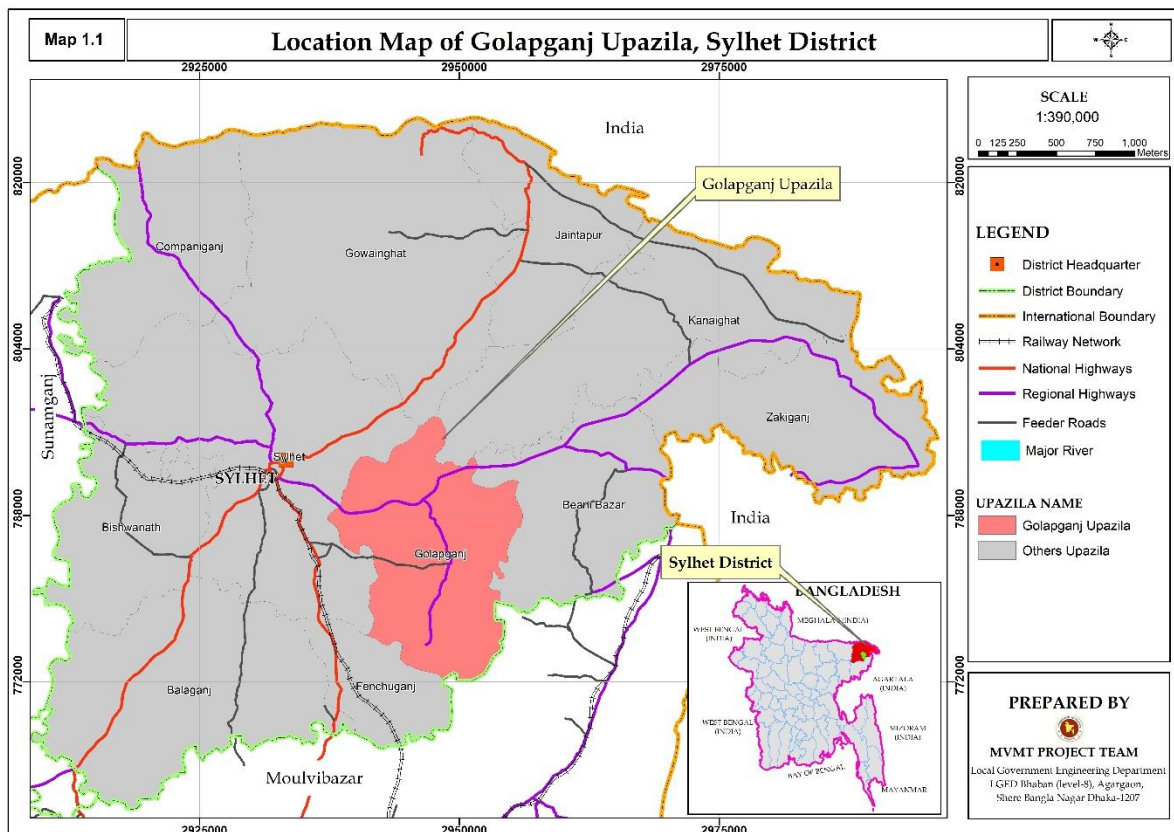


Figure 1: Upazila Location Map

3 APPROACH & METHODOLOGY

3.1 STUDY TEAM COMPOSITION

A team consisting of Senior Rural Road Infrastructure Specialist, Associate Rural Infrastructure Specialist, and Assistant Engineer engaged by the Project Management Office (PMO) conducted the study. On the other hand, A team consisting of Deputy Team Leader cum Rural Infrastructure Engineer, Junior GIS expert, and Junior Engineer engaged by consulting firm (datEx & DECL JV) conducted the study. A participatory approach to review the database and identify priority transport infrastructure needs (‘sub-projects) was instrumental. At the stakeholder consultation meeting held in each district, the database was reviewed, and priority needs were identified and mapped working together with the LGI representatives and LGED technical team. LGED and LGI representatives surveyed each Upazila for the collection of detailed observations and validations of the proposed priority needs.

Stakeholder Consultation Meeting

- Hard-to-reach Village Database and database of sub-projects reviewed
- Prioritization of sub-projects for each Upazila with LGI and LGED representatives
- Hard-to-reach villages and priority sub-projects mapped in the LGED GIS Map

3.2 STUDY AREA

The study was conducted in 72 Upazilas of haor areas, 3 Upazilas of Beel areas, 8 Upazilas of Char areas, and 4 Upazilas of Island areas during the period from December 2021 to June 2022. Apart from this, the PMO team conducted the study in 50 Upazilas of Haor areas, and the rest of the Upazilas of Haor, Beel, Char, and Island areas are conducted by the consulting firm team. The Upazila technical staff of LGED supported in organizing stakeholder consultation meetings and in database review and mapping the Hard-to-reach villages and population during this study period. They also supported the field work and authentication check by visits to the sub-projects in their respective Upazila and looking at the feasibility of some proposed sub-projects from technical, social, and environmental perspectives.

3.3 DATABASE REVIEW AND ANALYSIS

The study applied both qualitative (e.g., focused group discussions and in-depth case study fieldwork) and quantitative (structured and semi-structured interviews) approaches and methods in reviewing and conducting fieldwork in all the haor areas to understand the need and impact of rural accessibility in remote village contexts. The most applied methods in the reviewing and conducting fieldwork were:

- Key Informants Interview (KII)
- Focus Group Discussion (FGD)
- Case Study for authentication check and individual sub-project feasibility study.

- ❖ Review the Hard-to-reach village database at the ‘Stakeholder consultation meeting’ participated by local government representatives such as the UP chairman and members, Upazila chairman, vice-chairman, and UNO.
- ❖ FGD and KII were conducted using a checklist. Composition in the FGD included local community people: male and female, teachers, local farmers, traders, and students depending on availability.
- ❖ KIIs of Union Chairman, Upazila chairman, UNO male and female, and teacher depending on availability.
- ❖ Authentication and feasibility check by visits to the sub-projects reviewed and listed for the 40 selected case study unions under the MVMT project.
- ❖ Survey with GPS machine and Google apps in collecting Hard-to-reach village locations, landmarks, chainage at gaps, village road at sections vulnerable to land erosion damage, narrow existing width or sharp slope location.

3.4 PRIORITIZATION CRITERIA OF SUB-PROJECTS

Prepare a priority list of sub-projects by Upazilas that includes gazette ID roads and non-gazette roads (No ID) with attributes like name and number of villages and population. The criteria used in the prioritization are described below.

- Population, travel time needed from the remotest villages to the Upazila HQ, road type, and cost per km per 1000 population are the indicators weighted giving a value in a formula.
- Priority is given to single connection with no alternative transport road and multi-modal transport route to connecting the villages with Upazila HQ and Union Parishad, growth centre and important markets and social service centres; villages with a higher population and travel time get higher weightage;
- Priority is given to roads, ghats, and collection points that will facilitate agricultural diversification, reduce transportation costs, ensure a fair price and create a farm and non-farm employment and income;
- Priority is given to roads development and inland waterways dredging that will enable year-round mobility of the general public and villagers, in particular, health workers, teachers and students, and tourists to facilitate tourism development, quality education, and better health service in the district and region;
- Special priority is given to sub-projects of roads, Riverine routes/inland waterways that will mainstream deprived communities living in the hard-to-reach villages;
- Identified sub-projects with more cost-effectiveness than others using per km per 1000 population cost for each sub-project;
- Every sub-project(s) is to be climate-resilient, sustainable, and cost-effective.

3.5 WEIGHTAGE DISTRIBUTION FOR PRIORITIZATION

The approaches and methodologies of the Study for reviewing database and prioritization are synthesized in the diagrams below, noting that the proposed sub-projects of roads in the databases are prioritized based on weightage calculated on the set criteria (as shown in the diagram). People’s demands and local needs are reflected in the prioritization which was

determined by the Study, working together with LGI representatives and LGED field-level technical staff at the stakeholder consultation meetings held in each Upazila.

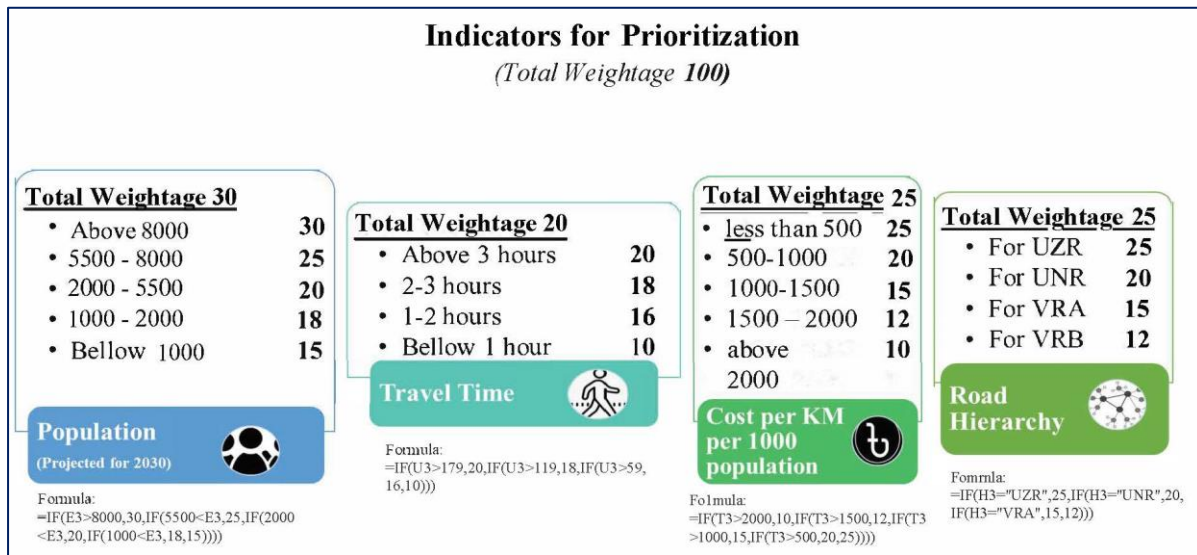


Figure 2: Prioritization indicators & their weightage values

3.6 MAPPING HARD-TO-REACH VILLAGES & POPULATION

- With the active support of LGED technical staff, first, draw every priority listed MVMT roads and Hard-to-reach villages on the LGED GIS map in presence of the union Chairman and members who know the sub-project and are the best. This was not in scale but approximation was reached by triangulation. Then digitized on screen using GIS, validate with Google map, and checked with data and information on important features and points collected using GPS during field visits.
- There were challenges in deciding on starting node and/or zero chainage of the non-gazette (No ID) road because not all non-gazette sub-projects were visited and surveyed by the Study team.

3.7 WRAP UP MEETING

Wrap up the fieldwork progress at each district holding a meeting chaired by the Executive Engineer, LGED, and participated by all Upazila engineers of the respective district. On completion of the fieldwork, this was conducted to share issues and updates to the district Executive Engineer for feedback and action, as necessary.

3.8 VALIDATION WORKSHOP

On completion of data analysis and drafting of the database and mapping, the Study outputs were shared with the respective districts and Upazilas for final review. The later validation workshop was held at the respective district on the Draft Report to share and validate the findings. This was participated by the LGED Division, District and Upazila officials, and technical staff.

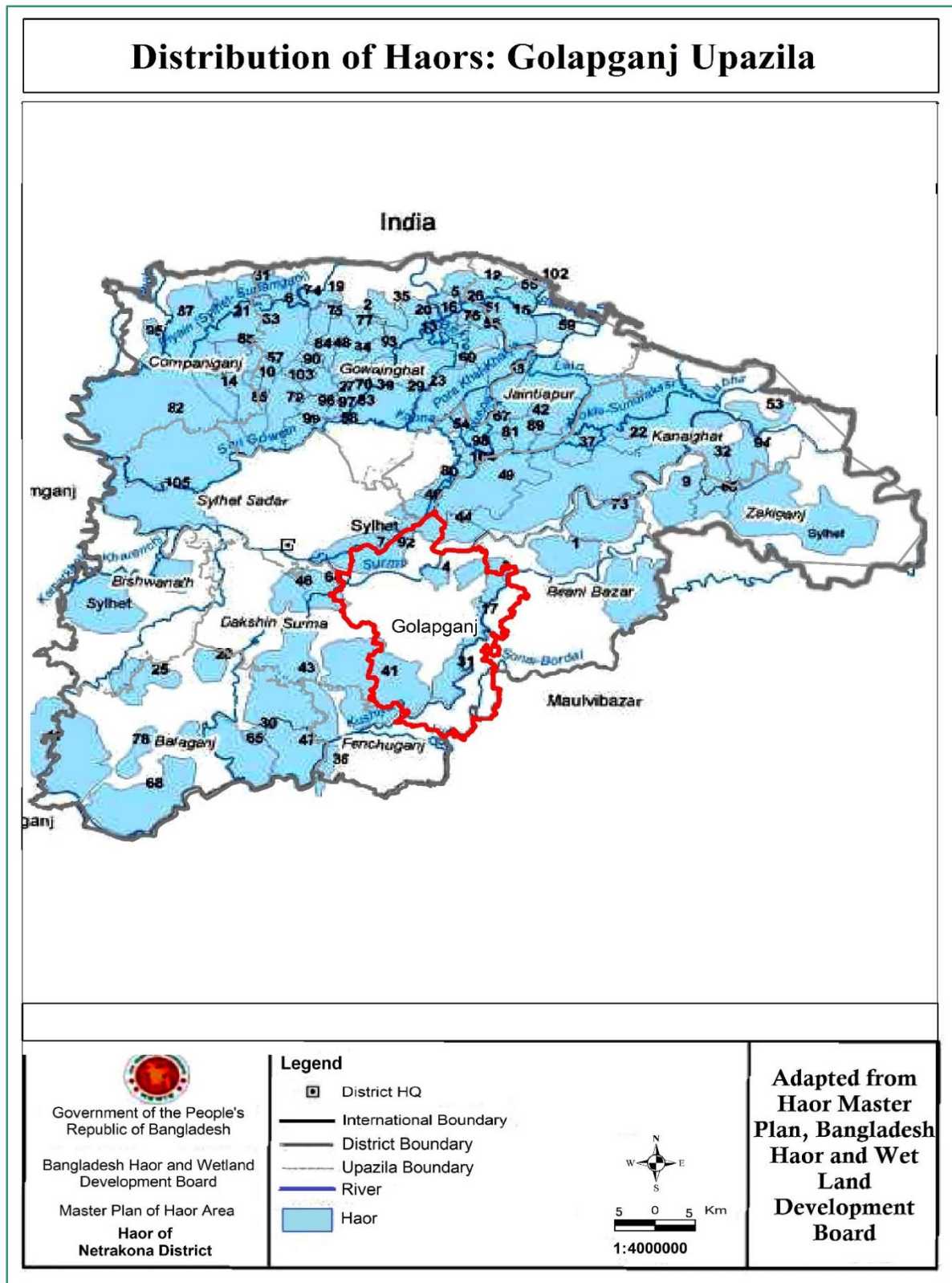
3.9 NATIONAL WORKSHOP

The Draft Report is finalized, incorporating comments received from the validation workshop, LGED head office staff, and the PMO office. A National Level workshop was held at LGED HQ for sharing and disseminating the results of the Study.

4 DESCRIPTION OF WETLANDS

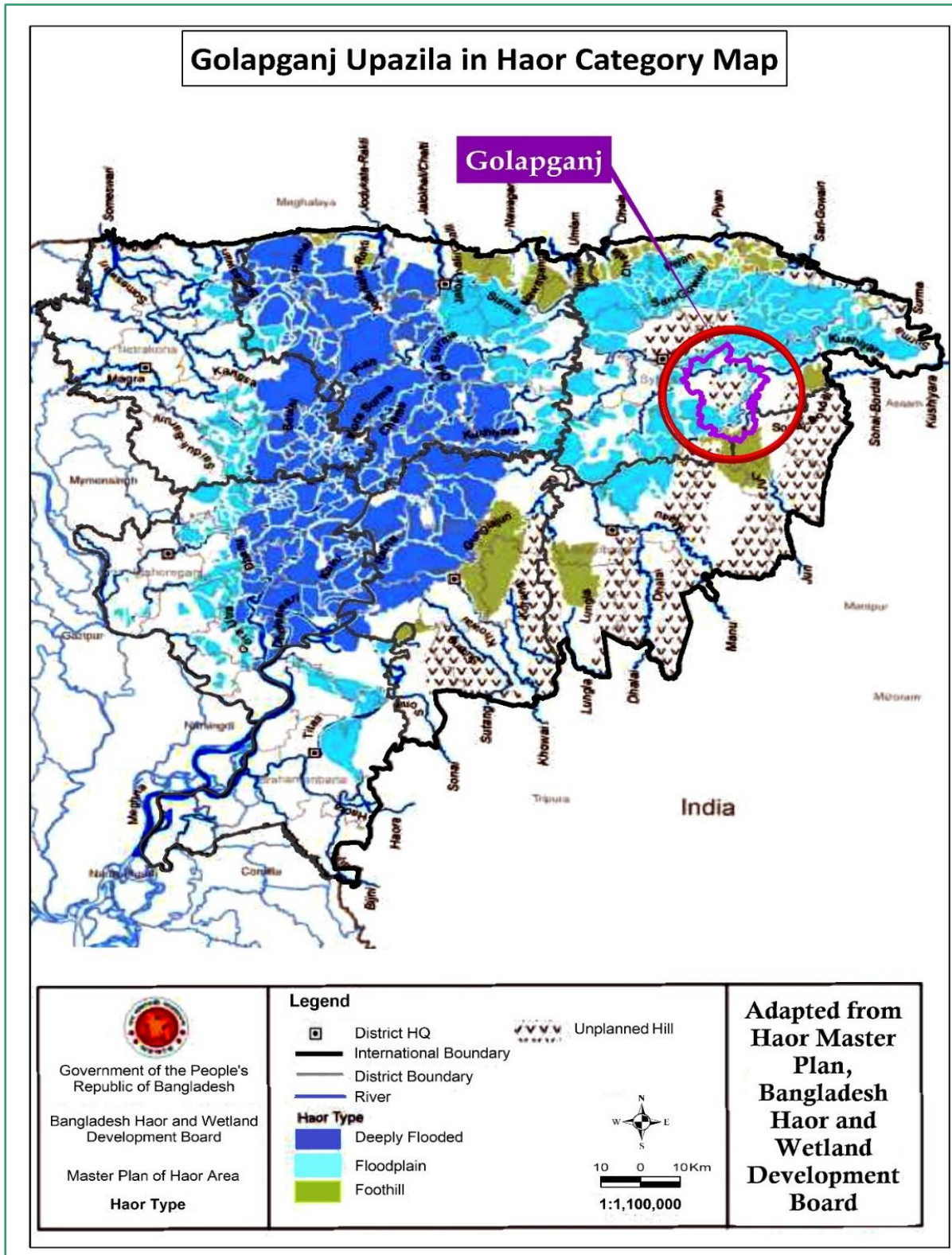
4.1 DISTRIBUTION OF THE HAORS/ WETLANDS

The Upazila has a large portion of flash flood zone that covers almost 20-30% of its land area. The roads within the flood zone become inundated during monsoon, which requires attention to take relevant measures during road construction and maintenance.



4.2 HAOR/ WETLAND CATEGORY

A large are of this Upazila is Under Unplanned Hill and other areas are within floodplain range. Therefore, road or other infrastructure development in this Upazila does not have any major environmental consequences.



4.3 BIO-ECOLOGICAL CHARACTERISTICS

The Bio-ecological characteristics map of the Upazila has been shown below. The map shows that it is mostly Sylhet Hills & is partially a part of Haor Basin. Therefore, adequate openings for the road and road structures should be maintained.

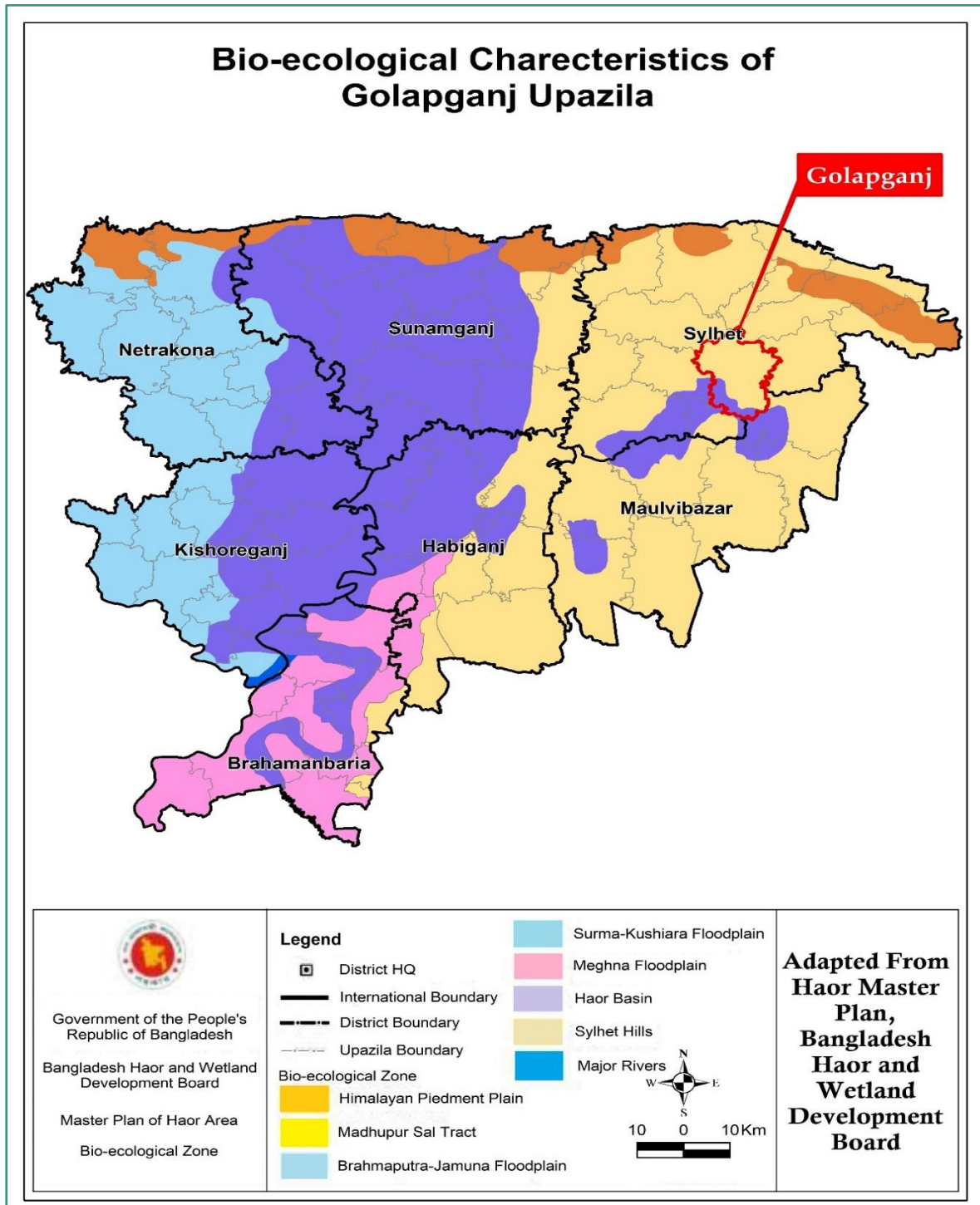


Figure 4: Haor Category Map.

5 RURAL ROAD CONNECTIVITY TO THE VILLAGES

5.1 SUMMARY OF THE VILLAGE CONNECTIVITY

The feature of rural road communications in Golapganj Upazila is contrasted. Out of 243 villages, 33 are disconnected from the developed paved road network which brings huge suffering for the people of those villages. The total rural road network of Golapganj is 689.48 km and out of which, 381.65 km are paved and 307.82 km earthen.

Table 1: Total villages in the unions and their connectivity

SL No	Union	No of Villages	Connected Villages	Disconnected Villages
1	Bagha	31	28	3
2	Bhadeshwar	35	28	7
3	Budbari Bazar	18	18	0
4	Dhaka Dakshin	12	10	2
5	Fulbari	15	13	2
6	Golapganj	20	20	0
7	Lakshanaband	49	45	4
8	Lakshmi Pasha	13	12	1
9	Paschim Amura	11	9	2
10	Shorifgonj	13	8	5
11	Uttar Bade Pasha	26	19	7
Total		243	210	33

5.2 VILLAGES AND THEIR CONNECTIVITY – UNION LEVEL

The consultant arranged a meeting at the Upazila conference room with and all the UP Chairman & their secretaries. The team interviewed a representative of each union and collected data about the HTRV.

Table 2: Union-wise connected & Hard-to-Reach Villages and their population

Union	Sl.No	Connected Villages	Population 2021 (Based on BBS 2011)	Disconnected Villages	Population 2021 (Based on BBS 2011)
Bagha	1	Amdharpur	20	Islamabad	769
	2	Ansar Mahallah	870	Ramganj	316
	3	Betarpar	539	Upar Aglaspur	817
	4	Dakshin Bagha	770		
	5	Dakshin Hatimnagar	1353		
	6	Daulatpur	546		
	7	Fakir Para	200		
	8	Gandamara	566		
	9	Gaurabari	1327		
	10	Jalalnagar	783		
	11	Kalakona	2336		
	12	Kandigaon	2465		
	13	Kandigram	203		
	14	Khalpar	2037		
	15	Lalnagar	2180		
	16	Lama Aglaspur	1063		
	17	Majher Mahallah	1869		
	18	Majidpur	661		
	19	Naluagram	1085		
	20	Paschimgaon	1487		
	21	Purbagaon	990		
	22	Rustampur	1599		
	23	Saber Mahallah	695		
	24	Talamara	1042		
	25	Tudugaon	704		
	26	Turukbhag	2161		
	27	Uttar Golabnagar	1987		
	28	Uttargaon	511		
		Sub Total	32049		1902
Bhadeshwar	1	Ahaortala	1429	Aurangabad	204
	2	Bakar Pur	213	Katakhali haortala	287
	3	Dakshinbagh	2326	Khumia	2123
	4	Dakshinpara	1198	Konagaon	558
	5	Dargah Dair	1450	Krishnapur	317
	6	Fakirtul	624	Sekhpur	2070
	7	Fatekhali	1101	Terapur	457
	8	Fatehpur	3139		
	9	Fishery Para	2119		

Union	Sl.No	Connected Villages	Population 2021 (Based on BBS 2011)	Disconnected Villages	Population 2021 (Based on BBS 2011)	
	10	Gayashpur	1079			
	11	Gotargaon	578			
	12	Kalshpur	1743			
	13	Kantakhalerpar	439			
	14	Kauatiki	798			
	15	Khulia	247			
	16	Maijbhag	1437			
	17	Masura	1182			
	18	Meherpur	1126			
	19	Murarkhir	618			
	20	Niaghoh	224			
	21	Naliuri	1620			
	22	Nurpur	444			
	23	Paschimbagh	1989			
	24	Rajapur	957			
	25	Sekhpara	334			
	26	Silimkhani	338			
	27	Sing Kapan	888			
	28	Tera Goli	234			
	29	Uttargaon	940			
		Sub Total		30814		6016
	Budbari Bazar	1	Ahai	426		
		2	Baghirghat	662		
		3	Baghirhat	561		
		4	Bahargram	1872		
		5	Baithakhai	514		
		6	Banagram	1164		
		7	Bani Gazi	1119		
		8	Bniagram	901		
9		Chandarpur	2627			
10		Chhatris	1293			
11		Hajipur	84			
12		Kali Dahar	510			
13		Kalijuri	2683			
14		Kalijuri Bagirghat	313			
15		Kargram	399			
16		Konagram	570			
17		Kotari Para	555			
18		Lama Chandarpur	1014			
	Sub Total		17267			
Dhak	1	Ahmidpur	143	Islampur	975	

Union	Sl.No	Connected Villages	Population 2021 (Based on BBS 2011)	Disconnected Villages	Population 2021 (Based on BBS 2011)
	2	Dattarail	5182	Kharda Para	3251
	3	Kanishail	6520		
	4	Lama Barakut	836		
	5	Misra Para	1418		
	6	Nagar	2634		
	7	Nishchinta Bejgao	736		
	8	Royghar	6310		
	9	Sunampur	2831		
	10	Upar Barakut	3534		
		Sub Total		30144	
Fulbari	1	Bagarkhala	695	Hajipur	4272
	2	Bara Kapan	2613	Hilalpur	1680
	3	Dakshin Maijbhag	2767		
	4	Dara	2798		
	5	Fulbari	5013		
	6	Kayestagram	2316		
	7	Kismat Maijbhag	2316		
	8	Machkapur	782		
	9	Masai Danti	309		
	10	Nij Tapa	635		
	11	Singpur	502		
	12	Uttar Maijbhag	1855		
	13	Uttarbagh	1381		
	Sub Total		23982		5952
Golapganj	1	Akadum	287		
	2	Buti Tikar	268		
	3	Chandanbhag	1081		
	4	Chhattish	1114		
	5	Chhay Tikar	536		
	6	Chowgharia	1601		
	7	Dakshin Gayeshpur	1165		
	8	Fazilpur	2575		
	9	Ghoga	372		
	10	Girda	917		
	11	Kaitikar	438		
	12	Manjurabad	420		
	13	Nij Sherpur	331		
	14	Pettiura	314		
	15	Royghar	124		
	16	Ruigar	689		
	17	Satkhanda	464		
	18	Sherpur Khalagram	3004		
	19	Tahirpur	664		

Union	Sl.No	Connected Villages	Population 2021 (Based on BBS 2011)	Disconnected Villages	Population 2021 (Based on BBS 2011)
	Sub Total		16364		
Lakshanaband	1	Adam Para	236	Daulatpur	262
	2	Bakhtiar Ghat	550	Nij Phulsaind	4448
	3	Bangaon	252	Purbo Phulsaind	2755
	4	Bidya Tikar	1424		
	5	Butra Para	1169		
	6	Chakrabarti Para	389		
	7	Chandi Para	424		
	8	Chapra Tila	32		
	9	Chita Lakshanabad	131		
	10	Chowdhury Para	971		
	11	Dakshinbhag Haor	612		
	12	Debpara	78		
	13	Deopara	589		
	14	Fultala	642		
	15	Hajipur	257		
	16	Hajrabari	61		
	17	Islamabad	842		
	18	Kandi Para	327		
	19	Kargaon	61		
	20	Lalpara	285		
	21	Lechra Para	407		
	22	Mahendra Tila	244		
	23	Main Para	416		
	24	Maltila	372		
	25	Mirer Chak	129		
	26	Mollah Tikar	601		
	27	Motherkha Para	729		
	28	Mukhitala	1298		
	29	Munshi Para	709		
	30	Muslim Para	338		
	31	Nama Para	220		
	32	Nichinta Bejgoan	535		
	33	Nilam Para	1411		
	34	Noagaon	94		
	35	Noagaon	94		
	36	Noai Dakshinbagh	1086		
	37	Pashchimtul	403		
	38	Purakaista Para	335		
	39	Puran Para	397		
	40	Puratan Para	199		
	41	Purbabagh	695		
	42	Sekh Para	283		

Union	Sl.No	Connected Villages	Population 2021 (Based on BBS 2011)	Disconnected Villages	Population 2021 (Based on BBS 2011)
	43	Taher Para	70		
	44	Ujan Para	278		
	45	Uttargram	1299		
	Sub Total		21974		7465
Lakshmi Pasha	1	Bausi	1464	Nimadal	2637
	2	Dara	463		
	3	Ghasibarni	876		
	4	Ghoshgaon	3516		
	5	Jagihap	1320		
	6	Jangalhata	1927		
	7	Kotwalpur	2384		
	8	Lakshmi Pasha	3975		
	9	Palpara	1316		
	10	Sanakpur	645		
	11	Shibhar	1838		
	12	Uttar Dakshinbagh	1540		
	Sub Total		21264		2637
Paschim Amura	1	Amunia	1661	Ghagua	1472
	2	Amura	2297	Upur Ghagua	1280
	3	Dampal	950		
	4	Dharabahar	3060		
	5	Islamtul	1004		
	6	Kadam Rasul	911		
		Shibpur	859		
		Shilghat	3091		
		Sundisail	1405		
	Sub Total		15238		2752
Shorifgonj	1	Kadipur	1244	Basantapur	1392
	2	Kadupur	1932	Rang Jiul	1239
	3	Khatkhai	3155	Islampur (Part)	2025
	4	Meherpur	2192	Kalikrishnapur	3739
	5	Punair Chak	2370	Nurjahanpur	562
	6	Rampur	59	Paniaga	1539
	7	Sener Chak	351		
	Sub Total		11303		10496
Uttar Bade Pasha	1	Alampur Mandartala	149	Alampur	398
	2	Amkona	3117	Chhalikona	1067
	3	Anandapur	254	Golapnagar	192
	4	Bade Pasha	1436	Jamira	283
	5	Bangla	2932	Mirer Chak	696
	6	Chairkandi	168	Pitalkuria	165
	7	Chhoyghari	564		
	8	Dakshin Alampur	285		

Union	Sl.No	Connected Villages	Population 2021 (Based on BBS 2011)	Disconnected Villages	Population 2021 (Based on BBS 2011)
	9	Debrai	65		
	10	Hajircona	484		
	11	Kalaim	407		
	12	Keatkona	1460		
	13	Khagail	2254		
	14	Khash	405		
	15	Konagaon	487		
	16	Mollar Chak	1209		
	17	Nohal	676		
	18	Satan Mardan	671		
	19	Supatek	1829		
	20	Uttar Alampur	886		
		Sub Total	19738		2801

5.3 MAP OF HARD-TO-REACH VILLAGES & PROPOSED ROADS

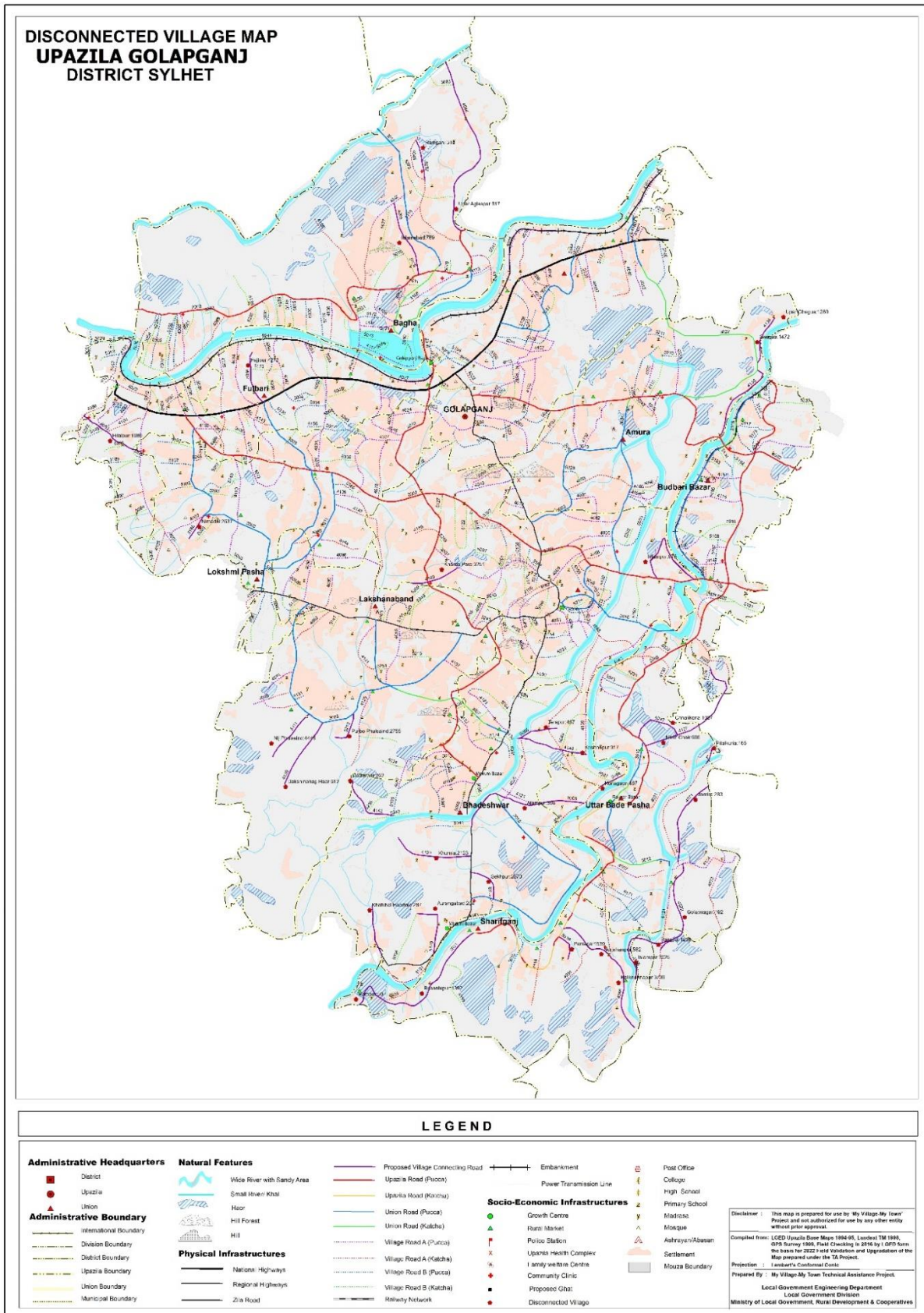


Figure 6: Upazila Map

6 DATA COLLECTION & ANALYSIS

The consultant team collected data from the field on Hard-to-Reach Villages. Data were collected from those villages including population, road alignment information (*type, length, condition*), travel time, a structure required on the alignment, potential Riverine routes that can be used for a multi-modal transport system etc. The data were then analyzed, categorized, and finally used to obtain a priority list along with a map (*Figure:5*) showing prioritized roads and Hard-to-Reach Villages. The proposed Riverine & road connectivity by the UE office have been discussed in this section.

6.1 PROPOSED ROADWAY FOR HARD-TO-REACH VILLAGES:

At present, roads are the most dominant mode of transportation. Most of the structures were built on the rivers to make road communication effective.

Table 3: Summary of the rural roads in the Upazila

Total Road Length of the Upazila (KM)	Paved Length (KM)	Unpaved Length (KM)	Length of unpaved roads of Hard-to-Reach Villages (KM)
689.48	381.65	307.82	74.08

6.1.1 PROPOSED ALL-WEATHER ROUTES:

There are 11 all-weather roads proposed to connect the HTRV within the Upazila. The road name, ID, road condition, and the length of the unpaved roads are as bellow;

Table 4: Proposed all-weather roads in the Upazila

SL No	Road Name	Road ID	Road Type by Surface Condition	Unpaved length (km)
1	RHD Road (Noya Moshjid) – Elahiganj Road (Rafipur Culvert)- Palpara - Hourabari - Kalaishah Mazar Road	691384059	All Weather	1.5
2	Borhanuddin Road (Abdul Ahad High School) - Islamamabad Road	691384095	All Weather	3
3	RHD Road (Khomia) - Pashchim paton Road.	691384120	All Weather	0.8
4	Shikpur Ferryghat - Upor Ghauga GPS Road	691384138	All Weather	4
5	Shikpur Ferryghat - Upor Ghauga GPS Road	691384138	All Weather	4
6	Sunampur Farigat - Islampur Village - Dhaka daokkin Beanibazar Road	691384143	All Weather	3
7	BNK High School - Khadapara Clinic - Deworbagha Khal Road.	691384149	All Weather	1.75
8	RHD Road (Shekpur Uttar) - Shekpur Shahi Edgha Mosque Road	691384158	All Weather	1.75
9	Hazipur Road - Girls School - RHD Road	691385086	All Weather	1

SL No	Road Name	Road ID	Road Type by Surface Condition	Unpaved length (km)
10	Purba Fulshind (Tarun Shangha) - Dakhinbagh Barjang Road.	691385212	All Weather	0.5
11	Kalakona Madrasha - Ramganj GPS Road.	691385232	All Weather	2

6.1.2 PROPOSED SUBMERSIBLE ROUTES:

There are 20 Submersible roads proposed to connect the HTRV within the Upazila. The road name, ID, road condition, and the length of the unpaved roads are as bellow;

Table 5: Proposed Submersible roads in the Upazila

Sl No	Road Name	Road ID	Road Type by Surface Condition	Unpaved length (km)
1	Mokam Bazar GC- Rakuar Bazar GC Road	691382006	Submersible	3.75
2	Sharifganj UP- Bashantapur Bazar Road	691383021	Submersible	4
3	Borhan Uddin Road-Agloshpur-Shutauli Ghat Road	691384044	Submersible	3.88
4	Fenchugonj BairagirbazarRoad (Kadipur) - Hakaluki Bazar (Kalikishnapur) Road	691384046	Submersible	2
5	Shantir Bazar - Gamira Road	691384071	Submersible	1
6	Shantir bazar- Golapnagar Road	691384072	Submersible	2
7	Fulshaind-Barzang Road	691384126	Submersible	0.5
8	Khagail - Kalaim - Bagla bazar Road	691384127	Submersible	3
9	Pashchimbagh Teraguli (Bhadeshwar) - Nowai Chalkgram (Kala Chander tilla) - Kamolgang Road.	691384142	Submersible	3
10	Purbabagh Bustand - Maherpur - 2 GPS-Krshnapur Road	691384148	Submersible	3
11	Ranggiol - Dakshin Islampur GPS Road	691384156	Submersible	3.5
12	Kushiara Dyle- Paniaga road	691385016	Submersible	1.5
13	RHD Road-Tarapur School Road	691385055	Submersible	1
14	Bhadeshwar-Konagoan Road.	691385084	Submersible	0.6
15	Fulshaind (Balushr bazar)-Latushah Road	691385111	Submersible	0.5
16	Fothepur- Dora Road (East side of saitahan Khal)	691385179	Submersible	1.55
17	Nimadol Khalpar- Jhapa Village Road	691385186	Submersible	1.5
18	Bagla Uttar Para (Gorosthan) - Shalikona Zila Parishad Bridge Road	691385247	Submersible	1.5

Sl No	Road Name	Road ID	Road Type by Surface Condition	Unpaved length (km)
19	Hourtola-Khatkal Village Road. L-1.00m, New ID	No ID	Submersible	1
20	Pitalkura Village Road	No ID	Submersible	1

6.1.3 PROPOSED ROADS FOR HARD-TO-REACH VILLAGES HAVING NO ID:

There are 2 roads proposed to connect the HTRV within the Upazila that have no ID yet. The road name, ID, and the length of the unpaved part are as bellow;

Table 6: Proposed roads for Hard-to-Reach Villages having No ID

Sl No	Road Name	Road ID	Unpaved length (km)
1	Hourtola-Khatkal Village Road. L-1.00m, New ID	No ID	1
2	Pitalkura Village Road	No ID	1

6.1.4 PRIORITY FOR ROAD DEVELOPMENT

Considering resources constraint, benefited a group of people, the time required to travel & road hierarchy, a priority list has been developed (*Annexure- 2*) for the HTRV (Hard to Reach Villages). The priority score has been determined according to following

Table 7: Considered weightage values for the prioritization

Criteria	Weightage
Population	30
Travel Time	20
Cost per 1000 Population	25
Road Type	25
Total=	100

It has been observed that there are a number of roads that bear the same score. In these cases, the minimum budget required for providing connectivity to thousands of people- will get more priority compared to more budget-required roads. The roads bearing ID will have higher priority than the roads without ID.

7 CONCLUSION & RECOMMENDATIONS

- Golapganj Upazila is located within the *Middle Meghna Flood Plain zone*. Golapganj is partly covered by 9 major haors/ wetlands and there exist Surma and Kushiara rivers flowing over the Upazila that dominate the ecosystem, and transport system of the Upazila. That are Shurma and Kushiara Rivers. During monsoons, these Rivers carry a huge volume of flood water. Though the Upazila has a number of Rivers, Riverine transport is available only along the Shurma and Kushiara River.
- As the Upazila is heavily flooded during monsoon, rural roads and structures are highly vulnerable in this Upazila.
- The Upazila has a total number of 33 Hard-to-Reach Villages. To develop rural connectivity, there are proposals for both all-weather and submersible roads. This report contains a list of roads with their priority. The priority has been determined based on Population, Travel Time, Cost per KM/1000 people & Road Hierarchy.
- This Upazila is highly vulnerable to disasters. Due to climate change, vulnerability is getting intense. The year 2022 has shown catastrophic flood that was not seen over the last 18 years (*last in 2004 similar to 1998 & 1988*). Therefore, it is highly recommended to study the road alignments before going for investment.
- Case-by-case design of roads in this Upazila considering different aspects such as exposure to floods, erosion etc. is highly recommended. A special study regarding the road and structure design of the Upazila Golapganj in Sylhet district is highly recommended.

ANNEXURE - 1

DETAILS OF GROWTH CENTER & HATBAZAR

Sl. No.	Union	Market Name	Market Category (GC=Growth Center, HB=Hat Bazar)	Market Listed? (Yes/ No)	Market Category (General/Special/Collection center)	Market Category (Wholesale/Retail/both)	Hat Day	Chandina Viti (Number)	Chandina Viti (Land)	Chandina Viti (Shop)	Land Area (Acre)			Lease/Khas Collecti on BDT (2020)	Lease/Khas Collecti on BDT (2019)
											Toha	Khas	Private		
1	Badhubari	Budhbari bazar	HB	Yes	General Market	Wholesale	1	0	0.00	0	0.00	0.15	0.00	23000	18300
2	Badhubari	Chandarpur bazar	HB	Yes	General Market	Wholesale	2	0	0.00	0	0.00	0.18	0.00	14750	14000
3	Badhubari	Banigram bazar	HB	Yes	General Market	Wholesale	1	0	0.00	0	0.00	0.00	0.00	0	0
4	Badhubari	Bhorgram bazar	HB	Yes	General Market	Wholesale	7	0	0.00	0	0.00	0.29	0.00	0	0
5	Bagha	Pargana bazar	HB	Yes	General Market	Wholesale	7	0	0.00	0	0.49	0.98	0.00	35478	30943
6	Bagha	Battortal bazer	HB	Yes	General Market	Wholesale	7	0	0.00	0	0.00	0.00	0.00	0	0
7	Bhadeshwar	Mirganj bazar	GC	Yes	General Market	Wholesale	1	16	0.08	16	0.26	0.53	0.00	31000	30000
8	Bhadeshwar	Mokum bazar	GC	Yes	General Market	Wholesale	7	0	0.00	4	0.00	0.06	0.00	8500	5000
9	Bhadeshwar	Badeswar mokam bazar	HB	No	General Market	Wholesale	7	0	0.00	0	0.00	0.00	0.00	0	0
10	Bhadeshwar	Naya bazar	HB	Yes	General Market	Wholesale	7	0	0.00	0	0.00	0.00	0.00	0	0
11	Bhadeshwar	Purbabhag bazar	HB	Yes	General Market	Wholesale	7	0	0.00	0	0.00	0.37	0.00	0	0
12	Bhadeshwar	Kaliganj bazar	HB	Yes	General Market	Wholesale	1	0	0.00	0	0.00	0.13	0.00	0	0
13	Dhaka Dakshin	Dhaka-dakshin bazar	GC	No	General Market	Wholesale	2	0	0.00	0	0.00	1.66	0.00	0	0
14	Fulbari	Khoiruganj bazar	HB	Yes	General Market	Wholesale	7	9	0.02	9	0.07	0.19	0.00	70500	50333
15	Fulbari	Boitiker bazar	HB	Yes	General Market	Wholesale	7	10	0.04	10	0.27	0.54	0.00	5200	5200
16	Fulbari	Goibir bazar	HB	Yes	General Market	Wholesale	1	0	0.00	0	0.00	0.12	0.00	0	0

Sl. No.	Union	Market Name	Market Category (GC=Growth Center, HB=Hat Bazar)	Market Listed? (Yes/ No)	Market Category (General/Special/ Collection center)	Market Category (Wholesale/Retail/both)	Hat Day	Chandina Viti (Number)	Chandina Viti (Land)	Chandina Viti (Shop)	Land Area (Acre)			Lease/ Khas Collecti on BDT (2020)	Lease/ Khas Collecti on BDT (2019)
											Toha	Khas	Private		
17	Fulbari	Nasaganj bazar	HB	Yes	General Market	Wholesale	1	0	0.00	0	0.00	0.08	0.00	0	0
18	Fulbari	Panch mile bazer	HB	Yes	General Market	Wholesale	7	0	0.00	0	0.00	0.00	0.00	0	0
19	Golapganj	Golapganj bazar (m.a)	GC	Yes	General Market	Wholesale	7	0	0.00	0	0.00	0.91	0.00	0	0
20	Golapganj	Karkhana bazar	HB	Yes	General Market	Wholesale	1	10	0.03	10	0.08	0.15	0.00	0	0
21	Golapganj	Ranaping bazar	HB	Yes	General Market	Wholesale	1	12	0.02	12	0.04	0.08	0.00	0	0
22	Golapganj	Chowghari bazer	HB	No	General Market	Wholesale	7	0	0.00	0	0.00	0.00	0.00	0	0
23	Golapganj	Kadamtali bazar (m.a)	HB	Yes	General Market	Wholesale	1	0	0.00	0	0.00	0.19	0.00	0	0
24	Lakshanaband	Naw purkayestha bazar	HB	Yes	General Market	Wholesale	2	19	0.04	19	0.22	0.44	0.00	1140500	1047675
25	Lakshanaband	Puran purkayestha bazar	HB	Yes	General Market	Wholesale	2	13	0.03	13	0.20	0.40	0.00	1061000	981765
26	Lakshanaband	Choudhury bazar	HB	Yes	General Market	Wholesale	2	12	0.03	12	0.19	0.38	0.00	54400	28000
27	Lakshanaband	Komolgonj bazar	HB	Yes	General Market	Wholesale	7	9	0.03	9	0.31	0.62	0.00	2600	500
28	Lakshanaband	Kurir bazar	HB	Yes	General Market	Wholesale	1	14	0.04	14	0.09	0.17	0.00	0	500
29	Lakshanaband	Baluchar bazar	HB	Yes	General Market	Wholesale	7	0	0.00	0	0.00	0.60	0.00	0	0
30	Lakshipasa	Batulganj bazar	HB	Yes	General Market	Wholesale	1	0	0.00	0	0.00	0.06	0.00	0	0
31	Lakshipasa	Dewaner bazar	HB	Yes	General Market	Wholesale	7	0	0.00	0	0.00	0.70	0.00	0	0
32	Laxmi Pasha	Jangalhata bazer	HB	Yes	General Market	Wholesale	7	0	0.00	0	0.00	0.00	0.00	0	0
33	Laxmi Pasha	Konachar bazer	HB	Yes	General Market	Wholesale	7	0	0.00	0	0.00	0.00	0.00	0	0
34	Laxmi Pasha	Laxmipasa bazer	HB	Yes	General Market	Wholesale	7	0	0.00	0	0.00	0.00	0.00	0	0
35	Laxmi Pasha	Nimadal mokam bazer	HB	Yes	General Market	Wholesale	7	0	0.00	0	0.00	0.00	0.00	0	0

Sl. No.	Union	Market Name	Market Category (GC=Growth Center, HB=Hat Bazar)	Market Listed? (Yes/ No)	Market Category (General/Special/ Collection center)	Market Category (Wholesale/Retail/both)	Hat Day	Chandina Viti (Number)	Chandina Viti (Land)	Chandina Viti (Shop)	Land Area (Acre)			Lease/ Khas Collecti on BDT (2020)	Lease/ Khas Collecti on BDT (2019)
											Toha	Khas	Private		
36	Paschim Amura	Amnia bazar	HB	Yes	General Market	Wholesale	1	9	0.20	9	0.07	0.13	0.00	9000	7500
37	Paschim Amura	Amura bazer	HB	Yes	General Market	Wholesale	7	0	0.00	0	0.00	0.00	0.00	0	0
38	Paschim Amura	Kadam rosulpur bazar	HB	Yes	General Market	Wholesale	7	0	0.00	0	0.00	0.83	0.00	0	0
39	Sharifganj	Muslimgonj bazar	HB	Yes	General Market	Wholesale	2	0	0.00	0	0.21	0.21	0.00	1000	1000
40	Sharifganj	Basantopur bazer	HB	No	General Market	Wholesale	7	0	0.00	0	0.00	0.00	0.00	0	0
41	Sharifganj	Kalikrishnopur bazer	HB	No	General Market	Wholesale	7	0	0.00	0	0.00	0.00	0.00	0	0
42	Sharifganj	Meherpur bazer	HB	No	General Market	Wholesale	7	0	0.00	0	0.00	0.00	0.00	0	0
43	Sharifganj	Sarif gonj bazar	HB	Yes	General Market	Wholesale	2	0	0.00	0	0.00	0.47	0.00	0	0
44	Uttar Bade Pasha	Rakuar bazar	GC	Yes	General Market	Wholesale	7	0	0.00	15	0.32	0.64	0.00	545416	450000
45	Uttar Bade Pasha	Shantir bazar	HB	Yes	General Market	Wholesale	2	0	0.00	17	0.16	0.32	0.00	2000	2000
46	Uttar Bade Pasha	Asirganj bazer	HB	Yes	General Market	Wholesale	7	0	0.00	0	0.00	0.00	0.00	0	0
47	Uttar Bade Pasha	Bagla bazer	HB	Yes	General Market	Wholesale	7	0	0.00	0	0.00	0.00	0.15	0	0
48	Uttar Bade Pasha	Deputi bazar	HB	Yes	General Market	Wholesale	2	0	0.00	0	0.00	0.37	0.00	0	0

ANNEXURE - 2

PRIORITY LIST FOR ROAD DEVELOPMENT

SL No	Upazila	Connecting Union	Connecting Village	Village Population BBS 2011	Population 2021 (Based on BBS 2011)	Road Name	Road ID	Road Type	Road Type by Surface Condition	Total Road Length	Paved length (Km)	HBB Length (km)	Unpaved length (Km)	Total Road Length to be Developed	HBB + Unpaved in (km)	Approx. Cost of Road (Lac)	Structure/ Gap (Meter)	Cost of Structure (in Lac)	Total Cost (in lac) (Roads + Structures)	Population /KM (10÷17)	Tentative Budget/1000 Population (in lac)	Travel Time (in min)	Weightage for Population	Weightage for Travel Time	Weightage for Cost per 1000 Pop	Weightage for Road Type	Total Weightage	Priority
1	Golapganj	Sharifganj	Nurjahanpur, Kalikrishnapur	9104	10431	Fenchugonj Bairagirbazar Road (Kadipur) - Hakaluki Bazar (Kalikishnapur) Road	691384046	VRA	Submersible	2.90		0.90	2.00	2.90	2.90	522.00	300.00	2700.00	3222.00	3597	308.89	43.50	30	10	25	12	77	1
2	Golapganj	Sharifganj	Basantapur	3383	3876	Sharifganj UP-Bashantapur Bazar Road	691383021	UNR	Submersible	4.00			4.00	4.00	4.00	720.00	300.00	2700.00	3420.00	969	882.33	60.00	20	16	20	20	76	2
3	Golapganj	Paschim Amura	Ghagua	1472	1687	Shikpur Ferryghat - Upor Ghauga GPS Road	691384138	VRA	All Weather	4.50	0.50		4.00	4.50	4.00	480.00	0.00	0.00	480.00	422	284.60	60.00	18	16	25	12	71	3
4	Golapganj	Paschim Amura	Upar Ghagua	1280	1467	Shikpur Ferryghat - Upor Ghauga GPS Road	691384138	VRA	All Weather	4.50	0.50		4.00	4.50	4.00	480.00	0.00	0.00	480.00	367	327.29	60.00	18	16	25	12	71	4
5	Golapganj	Fulbari	Hajipur	4272	4895	Hazipur Road - Girls School - RHD Road	691385086	VRB	All Weather	1.00			1.00	1.00	1.00	120.00	0.00	0.00	120.00	4895	24.52	15.00	20	10	25	12	67	5
6	Golapganj	Lakshanaband	Purbo Phulsaind	2755	3157	Purba Fulshind (Tarun Shangha) - Dakhinbagh Barjang Road.	691385212	VRB	All Weather	1.00		0.50	0.50	1.00	1.00	120.00	0.00	0.00	120.00	3157	38.02	15.00	20	10	25	12	67	6
7	Golapganj	Bhadeshwar	Khumia	2123	2432	RHD Road (Khomia) - Pashchim paton Road.	691384120	VRA	All Weather	1.30	0.50		0.80	1.30	0.80	96.00	0.00	0.00	96.00	3041	39.47	12.00	20	10	25	12	67	7
8	Golapganj	Lakshanaband	Nij Phulsaind	4448	5096	Fulshaind (Balushr bazar)-Latushah Road	691385111	VRB	Submersible	1.20		0.70	0.50	1.20	1.20	216.00	0.00	0.00	216.00	4247	42.38	18.00	20	10	25	12	67	8
9	Golapganj	Dhaka Dakshin	Kharda Para	3251	3725	BNK High School - Khadapara Clinic - Deworbagha Khal Road.	691384149	VRA	All Weather	1.75			1.75	1.75	1.75	210.00	0.00	0.00	210.00	2128	56.38	26.25	20	10	25	12	67	9
10	Golapganj	Bhadeshwar	Sehpur	2070	2372	RHD Road (Shekpur Uttar) - Shekpur Shahi Edgha Mosque Road	691384158	VRA	All Weather	1.75			1.75	1.75	1.75	210.00	0.00	0.00	210.00	1355	88.54	26.25	20	10	25	12	67	10
11	Golapganj	Lakshmi Pasha	Nimadal	2637	3021	Nimadol Khalpar-Jhapa Village Road	691385186	VRB	Submersible	1.50			1.50	1.50	1.50	270.00	0.00	0.00	270.00	2014	89.36	22.50	20	10	25	12	67	11
12	Golapganj	Sharifganj	Islampur	2025	2320	Ranggiol - Dakshin Islampur GPS Road	691384156	VRA	Submersible	3.50			3.50	3.50	3.50	630.00	0.00	0.00	630.00	663	271.53	52.50	20	10	25	12	67	12
13	Golapganj	Fulbari	Hilalpur	1680	1925	RHD Road (Noya Moshjid) - Elahiganj Road (Rafipur Culvert)- Palpara - Hourabari - Kalaishah Mazar Road	691384059	VRA	All Weather	1.50			1.50	1.50	1.50	180.00	0.00	0.00	180.00	1283	93.51	22.50	18	10	25	12	65	13
14	Golapganj	Sharifganj	Paniaga	1539	1763	Kushiara Dyle-Paniaga road	691385016	VRB	Submersible	1.50			1.50	1.50	1.50	270.00	0.00	0.00	270.00	1176	153.12	22.50	18	10	25	12	65	14
15	Golapganj	Dhaka Dakshin	Islampur	975	1117	Sunampur Farigat - Islampur Village - Dhaka daokkin Beanibazar Road	691384143	VRA	All Weather	3.00			3.00	3.00	3.00	360.00	0.00	0.00	360.00	372	322.26	45.00	18	10	25	12	65	15
16	Golapganj	Sharifganj	Rangjiul	1239	1420	Ranggiol - Dakshin Islampur GPS Road	691384156	VRA	Submersible	3.50			3.50	3.50	3.50	630.00	0.00	0.00	630.00	406	443.79	52.50	18	10	25	12	65	16
17	Golapganj	Uttar Bade Pasha	Alampur	398	456	Mokam Bazar GC-Rakuar Bazar GC Road	691382006	UZR	Submersible	3.75			3.75	3.75	3.75	675.00	0.00	0.00	675.00	122	1480.22	56.25	15	10	15	25	65	17

*** Cost for Roads & Structures; (All Weather Rd= 120 lac/km, Submersible= 180 lac/km, Structure= 9 lac/m)
 *** Weightage Values; (Population = 30, Travel Time= 20, Cost per KM/1000 people= 25, Road Hierarchy= 25)

SL No	Upazila	Connecting Union	Connecting Village	Village Population BBS 2011	Population 2021 (Based on BBS 2011)	Road Name	Road ID	Road Type	Road Type by Surface Condition	Total Road Length	Paved length (Km)	HBB Length (km)	Unpaved length (Km)	Total Road Length to be Developed	HBB + Unpaved in (km)	Approx. Cost of Road (Lac)	Structure/ Gap (Meter)	Cost of Structure (in Lac)	Total Cost (in lac) (Roads + Structures)	Population /KM (10 ⁻¹⁷)	Tentative Budget/1000 Population (in lac)	Travel Time (in min)	Weightage for Population	Weightage for Travel Time	Weightage for Cost per 1000 Pop	Weightage for Road Type	Total Weightage	Priority
18	Golapganj	Bagha	Islamabad	769	881	Borhanuddin Road (Abdul Ahad High School) - Islamabad Road	691384095	VRA	All Weather	4.40		1.40	3.00	4.40	4.40	528.00	0.00	0.00	528.00	200	599.26	66.00	15	16	20	12	63	18
19	Golapganj	Bagha	Upar Aglaspur	817	936	Borhan Uddin Road- Agloshpur-Shutauli Ghat Road	691384044	VRA	Submersible	5.08		1.20	3.88	5.08	5.08	914.40	0.00	0.00	914.40	184	976.83	76.20	15	16	20	12	63	19
20	Golapganj	Lakshanaband	Dakshinbhag Haor	612	701	Fulshaind-Barzang Road	691384126	VRA	Submersible	1.00	0.50		0.50	1.00	0.50	90.00	0.00	0.00	90.00	1402	128.35	7.50	15	10	25	12	62	20
21	Golapganj	Bhadeshwar	Konagaon	487	558	Bhadeshwar-Konagoan Road.	691385084	VRB	Submersible	0.60			0.60	0.60	0.60	108.00	0.00	0.00	108.00	930	193.55	9.00	15	10	25	12	62	21
22	Golapganj	Bhadeshwar	Terapur	457	524	RHD Road-Tarapur School Road	691385055	VRB	Submersible	1.50	0.50		1.00	1.50	1.00	180.00	0.00	0.00	180.00	524	343.77	15.00	15	10	25	12	62	22
23	Golapganj	Bhadeshwar	Khatkhal Haortola	287	329	Hourtola-Khatkal Village Road. L-1.00m, New ID	No ID	VRB	Submersible	1.00			1.00	1.00	1.00	180.00	0.00	0.00	180.00	329	547.39	15.00	15	10	20	12	57	23
24	Golapganj	Uttar Bade Pasha	Jamira	283	324	Shantir Bazar - Gamira Road	691384071	VRA	Submersible	1.00			1.00	1.00	1.00	180.00	0.00	0.00	180.00	324	555.13	15.00	15	10	20	12	57	24
25	Golapganj	Bagha	Ramganj	316	362	Kalakona Madrasha - Ramganj GPS Road.	691385232	VRB	All Weather	2.00			2.00	2.00	2.00	240.00	0.00	0.00	240.00	181	662.87	30.00	15	10	20	12	57	25
26	Golapganj	Uttar Bade Pasha	Pitalkuria	165	189	Pitalkura Village Road	No ID	VRA	Submersible	1.00			1.00	1.00	1.00	180.00	0.00	0.00	180.00	189	952.13	15.00	15	10	20	12	57	26
27	Golapganj	Uttar Bade Pasha	Chhalikona	1067	1223	Bagla Uttar Para (Gorosthan) - Shalikona Zila Parishad Bridge Road	691385247	VRB	Submersible	1.50			1.50	1.50	1.50	270.00	150.00	1350.00	1620.00	815	1325.12	22.50	18	10	15	12	55	27
28	Golapganj	Bhadeshwar	Aurangabad	204	234	Fothepur- Dora Road (East side of saitahan Khal)	691385179	VRB	Submersible	1.55			1.55	1.55	1.55	279.00	0.00	0.00	279.00	151	1193.66	23.25	15	10	15	12	52	28
29	Golapganj	Uttar Bade Pasha	Mirer Chak, Pitalkuria	861	987	Khagail - Kalaim - Bagla bazar Road	691384127	VRA	Submersible	3.00			3.00	3.00	3.00	540.00	100.00	900.00	1440.00	329	1459.70	45.00	15	10	15	12	52	29
30	Golapganj	Bhadeshwar	Krishnapur	317	363	Purbabagh Bustand - Maherpur - 2 GPS-Krshnapur Road	691384148	VRA	Submersible	3.00			3.00	3.00	3.00	540.00	0.00	0.00	540.00	121	1486.76	45.00	15	10	15	12	52	30
31	Golapganj	Uttar Bade Pasha	Golapnagar	192	220	Shantir bazar-Golapnagar Road	691384072	VRA	Submersible	2.30		0.30	2.00	2.30	2.30	414.00	0.00	0.00	414.00	96	1881.94	34.50	15	10	12	12	49	31
32	Golapganj	Lakshanaband	Daulatpur	262	300	Pashchimbagh Teraguli (Bhadeshwar) - Nowai Chalkgram (Kala Chander tilla) - Kamolgang Road.	691384142	VRA	Submersible	3.00			3.00	3.00	3.00	540.00	100.00	900.00	1440.00	100	4796.97	45.00	15	10	10	12	47	32

*** Cost for Roads & Structures; (All Weather Rd= 120 lac/km, Submersible= 180 lac/km, Structure= 9 lac/m)
*** Weightage Values; (Population = 30, Travel Time= 20, Cost per KM/1000 people= 25, Road Hierarchy= 25)