



GOVERNMENT OF THE PEOPLE'S REPUBLIC OF BANGLADESH  
MINISTRY OF LOCAL GOVERNMENT, RURAL DEVELOPMENT AND CO-OPERATIVES  
**Local Government Engineering Department (LGED)**  
Agargaon, Sher-E-Bangla Nagar, Dhaka-1207

**Final Report on Study-03**  
**'My Village -My Town' -Technical Assistance Project**  
“Feasibility Study for Rural Connectivity including Multi-Modal Transport  
System in Char and Haor Areas”

**Bishwanath Upazila, Sylhet**



---

July, 2022

# CONTENTS

---

<b>GLOSSARY .....</b>	<b>i</b>
<b>ABBREVIATIONS .....</b>	<b>ii</b>
<b>Background .....</b>	<b>iii</b>
<b>1 Description of the Upazila .....</b>	<b>1</b>
1.1 Geography and Demography .....	1
1.2 Education Features.....	1
1.3 Rural Road Communications.....	1
1.4 Agriculture, Food Production, and Fisheries .....	1
1.5 Growth Centre and Hatbazar.....	2
<b>2 Location of the Upazila .....</b>	<b>3</b>
<b>3 Approach &amp; Methodology.....</b>	<b>4</b>
3.1 Study Team Composition.....	4
3.2 Study Area.....	4
3.3 Database Review and Analysis .....	4
3.4 Prioritization Criteria of Sub-projects .....	5
3.5 Weightage Distribution for Prioritization.....	5
3.6 Mapping Hard-to-reach Villages & Population.....	6
3.7 Wrap Up Meeting.....	6
3.8 Validation Workshop.....	6
3.9 National Workshop.....	7
<b>4 Description of Wetlands.....</b>	<b>8</b>
4.1 Distribution of the Haors/ Wetlands.....	8
4.2 Haor/ Wetland Category.....	9
4.3 Bio-Ecological Characteristics .....	10
<b>5 Rural Road Connectivity to the Villages .....</b>	<b>11</b>
5.1 Summary of the Village Connectivity.....	11
5.2 Villages and their connectivity – Union level.....	12
5.3 Map of Hard-to-Reach Villages & Proposed Roads.....	22
<b>6 Data Collection &amp; Analysis .....</b>	<b>23</b>
6.1 Proposed Roadway for Hard-to-Reach Villages:.....	23
6.1.1 Proposed All-Weather Routes:.....	23
6.1.2 Proposed Roads for Hard-to-Reach Villages Having No ID: .....	25
6.1.3 Priority for Road Development .....	25
<b>7 Conclusion &amp; Recommendations .....</b>	<b>26</b>
<b>Annexure - 1.....</b>	<b>27</b>
<b>Annexure - 2.....</b>	<b>30</b>

### ***List of Figures***

Figure 1: Upazila Location Map .....	3
Figure 2: Prioritization indicators & their weightage values .....	6
Figure 3: Haor Distribution Map .....	8
Figure 4: Haor Category Map. ....	9
Figure 5: Bio Ecological Characteristics Map.....	10
Figure 6: Upazila Map .....	22

### ***List of Tables***

Table 1: Total villages in the unions and their connectivity.....	11
Table 2: Union-wise connected & Hard-to-Reach Villages and their population.....	12
Table 3: Summary of the rural roads in the Upazila.....	23
Table 4: Proposed all-weather roads in the Upazila .....	23
Table 5: Proposed roads for Hard-to-Reach Villages having No ID.....	25
Table 6: Considered weightage values for the prioritization.....	25

## GLOSSARY

---

**Hard-to-reach Villages** mean in the Study those villages that are not connected by any paved road with the respective Upazila HQ and/or Union Parishad, and to the nearest economic activity hub and social service centres. The following explanations are important for the concept of hard-to-reach villages.

- In haor areas, Villages connected with submersible roads dry season and connected with Riverine/haor routes in the monsoon season have been considered accessible and excluded from hard-to-reach villages.
- Within Upazila, Villages that need a bridge to connect have not been considered hard-to-reach villages.
- In the case of island Upazilas, villages that are accessible with paved roads from Upazila HQ have been considered accessible and excluded from hard-to-reach villages.
- In the case of villages that are connected with HBB (Herring-Bone-Bond) or Brick flat soling routes have been considered hard-to-reach villages

**Mauza** Mauza is normally the geographical expression of a unit of landmass for revenue settlement and revenue collection, whereas, the village is a human settlement within a Mauza with a strong social bond. Within a Mauza there could be more than one village.

**Union** Bangladesh has 3-tiers local government systems: District, Upazila, and Union. Union is the lowest level of local government below Upazila Parishad

**Upazila** Sub-district; the third level of government administration below division and district.

**Hat** Synonym of Bazar or market

**Walking Trail** means in the Study the village pathway or access used for walking by commuters, in most cases does not have gazetted or established or commonly used alignment, and to the most, passable by bicycle or motorbike. These village trails are not passable by motorized jeeps or mini trucks or emergency service vehicles or not even any three-wheelers.

**Unpaved Roads** have no pavement or surface material. They are usually earthen roads.

**Vulnerability** is the human dimension of risk that is defined as conditions determined by physical, social, economic, environmental, political, cultural, and institutional factors or processes that increase the likelihood of an individual or a community to the impacts of shocks and hazards.

**Climate-Resilience** is expressed as the ability of a community to resist, absorb, adapt to and recover better from the impacts of disasters like floods and landslides in a sustainable way.



## ABBREVIATIONS

---

ADB	– Asian Development Bank
BBS	– Bangladesh Bureau of Statistics
BC	– Bitumen Carpeting
DatEx	– Data Expert (Pvt.) Limited
DECL	– Delight Engineers and Construction Ltd.
DoE	– Department of Environment
DPHE	– Department of Public Health Engineering
DPP	– Development Project Proposal
FGD	– Focus Group Discussion
GIS	– Geographic Information System
GOB	– Government of Bangladesh
HBB	– Herring-Bone-Bond
HQ	– Headquarter
HTRV	– Hard-to-Reach Village
JV	– Joint Venture
KII	– Key Informant Interview
LGD	– Local Government Division
LGED	– Local Government Engineering Department
LGI	– Local Government Institute
MVMT	– My Village My Town
NGO	– Non-Government Organization
PD	– Project Director
PMO	– Project Management Office
RCC	– Reinforced Concrete
RHD	– Roads & Highways Department
SDGs	– Sustainable Development Goals
TA	– Technical Assistance Project
UE	– Upazila Engineer
UNDP	– United Nations Development Programme
UNO	– Upazila Nirbahi Officer
UNR	– Union Road
UP	– Union Parishad
UPZ	– Upazila Road
VRA	– Village Road A
VRB	– Village Road B



## BACKGROUND

---

### Context of the Project

The Government of Bangladesh made massive plans to ensure equitable development around the country. Under this development philosophy, the GoB requirements are to reduce the rural-urban divide to foster developmental benefits for all citizens. As part of this, the government declared an election manifesto on the eve of the national parliament election 2018 uniting the theme **Bangladesh on the March Towards Prosperity** aiming at transforming Bangladesh into a developed nation by 2041. Under this, villages have been considered the basic unit of prosperity for building a developed nation.

This firm commitment was declared following the light of the philosophy of the Father of the Nation Bangabandhu Sheikh Mujibur Rahman to build ‘Sonar Bangla’ (Golden Bangla) through inclusiveness, balanced, and development for all.

Following the philosophy of the Father of the Nation, the government declared its election manifesto 2018 titled ‘My Village-My Town’- Extension of Modern Civic Amenities in Every village. The Local Government Division under the Ministry of Local Government, Rural Development and Cooperatives has prepared a comprehensive work plan to make this election commitment a reality. The Local Government Division with its two agencies, the Local Government Engineering Department (LGED) and Department of Public Health Engineering (DPHE) has undertaken a technical assistance project named ‘My Village-My Town’- Technical Assistance Project. Under this project, 36 studies and 30 guidelines are being developed on eight thematic components related to the mandate of the Local Government Division. The eight thematic components are Rural Communications, Growth Centre and Hat Bazar, Rural Water Supply and Sanitation, Rural Waste Management, Community Space and Recreation Facilities, Upazila Masterplan, Rural Housing and Capacity building of Upazila and Union Parishad. Besides this, a coordination framework is being developed among the other ministries involved in the implementation of the My Village-My Town election manifesto. It is notable to mention that a coordination committee has been formed comprising 21 ministries to implement the program in a coordinated way under the leadership of the Minister of Local Government, Rural Development, and Co-operatives.

### Context of the Report

This report is a part of the study of the component ‘Rural Connectivity’. Rural connectivity is the basic of all amenities in the villages. Rural connectivity works as the conduit that can supply a number of bare necessities such as access to the market, health, education, employment etc. In general, Bangladesh has remarkable progress in rural connectivity. Instead of this, a number of regions of the country are geographically sensitive where rural connectivity is not easy and has a lot of challenges. These regions are -Haor, Beel, Hills, Chars, islands etc. The people residing in these regions have considerably low access to civic amenities compared to other villages of the country. Therefore, the study and plan development of improvement of rural connectivity is one of the important assignments of the technical assistance project. The project undertook an Upazila-based special study on the villages of these geographically sensitive regions that are mentioned before.

This report contains the rural connectivity status and priority plan of the **Bishwanath** Upazila of **Sylhet** District.





# **1 DESCRIPTION OF THE UPAZILA**

---

## **1.1 GEOGRAPHY AND DEMOGRAPHY**

The geographical area of Bishwanath Upazila is 213.16 square kilometers and has 8 unions, 123 mauzas, and 174 villages. The Upazila is 17km away from the district headquarters of Sylhet. Bishwanath is partly covered by 3 major haors/ wetlands and there exist 3(three) rivers flowing over the Upazila. The total population of Upazila is 232573 of which 115763 are male and 116810 females, the total number of households are 37993 and the average household size is 6.1 with a population density of 1091 (as per population census 2011).

## **1.2 EDUCATION FEATURES**

According to the information of the relevant local government offices, there are 100 government & 30 non-government primary schools in the Upazila. On the other hand, Bishwanath has 29 non-government with only government high schools, 3 private colleges, and 15 madrasahs. The literacy rate for the Upazila is 45.1% as per BBS 2011.

## **1.3 RURAL ROAD COMMUNICATIONS**

Bangladesh scored in the rural accessibility index at around 87 percent among South Asian and some other African countries. Generally, the people of Bangladesh get all-weather within 2 kilometers adjacent to their living places. But the feature of rural road communications in Bishwanath Upazila is contrasted. There are many villages, disconnected from the developed paved road network that brings huge suffering for the people of the villages. The total rural road network of Bishwanath is 589.06 km and out of which, 286.13 km are paved and 302.93 km earthen.

## **1.4 AGRICULTURE, FOOD PRODUCTION, AND FISHERIES**

Though the aggregate (coarse sand, stone chips & stone) business is the main source of income for the inhabitants, agriculture too has major importance for the economy of the people of Bishwanath. There are 52320 acres of arable land in Upazila. In the fiscal year 2010-11, the Rice production was 7468, 26135 & 17601 metric tons for Aus, Aman & Boro seasons respectively. The Upazila also produced 2850 metric tons of Potato in the same fiscal year 2010-11. A notable quantity of vegetables is also produced here in this Upazila.

According to the BBS (2011) data, Bishwanath has 2966 Acre of haor, pond & dighee that produced 430 metric tons of fish. There also exist 28 poultry & 9 dairy farms.

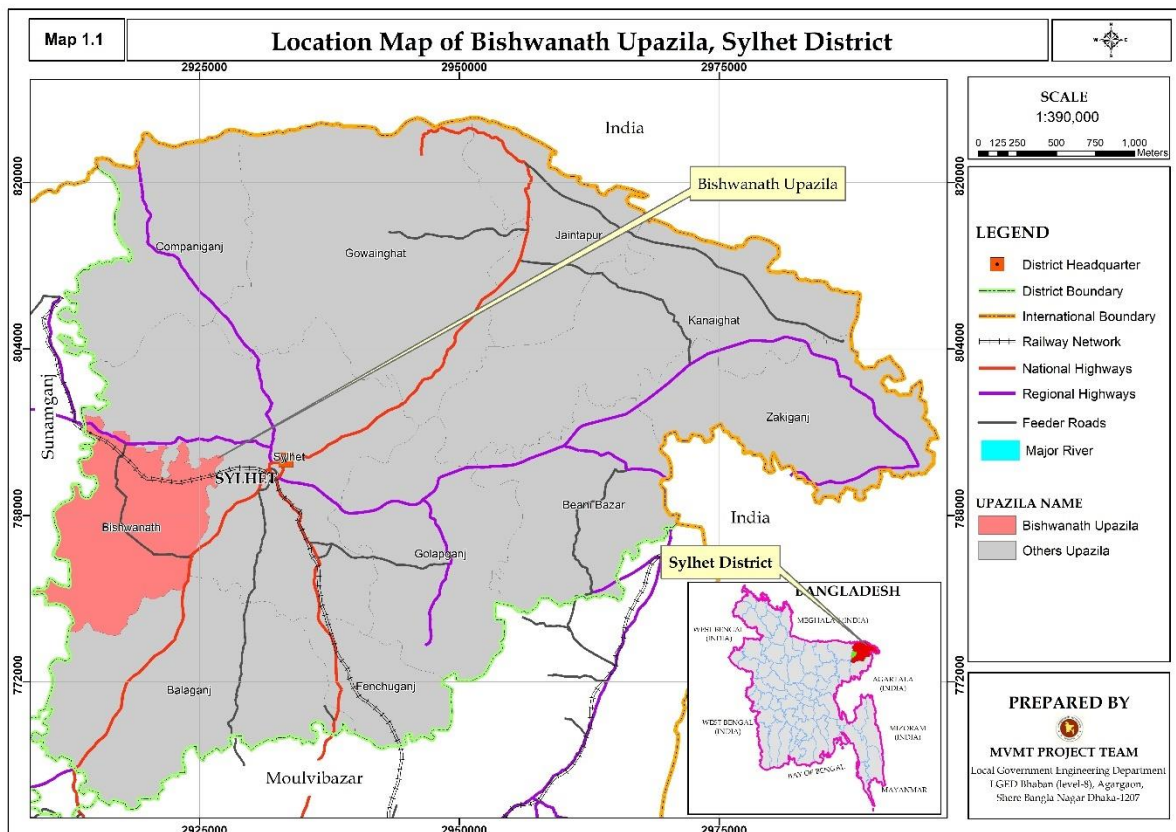
All the agricultural products are adequate to meet the demand of the Upazila and surpluses are sold outside of Bishwanath.

## **1.5 GROWTH CENTRE AND HATBAZAR**

Growth Centre and Rural Hatbazar are one of the main centers of the rural economy. Hatbazar is like the heart of the development of the rural economy. Rural Hatbazar plays a role in increasing production and creating employment impacting the supply chain of agriculture and non-agriculture products. There are 36 Hatbazar and 4 growth centers in Upazila. The structural development of Hatbazar and its growth is pivotal to boosting the rural economy. Details of the growth center & hatbazar of the Upazila have been attached in **Annexure-1**.

## 2 LOCATION OF THE UPAZILA

Bishwanath Upazila of Sylhet district in the North-Eastern part of the country. The location has been shown on the map. The Upazila is situated just beside the Sylhet Sadar Upazila. It causes flash floods during monsoon coming from uphill Meghalaya, resulting in waterlogging within the haor basin. Flash floods induce severe impacts on both the built and the natural environment. The effects of flash floods can be catastrophic and show extensive diversity, ranging from damages to buildings and infrastructure to impacts on vegetation, human lives, and livestock.



*Figure 1: Upazila Location Map*

### 3 APPROACH & METHODOLOGY

---

#### 3.1 STUDY TEAM COMPOSITION

A team consisting of Senior Rural Road Infrastructure Specialist, Associate Rural Infrastructure Specialist, and Assistant Engineer engaged by the Project Management Office (PMO) conducted the study. On the other hand, A team consisting of Deputy Team Leader cum Rural Infrastructure Engineer, Junior GIS expert, and Junior Engineer engaged by consulting firm (datEx & DECL JV) conducted the study. A participatory approach to review the database and identify priority transport infrastructure needs (‘sub-projects’) was instrumental. At the stakeholder consultation meeting held in each district, the database was reviewed, and priority needs were identified and mapped working together with the LGI representatives and LGED technical team. LGED and LGI representatives surveyed each Upazila for the collection of detailed observations and validations of the proposed priority needs.

#### **Stakeholder Consultation Meeting**

- Hard-to-reach Village Database and database of sub-projects reviewed
- Prioritization of sub-projects for each Upazila with LGI and LGED representatives
- Hard-to-reach villages and priority sub-projects mapped in the LGED GIS Map

#### 3.2 STUDY AREA

The study was conducted in 72 Upazilas of haor areas, 3 Upazilas of Beel areas, 8 Upazilas of Char areas, and 4 Upazilas of Island areas during the period from December 2021 to June 2022. Apart from this, the PMO team conducted the study in 50 Upazilas of Haor areas, and the rest of the Upazilas of Haor, Beel, Char, and Island areas are conducted by the consulting firm team. The Upazila technical staff of LGED supported in organizing stakeholder consultation meetings and in database review and mapping the Hard-to-reach villages and population during this study period. They also supported the field work and authentication check by visits to the sub-projects in their respective Upazila and looking at the feasibility of some proposed sub-projects from technical, social, and environmental perspectives.

#### 3.3 DATABASE REVIEW AND ANALYSIS

The study applied both qualitative (e.g., focused group discussions and in-depth case study fieldwork) and quantitative (structured and semi-structured interviews) approaches and methods in reviewing and conducting fieldwork in all the haor areas to understand the need and impact of rural accessibility in remote village contexts. The most applied methods in the reviewing and conducting fieldwork were:

- Key Informants Interview (KII)
- Focus Group Discussion (FGD)
- Case Study for authentication check and individual sub-project feasibility study.

- ❖ Review the Hard-to-reach village database at the ‘Stakeholder consultation meeting’ participated by local government representatives such as the UP chairman and members, Upazila chairman, vice-chairman, and UNO.
- ❖ FGD and KII were conducted using a checklist. Composition in the FGD included local community people: male and female, teachers, local farmers, traders, and students depending on availability.
- ❖ KIIs of Union Chairman, Upazila chairman, UNO male and female, and teacher depending on availability.
- ❖ Authentication and feasibility check by visits to the sub-projects reviewed and listed for the 40 selected case study unions under the MVMT project.
- ❖ Survey with GPS machine and Google apps in collecting Hard-to-reach village locations, landmarks, chainage at gaps, village road at sections vulnerable to land erosion damage, narrow existing width or sharp slope location.

### **3.4 PRIORITIZATION CRITERIA OF SUB-PROJECTS**

Prepare a priority list of sub-projects by Upazilas that includes gazette ID roads and non-gazette roads (No ID) with attributes like name and number of villages and population. The criteria used in the prioritization are described below.

- Population, travel time needed from the remotest villages to the Upazila HQ, road type, and cost per km per 1000 population are the indicators weighted giving a value in a formula.
- Priority is given to single connection with no alternative transport road and multi-modal transport route to connecting the villages with Upazila HQ and Union Parishad, growth centre and important markets and social service centres; villages with a higher population and travel time get higher weightage;
- Priority is given to roads, ghats, and collection points that will facilitate agricultural diversification, reduce transportation costs, ensure a fair price and create a farm and non-farm employment and income;
- Priority is given to roads development and inland waterways dredging that will enable year-round mobility of the general public and villagers, in particular, health workers, teachers and students, and tourists to facilitate tourism development, quality education, and better health service in the district and region;
- Special priority is given to sub-projects of roads, Riverine routes/inland waterways that will mainstream deprived communities living in the hard-to-reach villages;
- Identified sub-projects with more cost-effectiveness than others using per km per 1000 population cost for each sub-project;
- Every sub-project(s) is to be climate-resilient, sustainable, and cost-effective.

### **3.5 WEIGHTAGE DISTRIBUTION FOR PRIORITIZATION**

The approaches and methodologies of the Study for reviewing database and prioritization are synthesized in the diagrams below, noting that the proposed sub-projects of roads in the databases are prioritized based on weightage calculated on the set criteria (as shown in the diagram). People’s demands and local needs are reflected in the prioritization which was

determined by the Study, working together with LGI representatives and LGED field-level technical staff at the stakeholder consultation meetings held in each Upazila.

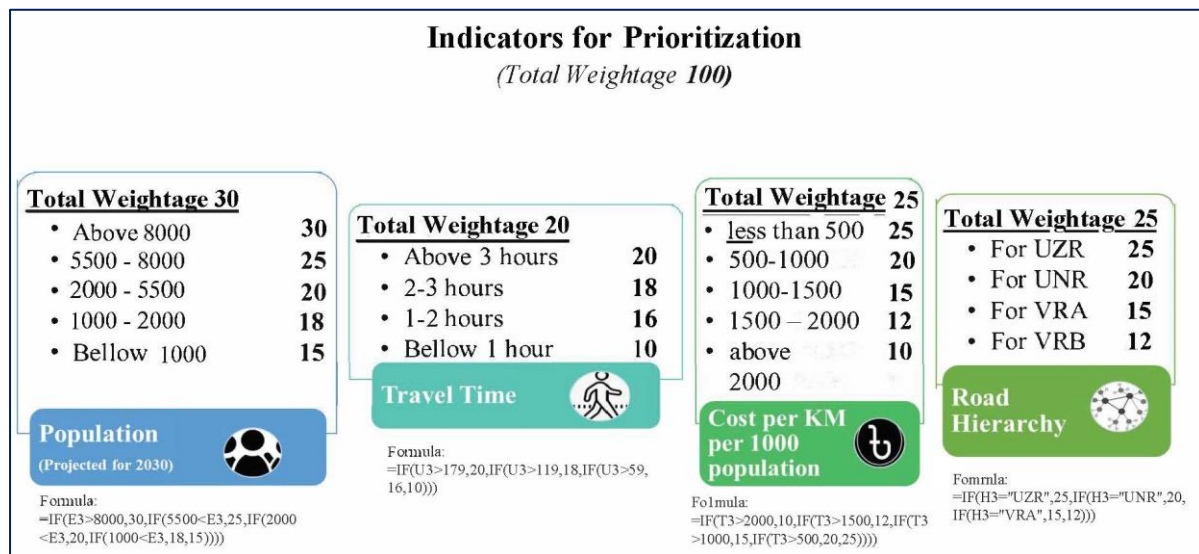


Figure 2: Prioritization indicators & their weightage values

### 3.6 MAPPING HARD-TO-REACH VILLAGES & POPULATION

- With the active support of LGED technical staff, first, draw every priority listed MVMT roads and Hard-to-reach villages on the LGED GIS map in presence of the union Chairman and members who know the sub-project and are the best. This was not in scale but approximation was reached by triangulation. Then digitized on screen using GIS, validate with Google map, and checked with data and information on important features and points collected using GPS during field visits.
- There were challenges in deciding on starting node and/or zero chainage of the non-gazette (No ID) road because not all non-gazette sub-projects were visited and surveyed by the Study team.

### 3.7 WRAP UP MEETING

Wrap up the fieldwork progress at each district holding a meeting chaired by the Executive Engineer, LGED, and participated by all Upazila engineers of the respective district. On completion of the fieldwork, this was conducted to share issues and updates to the district Executive Engineer for feedback and action, as necessary.

### 3.8 VALIDATION WORKSHOP

On completion of data analysis and drafting of the database and mapping, the Study outputs were shared with the respective districts and Upazilas for final review. The later validation workshop was held at the respective district on the Draft Report to share and validate the findings. This was participated by the LGED Division, District and Upazila officials, and technical staff.

### **3.9 NATIONAL WORKSHOP**

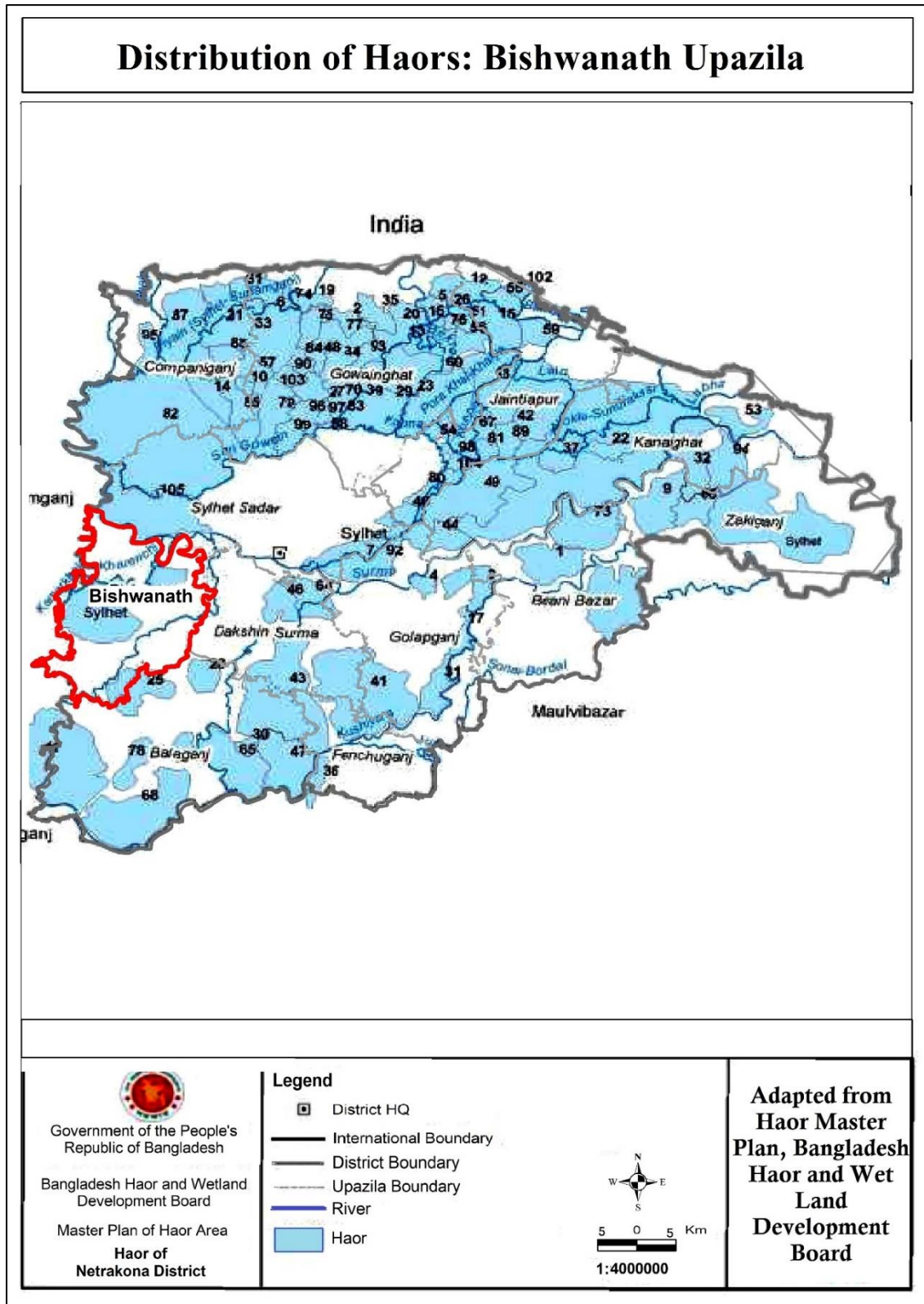
The Draft Report is finalized, incorporating comments received from the validation workshop, LGED head office staff, and the PMO office. A National Level workshop was held at LGED HQ for sharing and disseminating the results of the Study.



## 4 DESCRIPTION OF WETLANDS

### 4.1 DISTRIBUTION OF THE HAORS/ WETLANDS

The Upazila has a large portion of flash flood zone that covers almost 40-50% of its land area. The roads within the flood zone become inundated during monsoon, which requires attention to take relevant measures during road construction and maintenance.



## 4.2 HAOR/ WETLAND CATEGORY

All the areas of the Upazila are under floodplain. Therefore, road or other infrastructure development in this Upazila does not have any major environmental consequences compared to the Haor Area.

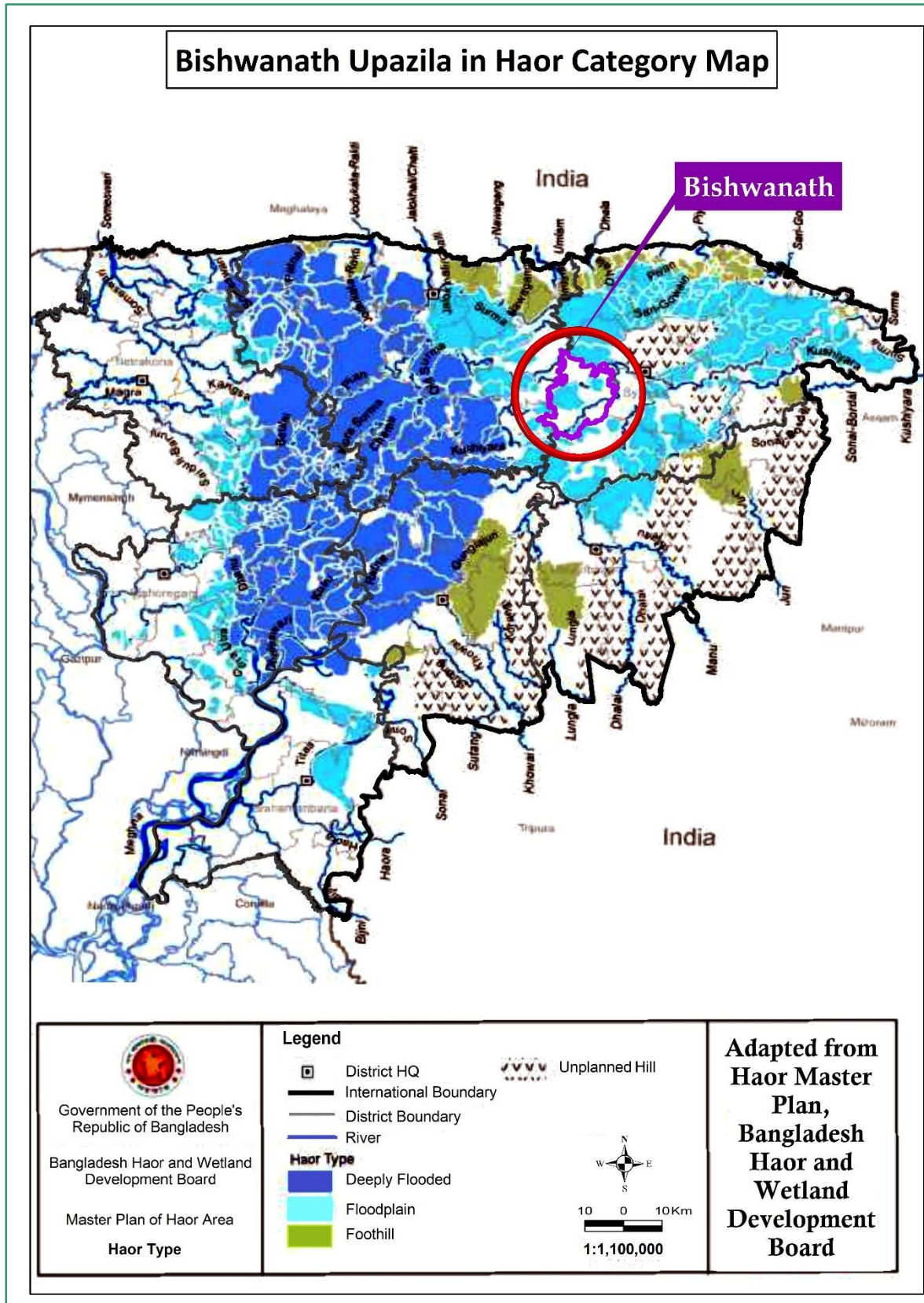


Figure 4: Haor Category Map.

### 4.3 BIO-ECOLOGICAL CHARACTERISTICS

The Bio-ecological characteristics map of the Upazila has been shown below. The map shows that it is under Sylhet Hills.

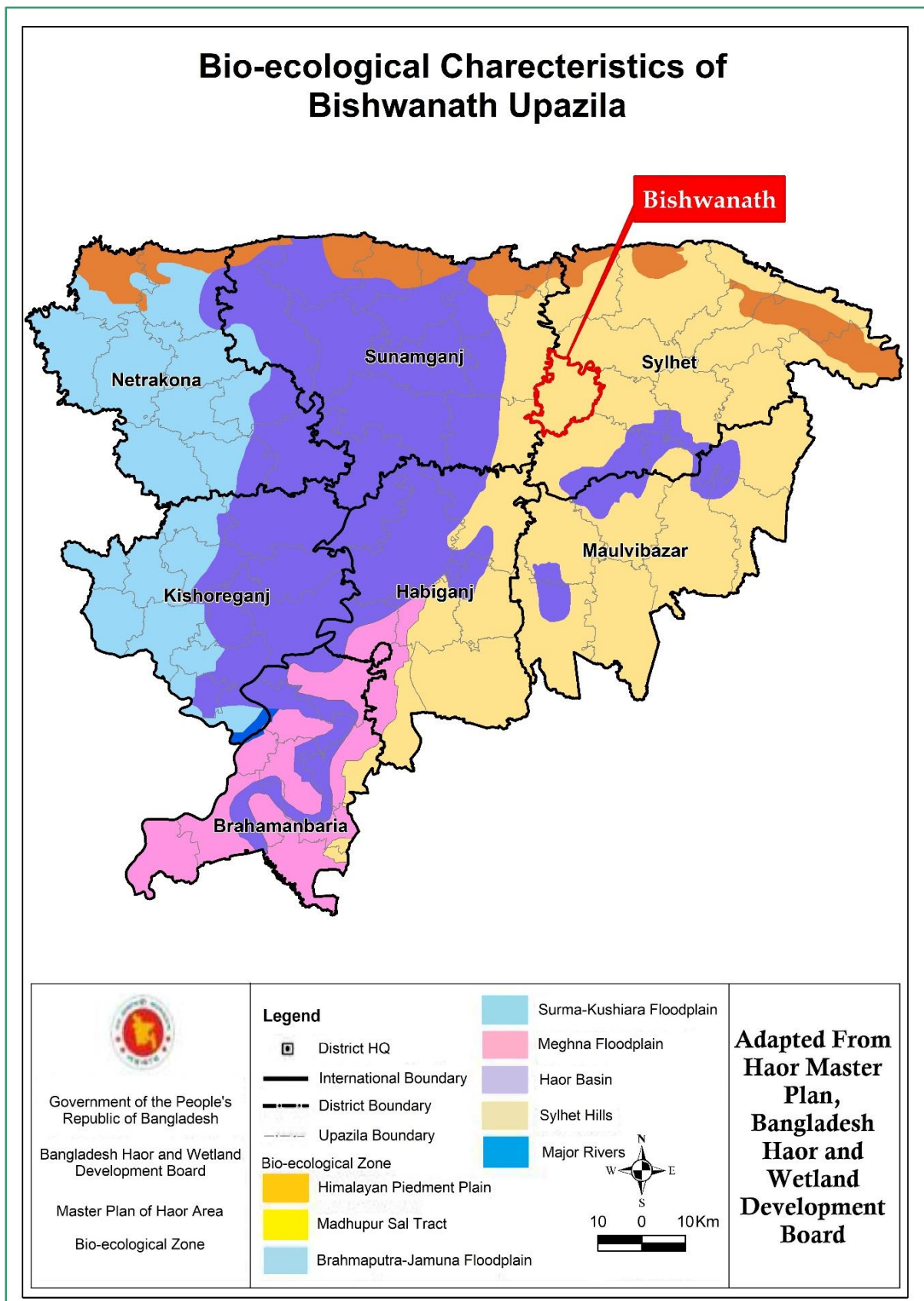


Figure 5: Bio Ecological Characteristics Map

## 5 RURAL ROAD CONNECTIVITY TO THE VILLAGES

---

### 5.1 SUMMARY OF THE VILLAGE CONNECTIVITY

The feature of rural road communications in Bishwanath Upazila is contrasted. Out of 435 villages, 29 are disconnected from the developed paved road network which brings huge suffering for the people of those villages. The total rural road network of Bishwanath is 589.06 km and out of which, 286.13 km are paved and 302.93 km earthen.

*Table 1: Total villages in the unions and their connectivity*

SL No	Union	No of Villages	Connected Villages	Hard-to-Reach Villages
1	Alankari	45	39	6
2	Bishwanath	75	68	7
3	Dasghar	30	26	4
4	Daulatpur	51	48	3
5	Deokalas	49	49	0
6	Khazanchigaon	78	73	5
7	Lama Kazi	62	59	3
8	Rampasha	45	44	1
<b>Total</b>		<b>435</b>	<b>406</b>	<b>29</b>

## 5.2 VILLAGES AND THEIR CONNECTIVITY – UNION LEVEL

The consultant arranged a meeting at the Upazila conference room with and all the UP Chairman & their secretaries. The team interviewed a representative of each union and collected data about the HTRV.

*Table 2: Union-wise connected & Hard-to-Reach Villages and their population*

Union	Sl. No	Connected Villages	Population 2021 (Based on BBS 2011)	Hard-to-Reach Villages	Population 2021 (Based on BBS 2011)
Alankari	1	Agarkandi	117	Pechi Khurma	1486
	2	Alamnagar	831	Peshkar Gaon	326
	3	Alankari	1170	Pitakara	557
	4	Baghmatpur	54	Sabsen	668
	5	Bara Khurma	1884	Sabsen Tengra	1262
	6	Baratala	601	Uttar Bara Khurma	1010
	7	Betsandi	942		
	8	Bhabangaon	839		
	9	Chan Kharigaon	418		
	10	Chanpur	538		
	11	Dargaon	177		
	12	Farhadpur	565		
	13	Guran	281		
	14	Hyderpur	465		
	15	Hyedergaon	153		
	16	Kamalpur	847		
	17	Kararpara	208		
	18	kirpakhli	278		
	19	Laltek	1443		
	20	Madhabpur	275		
	21	Manukupe	478		
	22	Mirgaon Khurma	458		
	23	Munshirgaon	572		
	24	Padunapur	490		
	25	Purba Jania	1591		
	26	Rahabari Peshkargaon	222		
	27	Rajibari	166		
	28	Ramair Chak	680		
	29	Ramdhana	1403		
	30	Rampur	1323		
	31	shakhergaon	125		
	32	shekhergaon	690		
	33	Sutarpara	210		
	34	Talibpur	62		
	35	Teghari	138		
	36	Tek Kamalpur	289		
	37	Tengra	1351		

Union	Sl. No	Connected Villages	Population 2021 (Based on BBS 2011)	Hard-to-Reach Villages	Population 2021 (Based on BBS 2011)
	38	Tukarkandi	265		
		<b>Sub Total</b>	<b>22599</b>		<b>5309</b>
<b>Bishwanath</b>	1	Abakrapur	192	Biddaya Kapon	222
	2	Alimpur	347	Gandharkapan	334
	3	Atapur	468	Jahargaon	287
	4	Baraigaon	138	Paschim Sasram	589
	5	Bayanpur	374	Saruala	794
	6	Bhatshala	202	Subirkhal	527
	7	Bidaisulpani	694	Uttar Musalia	1935
	8	Bishwanath	1916		
	9	Bishwnath Puran Bazar	993		
	10	Biswanath Bazar	1349		
	11	Biswanath Station	852		
	12	Bogshail	508		
	13	Buksail/ harikalash	433		
	14	Chowdhurygaon	451		
	15	Dakshin Mirerchar	549		
	16	Daksin Musalia	1534		
	17	Dandapanipur	394		
	18	Dharmada	657		
	19	Dharmada Noagaon	504		
	20	Dhitpur	1249		
	21	Durgakapon	333		
	22	Durgapur	525		
	23	Ekabim	253		
	24	Goalgaon	168		
	25	Gobindopur	301		
	26	Hamidpur	371		
	27	Ikbapur	204		
	28	Ilamergaon	288		
	29	Janaya	1916		
	30	Janaya Noagaon	763		
	31	Kanaipur	120		
	32	Karikona	1308		
	33	Khaiyakhair	209		
	34	Khaya Khayer Bazar	98		
	35	Maharampur	67		
	36	Modhutala	64		
	37	Mohammedpur	309		
	38	Mojlish Bugsail	515		
	39	Mollargaon	489		
	40	Muktirgaon	814		
	41	Noya serajpur	226		

Union	Sl. No	Connected Villages	Population 2021 (Based on BBS 2011)	Hard-to-Reach Villages	Population 2021 (Based on BBS 2011)
	42	Paschim Chandsar Kapon	673		
	43	Paschim Mandal Kapon	255		
	44	Purbo Chandsar Kapon	762		
	45	Purbo Mandal Kapon	244		
	46	Purbo Sasram	784		
	47	Rahaimpur	194		
	48	Rajapur	597		
	49	Rajnagar	1545		
	50	Rampur	108		
	51	Sabragaon	203		
	52	Sadalpur	161		
	53	Sadurgram	721		
	54	Sajan Barat	102		
	55	Saranishi	44		
	56	Sarishpur	173		
	57	Satrish	326		
	58	Senargaon	351		
	59	Serajpur	640		
	60	Shaijirgaon	635		
	61	Sharishpur	997		
	62	Taj Maharam	267		
63	Tajpur	175			
64	Tatikona	454			
65	Tengra	90			
66	Uttar Mirerchar	689			
		<b>Sub Total</b>	<b>34335</b>		<b>4688</b>
Dasghar	1	Aushpur	544	Baruni	1963
	2	Baishghar	1402	Dhararai	107
	3	Ballavpur	766	Mandaruka	876
	4	Bausi	1312	Sabajpur	641
	5	Bhatipara	160		
	6	Bisnupur	227		
	7	Chand Bharang	2351		
	8	Chikagaon	310		
	9	Dashghar	1454		
	10	Dashghar Noagaon	1438		
	11	Ekarain	119		
	12	Ghagutia	375		
	13	Isabdaud	148		
	14	Jibanpur	479		
	15	Kachrakeli	167		
	16	Kaibarta Kapon	72		
	17	Kamargaon	531		

Union	Sl. No	Connected Villages	Population 2021 (Based on BBS 2011)	Hard-to-Reach Villages	Population 2021 (Based on BBS 2011)
	18	Karmargaon	185		
	19	Kashimpur	1068		
	20	Loharsapur	503		
	21	Nachuni	543		
	22	Nekhiler Noagaon	626		
	23	Salia	603		
	24	Sambu Madan	406		
	25	Saruil	400		
	26	Roykeli	285		
		<b>Sub Total</b>	<b>16474</b>		<b>3587</b>
Daulatpur	1	Atpara	336	Dash Paika	2632
	2	Baoshen	109	Dhanpur	139
	3	Bara Dubhag	726	Noagaon-1	255
	4	Bhatipara	668		
	5	Bubrajan	196		
	6	Chandpur	763		
	7	Charchandi	1408		
	8	Chatish	2340		
	9	Chithanyanagar	799		
	10	Dakshin Daulatpur	1002		
	11	Dakshin Karpara	358		
	12	Dakshin Satpara	609		
	13	Dakshin Singraoli	457		
	14	Dash Paika Bazar	26		
	15	Daulatpur	808		
	16	Durja Kapon	1394		
	17	Guahari	1048		
	18	Habra	340		
	19	Hashnaji	538		
	20	Islampur	83		
	21	Jagadishpur	410		
	22	Kadipur	132		
	23	Kajirgaon	437		
	24	Kaliteka	365		
	25	Khanpara	210		
	26	Lejkata	194		
	27	Majhgaon	1039		
	28	Miah Janergaon	403		
	29	Mirergaon	292		
	30	Moulavigaon	594		
	31	Natun Habra Bazar	2		
	32	Noagaon-2	348		
	33	Parwa	281		



Union	Sl. No	Connected Villages	Population 2021 (Based on BBS 2011)	Hard-to-Reach Villages	Population 2021 (Based on BBS 2011)
	34	Paschim Sekergaon	261		
	35	Paschimgaon	955		
	36	Puran Habra Bazar	80		
	37	Purbo Karpara	519		
	38	Purbo Sekergaon	729		
	39	Ramjanpur	407		
	40	Ramkrisnapur	215		
	41	Sekergaon	171		
	42	Senbari	36		
	43	Singerkanch Bazar	379		
	44	Teghari	165		
	45	Ujaijuri	419		
	46	Uttar Daulatpur	833		
	47	Uttar Satpara	661		
	48	Uttar Singerkanch	719		
		<b>Sub Total</b>	<b>25264</b>		<b>3026</b>
Deokalas	1	Agnupara	356		
	2	Ailakandi	88		
	3	Alapur	611		
	4	Aluapara	389		
	5	Bagir Chak	121		
	6	Bajitpur	217		
	7	Bara Kapon	412		
	8	Dakshin satpur	476		
	9	Dalipatli	264		
	10	Datta	263		
	11	Daudpur	568		
	12	Deokalas	152		
	13	Deokalas Kalijuri	212		
	14	Dhopakhola	681		
	15	Ekatara	150		
	16	Eklabari	34		
	17	Jagatpur	501		
	18	Jamalpur	60		
	19	Kadipur	476		
	20	Kajkabad	529		
	21	Kalijuri-1	984		
	22	Kalijuri-2	248		
	23	Kalisha	128		
	24	Kamalpur	449		
	25	Kandigram	692		
	26	Kharjam	1029		
	27	Khayerghat	263		

Union	Sl. No	Connected Villages	Population 2021 (Based on BBS 2011)	Hard-to-Reach Villages	Population 2021 (Based on BBS 2011)
	28	Kunarai	899		
	29	Madanpur	203		
	30	Maijgaon	252		
	31	Maijpur	657		
	32	Majanpur	114		
	33	Majlishpur	242		
	34	Manakandi	101		
	35	Naya Satpur	866		
	36	Niyamatpur	326		
	37	Noagaon	264		
	38	Noahati	78		
	39	Perurgaon	154		
	40	Puran Satpur	1341		
	41	Sadhurgaon	245		
	42	Sadpur	126		
	43	Samajpur	199		
	44	Sardarpur	267		
	45	satmanpur	391		
	46	Sayedpur	567		
	47	Sufipur	184		
	48	Tatalpur	95		
	49	Tikirband	64		
		<b>Sub Total</b>	<b>17988</b>		
Khazanchigaon	1	Amargaon	225	Bandhua	1063
	2	Aowlarpur	239	Haripur	663
	3	Austakeari	264	Mohammedpur	229
	4	Babunagar	153	Pakichiri	382
	5	Bade Kabilpur	222	Sreemukh	4
	6	Bahadurmala	111		
	7	Baonpur	1635		
	8	Bhabanipur	188		
	9	Bhatgaon	112		
	10	Bhatpara	389		
	11	Bholagonj	855		
	12	Chandipur	59		
	13	Chandragram	746		
	14	Choto Dighali	613		
	15	Dakshin Noagaon	542		
	16	Deepband	593		
	17	Dwippur	28		
	18	Ekakalyan	132		
	19	Enayetpur	188		
	20	Ganaighar	494		

Union	Sl. No	Connected Villages	Population 2021 (Based on BBS 2011)	Hard-to-Reach Villages	Population 2021 (Based on BBS 2011)
	21	Ghashigaon	273		
	22	Gobindanagar	311		
	23	Gumragul	437		
	24	Hamder Chak	506		
	25	Islamabad	30		
	26	Kabilpur	583		
	27	Kamalpur	89		
	28	Kandigaon	579		
	29	Karma Kalapati	680		
	30	Kayestagram	140		
	31	Khalpar	344		
	32	Kishorepur	343		
	33	Kumarpara	297		
	34	Kurikhala	420		
	35	Madanpur	431		
	36	Madhabpur	401		
	37	Mirgaon/ soleman nagar	142		
	38	Mufter Bazar	7		
	39	Murauna	132		
	40	Mushedor	434		
	41	Nawbaghi	435		
	42	Nischintapur	83		
	43	Noagaon	806		
	44	Noapara Joynagar	456		
	45	Noarai	620		
	46	Noorpur	71		
	47	Nurpur	83		
	48	Palgaon	242		
	49	Paschim Krishnapur	516		
	50	Paschim Noagaon	144		
	51	Paschim Paharpur	276		
	52	Paschim Raghpur	147		
	53	Phulchandi	105		
	54	Piarai	410		
	55	Pratappur	634		
	56	Prayag Mahal	626		
	57	Purbo Krishnapur	375		
	58	Purbo Paharpur	241		
	59	Purbo Prayag Mahal (Hossai)	775		
	60	Rahimpur	1945		
	61	Rajgandha Bazar	4		
	62	Rajnagar	140		
	63	Rauthergaon	538		

Union	Sl. No	Connected Villages	Population 2021 (Based on BBS 2011)	Hard-to-Reach Villages	Population 2021 (Based on BBS 2011)
	64	Roypur	664		
	65	Shah Sahebergaon	179		
	66	Shibarkhala	263		
	67	Sonapur	365		
	68	Tabalpur	374		
	69	Talibpur	358		
	70	Tegharia	497		
	71	Telikona	1162		
	72	Tilakpur	193		
	73	Timaighar	274		
		<b>Sub Total</b>	<b>28368</b>		<b>2341</b>
Lama Kazi	1	Akilpur	681	Khujar Para	724
	2	Atapur	188	Rajapur	776
	3	Badurmala	1331	Shahpur/ Pathangaon	588
	4	Basirpur	559		
	5	Bhurki	1376		
	6	Bidaypati	196		
	7	Bulchandergaon	19		
	8	Dattapur	1249		
	9	Dekapur	6		
	10	Dewn Nagar	118		
	11	Dighali	281		
	12	Dokanipara	648		
	13	Duariagaon	365		
	14	Durlab Farid	734		
	15	Ekagaon/ Purba Barergaon	644		
	16	Ekanida	34		
	17	Gadyapur	84		
	18	Hailkari	70		
	19	Haira Pashpati Datta	20		
	20	Hajarigaon	605		
	21	Hajrah	349		
	22	Hamjapur	297		
	23	Hikuragaon	172		
	24	Isabpur	1007		
	25	Islampur	232		
	26	Jagirala	502		
	27	Kalimullahpur	463		
	28	Kazirgaon	744		
	29	Keshabpur	479		
	30	Khajanchigaon	474		
	31	Konaura Noagaon	611		
	32	Kotiria	503		

Union	Sl. No	Connected Villages	Population 2021 (Based on BBS 2011)	Hard-to-Reach Villages	Population 2021 (Based on BBS 2011)	
	33	Krishnapur	341			
	34	Lamakazi	232			
	35	Madhabpur	931			
	36	Mahtabpur	1613			
	37	Makargaon	239			
	38	Mandabaz	625			
	39	Mangalsree	476			
	40	Mirpur	379			
	41	Mirzagaon	2957			
	42	Mollargaon	287			
	43	Munshirgaon	432			
	44	Natullapur	181			
	45	Noagaon	295			
	46	Paschim Birergaon	60			
	47	Pathan Chak	346			
	48	Rasulpur	361			
	49	Sahebnagar	528			
	50	Sakarikona	706			
	51	Sangrai	317			
	52	Saudargaon	300			
	53	Shirajpur	54			
	54	Sonapur	629			
	55	Subalpur/ Barbongaon	438			
	56	Sutpur	800			
	57	Tapigonj	239			
	58	Tilakpur	284			
			<b>Sub Total</b>	<b>29091</b>		<b>2088</b>
	Rampasha	1	Anerpur	1243	Agun Shasan	217
2		Atghar	437			
3		Azidnagar	580			
4		Bagamatpur	127			
5		Bairagir Bazar	434			
6		Bairagirgaon	803			
7		Bajrakona	60			
8		Bishghar	416			
9		Bishwanathergaon	630			
10		Bubrajan	441			
11		Chak Ramprasad	948			
12		Chandraudy	206			
13		Charalkona/ Rahman nagar	1204			
14		Dashdhal	567			
15		Dhalia Para	3058			
16		Gangadarpur	125			

Union	Sl. No	Connected Villages	Population 2021 (Based on BBS 2011)	Hard-to-Reach Villages	Population 2021 (Based on BBS 2011)
	17	Gargaon	562		
	18	Gorashail	157		
	19	Hashan Nagar	532		
	20	Ilamergaon	35		
	21	Jalkar Chhaiya	3107		
	22	Jamserpur	3955		
	23	Jamserpur/Kunaurah	1374		
	24	Janaia	144		
	25	Kadipur	595		
	26	Katli Para	1837		
	27	Kaupur	337		
	28	Konapara	1232		
	29	Manoharpur	639		
	30	Mujrai Para	458		
	31	Musalia	227		
	32	Naodhar	1585		
	33	Noagaon	640		
	34	Nursingpur	702		
	35	Panchgari	256		
	36	Pathakain	493		
	37	Pitakara	592		
	38	Purangaon	629		
	39	Purba Makhakgaon	1163		
	40	Ramchadrapur	590		
	41	Rampasha	2550		
	42	Sreedharpur	543		
	43	Sreepur	584		
		<b>Sub Total</b>	<b>36797</b>		<b>217</b>

### 5.3 MAP OF HARD-TO-REACH VILLAGES & PROPOSED ROADS

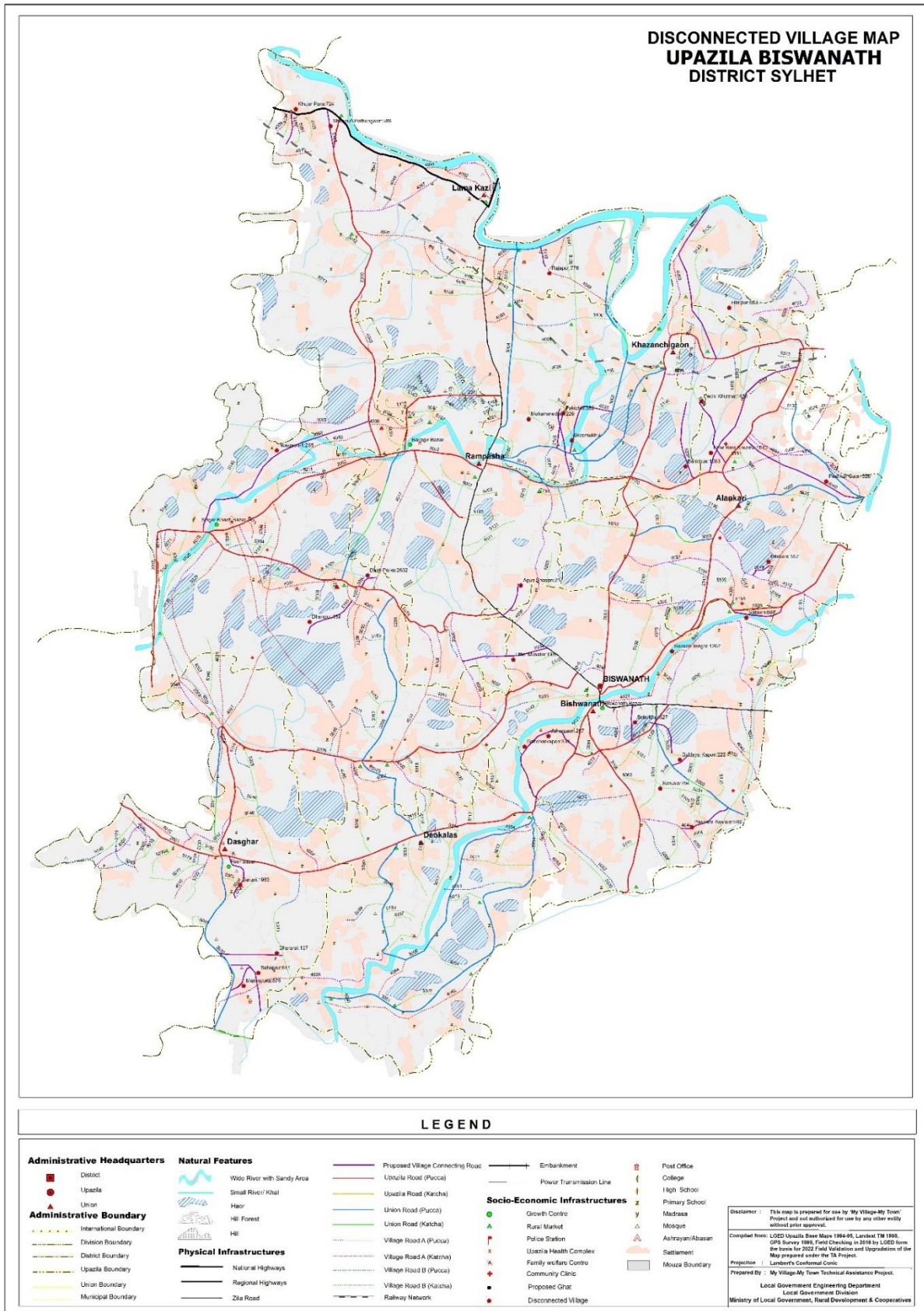


Figure 6: Upazila Map

## 6 DATA COLLECTION & ANALYSIS

The consultant team collected data from the field on Hard-to-Reach Villages. Data were collected from those villages including population, road alignment information (*type, length, condition*), travel time, a structure required on the alignment, potential Riverine routes that can be used for a multi-modal transport system etc. The data were then analyzed, categorized, and finally used to obtain a priority list along with a map (*Figure:5*) showing prioritized roads and Hard-to-Reach Villages. The proposed Riverine & road connectivity by the UE office have been discussed in this section.

### 6.1 PROPOSED ROADWAY FOR HARD-TO-REACH VILLAGES:

At present, roads are the most dominant mode of transportation. Most of the structures were built on the rivers to make road communication effective.

*Table 3: Summary of the rural roads in the Upazila*

Total Road Length of the Upazila (KM)	Paved Length (KM)	Unpaved Length (KM)	Length of unpaved roads of Hard-to-Reach Villages (KM)
589.06	286.13	302.93	51.88

#### 6.1.1 PROPOSED ALL-WEATHER ROUTES:

There are 29 all-weather roads proposed to connect the HTRV within the Upazila. The road name, ID, road condition, and the length of the unpaved roads are as bellow;

*Table 4: Proposed all-weather roads in the Upazila*

Sl No	Road Name	Road ID	Road Type by Surface Condition	Unpaved length (Km)
1	Betsandi BC road - Pithakara road.	691205079	All Weather	1.01
2	Biddaya Kapon to Vugshail Road	No ID	All Weather	0.5
3	Biswanath Collage-Saruwala-south Biswanath girls high school road.	691204076	All Weather	0.93
4	Biswanath- Jogonnathpur Road Basia River Par Via Jahargaon Road.	No ID	All Weather	1.30
5	Bypass Surirkhal to Kharikona Durghapur Road	No ID	All Weather	0.95
6	Link road to Dashpaika-Anwarpur-Jagadishpur (near the house of Basiruddin)	691205093	All Weather	0.5
7	Dhararai Pacca Road to Khalapani Road	No ID	All Weather	1.25
8	East Tangra Alipara Pacca Road to Dharus Salam Mosque Road via Sithar Miha House.	691205195	All Weather	1.05



SI No	Road Name	Road ID	Road Type by Surface Condition	Unpaved length (Km)
9	Gobindopur to Gandharkapan Via Mirerchor-2 GPS	No ID	All Weather	0.825
10	Kamal bazer-Talibpur-Mirgow-Chotokhorma Road.	691204025	All Weather	1.26
11	Mandaruka GpS GazirMokam Road	No ID	All Weather	1.250
12	Mohammadpur Akhara-Pritigonj bazar via Joynagar Primary school road.	691205080	All Weather	2
13	Nawagow - Rajagonj bazar road.	691204032	All Weather	2.587
14	Norshingpur-Gorgaon-Agunshasan-Ashugonj Bazar Road	No ID	All Weather	2.7
15	Pirer bazar - Borni Govt. pry. School road.	691205066	All Weather	0.8
16	Prithigonj Bazar to Pakhijiri Jama Mosque Road	691205186	All Weather	1.6
17	Purbo Bondhua Primary School-Roghupur Road via Islampur.	691205039	All Weather	1.78
18	Rampur (Bazar Mosque)-Borokhurma road via Chotokhurma.	691205036	All Weather	1.05
19	Rampur-Muktir Bazar Via Saifagonj Road.	691204019	All Weather	2.4
20	RHD Lamakazi - Uttor Biswanath High School Road to Akilpur LGED Road Via Rajapur South Jama Mosque.	691205183	All Weather	1.05
21	RHD Rampasa-Biswanathergow Road.	691205034	All Weather	2
22	RHD Sunamgonj Road Near Kazi Bari - Patanar Goua.	691205122	All Weather	2
23	Roth Bari Bazar Mondir to Baghmara Road.	No ID	All Weather	0.913
24	Sabajpur Pucca Road to Binnakhandi Via Eidgha	No ID	All Weather	2.00
25	Shasrum School - Nazir bazar road.	691204044	All Weather	0.69
26	Shinger kach bazar - shingraoli- purbapara-Bangla bazar road.	691204050	All Weather	2.95
27	South Doshpaika -Pathania khal-Chaldhoni hawor road.	691205110	All Weather	1.5
28	Sylhet Kamal bazar - Ponauilh bazar-Biswanath Road to Peshkarergow road.	691204040	All Weather	0.75
29	Sylhet Sunamgonj RHD to Dattapur Khujarpara - Madubpur school road.	691205139	All Weather	1.03

### 6.1.2 PROPOSED ROADS FOR HARD-TO-REACH VILLAGES HAVING NO ID:

There are 29 roads proposed to connect the HTRV within the Upazila that have no ID yet. The road name, ID, and the length of the unpaved part are as bellow;

*Table 5: Proposed roads for Hard-to-Reach Villages having No ID*

Sl. No	Road Name	Road ID	Unpaved length (Km)
1	Biddaya Kapon to Vugshail Road	No ID	All Weather
2	Biswanath- Jogonnathpur Road Basia River Par Via Jahargaon Road.	No ID	All Weather
3	Bypass Surirkhal to Kharikona Durghapur Road	No ID	All Weather
4	Dhararai Pacca Road to Khalapani Road	No ID	All Weather
5	Gobindopur to Gandharkapan Via Mirerchor-2 GPS	No ID	All Weather
6	Mandaruka GpS GazirMokam Road	No ID	All Weather
7	Norshingpur-Gorgaon-Agunshasan-Ashugonj Bazar Road	No ID	All Weather
8	Roth Bari Bazar Mondir to Baghmara Road.	No ID	All Weather
9	Sabajpur Pucca Road to Binnakhandi Via Eidgah	No ID	All Weather

### 6.1.3 PRIORITY FOR ROAD DEVELOPMENT

Considering resources constraint, benefited a group of people, the time required to travel & road hierarchy, a priority list has been developed (Annexure- 2) for the HTRV (Hard to Reach Villages). The priority score has been determined according to following

*Table 6: Considered weightage values for the prioritization*

Criteria	Weightage
Population	30
Travel Time	20
Cost per 1000 Population	25
Road Type	25
<b>Total=</b>	<b>100</b>

It has been observed that there are a number of roads that bear the same score. In these cases, the minimum budget required for providing connectivity to thousands of people- will get more priority compared to more budget-required roads. The roads bearing ID will have higher priority than the roads without ID.

## 7 CONCLUSION & RECOMMENDATIONS

---

- Bishwanath Upazila is located within the *Flashflood zone*. Bishwanath is partly covered by 3 major haors/ wetlands and there exist 3(three) rivers flowing over the Upazila that dominate the ecosystem, and transport system of the Upazila. During monsoons, these Rivers carry a huge volume of flood water.
- As the Upazila is heavily flooded during monsoon, rural roads and structures are highly vulnerable in this Upazila.
- The Upazila has a total number of 29 Hard-to-Reach Villages. To develop rural connectivity, there are proposals for both all-weather and submersible roads. This report contains a list of roads with their priority. The priority has been determined based on Population, Travel Time, Cost per KM/1000 people & Road Hierarchy.
- This Upazila is highly vulnerable to disasters. Due to climate change, vulnerability is getting intense. The year 2022 has shown catastrophic flood that was not seen over the last 18 years (*last in 2004 similar to 1998 & 1988*). Therefore, it is highly recommended to study the road alignments before going for investment.
- Case-by-case design of roads in this Upazila considering different aspects such as exposure to floods, erosion etc. is highly recommended. A special study regarding the road and structure design of the Bishwanath Upazila in Sylhet district is highly recommended.

# ANNEXURE - 1

## DETAILS OF GROWTH CENTER & HATBAZAR

Sl. No.	Union	Market Name	Market Category (GC=Growth Center, HB=Hat Bazar)	Market Listed? (Yes/ No)	Market Category (General/Special/Collection center)	Market Category (Wholesale/Retail/both)	Hat Day	Chandina a Viti (Number)	Chandina Viti (Land)	Chandina Viti (Shop)	Land Area (Acre)			Lease/ Khas Collection BDT (2020)	Lease/ Khas Collection BDT (2019)
											Toha	Khas	Private		
1	Alankari	Rampur masjid bazar	HB	Yes	General Market	Wholesale	2	0	0.00	0	0.05	0.00	0.05	5001	0
2	Alankari	Phonauallah bazar	HB	Yes	General Market	Both	2	35	0.15	22	0.07	0.46	0.00	400	300
3	Alankari	Munsir bazar	HB	Yes	General Market	Both	2	0	0.00	0	0.00	0.03	0.37	0	0
4	Alankari	Ramdhana bazar	HB	Yes	General Market	Wholesale	1	0	0.00	0	0.00	0.33	0.00	0	0
5	Alankari	Rothbari bazar	HB	Yes	General Market	Wholesale	1	0	0.00	0	0.00	0.70	0.00	0	0
6	Alankari	Tengra bazar	HB	Yes	General Market	Wholesale	1	0	0.00	0	0.00	0.17	0.00	0	0
7	Bishwanath	Biswanath bazar	GC	No	General Market	Both	2	0	0.00	0	0.00	0.84	0.27	1681028	727295
8	Bishwanath	Biswanth nuton bazar	HB	No	General Market	Both	2	136	1.10	136	0.15	0.00	2.21	1681028	727295
9	Bishwanath	Khaya khair bazar	HB	Yes	General Market	Both	2	90	0.47	90	0.17	0.60	0.37	18000	16800
10	Dasghar	Pirer bazar	GC	Yes	General Market	Both	2	0	0.00	0	0.00	1.18	0.00	350000	205000
11	Dasghar	Miar bazar	HB	Yes	General Market	Both	2	41	0.21	12	0.07	0.34	0.00	26000	15000
12	Dasghar	Mashu khali bazar	HB	Yes	General Market	Wholesale	2	44	0.21	30	0.09	0.11	0.34	1550	1753
13	Daulatpur	Puran habra bazar	HB	No	General Market	Both	2	110	0.55	110	0.15	1.47	1.59	91220	85000
14	Daulatpur	Shinger kach bazar	GC	Yes	General Market	Both	2	133	0.51	82	0.05	0.43	0.00	37100	32100
15	Daulatpur	Dosh paika bazar	HB	Yes	General Market	Wholesale	2	10	0.05	10	0.04	0.16	0.08	1100	600
16	Daulatpur	Chanpur bazar	HB	Yes	General Market	Wholesale	1	0	0.00	0	0.00	0.00	0.00	0	0

Sl. No.	Union	Market Name	Market Category (GC=Growth Center, HB=Hat Bazar)	Market Listed? (Yes/ No)	Market Category (General/Special/ Collection center)	Market Category (Wholesale/ Retail/both )	Hat Day	Chandina Viti (Number)	Chandina Viti (Land)	Chandina Viti (Shop)	Land Area (Acre)			Lease/ Khas Collection BDT (2020)	Lease/ Khas Collection BDT (2019)
											Toha	Khas	Private		
17	Daulatpur	Nuton habra bazar	HB	No	General Market	Wholesale	1	0	0.00	0	0.00	0.81	0.00	0	0
18	Daulatpur	Tuker bazar	HB	No	0	0	0	0	0.00	0	0.00	0.00	0.00	0	0
19	Deokalas	Bagicha bazar	HB	Yes	General Market	Wholesale	2	52	0.26	30	0.23	0.75	0.12	1550	2900
20	Deokalas	Kahirghat bazar	HB	Yes	General Market	Wholesale	2	23	0.18	20	0.05	0.29	0.00	2450	3000
21	Deokalas	Kaligonj bazar	HB	No	General Market	Wholesale	2	16	0.08	9	0.07	0.21	0.00	900	900
22	Deokalas	Ahmedgonj bazar	HB	Yes	General Market	Wholesale	1	0	0.00	0	0.00	0.00	0.00	0	0
23	Deokalas	Konari bazar	HB	Yes	General Market	Wholesale	1	0	0.00	0	0.00	0.61	0.00	0	0
24	Deokalas	Rajar bazar	HB	Yes	General Market	Wholesale	1	0	0.00	0	0.00	0.00	0.30	0	0
25	Khazanchi	Rajagonj bazar	HB	Yes	General Market	Wholesale	2	34	0.17	34	0.05	0.09	0.00	12830	23000
26	Khazanchi	Muktir bazar	HB	Yes	General Market	Wholesale	2	30	0.20	25	0.10	0.53	0.00	18000	17000
27	Khazanchi	Romonganj bazar	HB	Yes	General Market	Wholesale	2	0	0.00	0	0.02	0.02	0.05	480	800
28	Khazanchi	Kajanchi mosjid bazar	HB	Yes	General Market	Wholesale	2	0	0.00	0	0.15	0.00	0.15	600	0
29	Khazanchi	Atgram bazar	HB	Yes	General Market	Wholesale	2	44	0.22	44	0.08	0.00	0.30	530	0
30	Khazanchi	Naya bandor bazar	HB	Yes	General Market	Wholesale	1	0	0.00	0	0.00	0.00	0.42	0	0
31	Khazanchi	Saifa gonj bazar	HB	Yes	General Market	Wholesale	1	0	0.00	0	0.00	0.06	0.00	0	0
32	Lama Kazi	Lama kazi bazar	HB	Yes	General Market	Both	2	86	0.37	49	0.09	0.78	0.00	301000	105600
33	Lama Kazi	Burki bazar	HB	Yes	General Market	Wholesale	3	18	0.09	19	0.01	0.22	0.00	2300	2200
34	Lama Kazi	Gulchand bazar	HB	Yes	General Market	Both	2	50	0.30	27	0.35	0.89	0.00	550	500
35	Lama Kazi	Porgona bazar	HB	Yes	General Market	Wholesale	1	0	0.00	10	0.00	0.39	0.00	0	200

Sl. No.	Union	Market Name	Market Category (GC=Growth Center, HB=Hat Bazar)	Market Listed? (Yes/ No)	Market Category (General/Special/Collection center)	Market Category (Wholesale/Retail/both)	Hat Day	Chandina Viti (Number)	Chandina Viti (Land)	Chandina Viti (Shop)	Land Area (Acre)			Lease/ Khas Collection BDT (2020)	Lease/ Khas Collection BDT (2019)
											Toha	Khas	Private		
36	Rampasha	Bairagir bazar	GC	Yes	General Market	Both	2	107	1.05	66	0.50	2.35	0.00	283333	280000
37	Rampasha	Rampasha naya bazar	HB	Yes	General Market	Both	2	0	0.00	0	0.00	0.24	0.17	16750	7200
38	Rampasha	Amtail bazar	HB	Yes	General Market	Both	2	80	0.58	67	0.16	1.22	0.00	67500	1500
39	Rampasha	Charar bazar	HB	Yes	General Market	Wholesale	2	0	0.00	0	0.00	0.32	0.00	1600	1500
40	Rampasha	Paler chak bazar	HB	Yes	General Market	Wholesale	2	0	0.00	0	0.05	0.08	0.00	200	200

## ANNEXURE - 2

### PRIORITY LIST FOR ROAD DEVELOPMENT

SL No	Upazila	Connecting Union	Connecting Village	Village Population BBS 2011	Population 2021 (Based on BBS 2011)	Road Name	Road ID	Road Type	Road Type by Surface Condition	Total Road Length	Paved length (Km)	HBB Length (km)	Unpaved length (Km)	Total Road Length to be Developed	HBB + Unpaved in (km)	Approx. Cost of Road (Lac)	Structure/ Gap (Meter)	Cost of Structure (in Lac)	Total Cost (in lac) (Roads + Structures)	Population /KM (10÷17)	Tentative Budget/1000 Population (in lac)	Travel Time (in min)	Weightage for Population	Weightage for Travel Time	Weightage for Cost per 1000 Pop	Weightage for Road Type	Total Weightage	Priority	
1	Bishwanath	Dasghar	Baruni	1963	2249	Pirer bazar - Borni Govt. pry. School road	691205066	VRB	All Weather	0.90	0.10		0.80	0.90	0.80	96.00	0.00	0.00	96.00	2811	42.68	12.00	20	10	25	12	67	1	
2	Bishwanath	Daulatpur	Dash Paika	2632	3016	Link road to Dashpaika-Anwarpur-Jagadishpur(near the house of Basiruddin)	691205093	VRB	All Weather	0.50			0.50	0.50	0.50	60.00	20.00	180.00	240.00	6031	79.58	7.50	20	10	25	12	67	2	
3	Bishwanath	Bishwanath	Uttar Musalia	1935	2217	RHD Rampasa-Biswanathergow Road	691205034	VRB	All Weather	2.50	0.50		2.00	2.50	2.00	240.00	0.00	0.00	240.00	1109	108.25	30.00	20	10	25	12	67	3	
4	3	Bishwanath	Alankari	Sabsen Tengra	1262	1446	East Tangra Alipara Pacca Road to Dharus Salam Mosque Road via Sithar Miha House	691205195	VRB	All Weather	1.05			1.05	1.05	1.05	126.00	0.00	0.00	126.00	1377	87.14	15.75	18	10	25	12	65	4
5	Bishwanath	Alankari	Pechi Khurma	1486	1703	Rampur (Bazar Mosque)-Borokhurma road via Chotokhurma	691205036	VRB	All Weather	1.05			1.05	1.05	1.05	126.00	6.60	59.40	185.40	1622	108.89	15.75	18	10	25	12	65	5	
6	Bishwanath	Dasghar	Mandaruka	876	1004	Mandaruka GpS GazirMokam Road	No ID	VRB	All Weather	1.25			1.25	1.25	1.25	150.00	0.00	0.00	150.00	803	149.45	18.75	18	10	25	12	65	6	
7	Bishwanath	Khazanchigaon	Bandhua	1063	1218	Purbo Bondhua Primary School-Roghupur Road via Islampur	691205039	VRB	All Weather	2.28	0.50		1.78	2.28	1.78	213.60	0.00	0.00	213.60	684	175.38	26.70	18	10	25	12	65	7	
8	Bishwanath	Khazanchigaon	Chifagonj	1011	1158	Rampur-Muktir Bazar Via Saifagonj Road	691204019	VRA	All Weather	2.90	0.50		2.40	2.90	2.40	288.00	0.00	0.00	288.00	483	248.63	36.00	18	10	25	12	65	8	
9	Bishwanath	Alankari	Uttar Bara Khurma	1010	1157	Kamal bazer-Talibpur-Mirgow-Chotokhorma Road.	691204025	VRA	All Weather	3.71	1.00	1.45	1.26	3.71	2.71	325.20	1.29	11.61	336.81	427	291.05	40.65	18	10	25	12	65	9	
10	Bishwanath	Bishwanath	Saruwala	794	910	Biswanath Collage-Saruwala-south Biswanath girls high school road	691204076	VRA	All Weather	2.43	1.50		0.93	2.43	0.93	111.60	0.00	0.00	111.60	978	122.67	13.95	15	10	25	12	62	10	
11	Bishwanath	Bishwanath	Paschim Sasram	589	675	Shasrum School - Nazir bazar road.	691204044	VRA	All Weather	3.19	2.50		0.69	3.19	0.69	82.80	0.00	0.00	82.80	978	122.69	10.35	15	10	25	12	62	11	
12	Bishwanath	Alankari	Sabsen	668	765	Roth Bari Bazar Mondir to Baghmara Road	No ID	VRB	All Weather	0.91			0.91	0.91	0.91	109.56	0.00	0.00	109.56	838	143.15	13.70	15	10	25	12	62	12	
13	Bishwanath	Lama Kazi	Rajapur	776	889	RHD Lamakazi - Uttor Biswanath High School Road to Akilpur LGED Road Via Rajapur South Jama Mosque	691205183	VRB	All Weather	1.05			1.05	1.05	1.05	126.00	1.00	9.00	135.00	847	151.84	15.75	15	10	25	12	62	13	
14	Bishwanath	Lama Kazi	Khuja Para	724	830	Sylhet Sunamgonj RHD to Dattapur Khuja Para - Madubpur school road	691205139	VRB	All Weather	1.03			1.03	1.03	1.03	123.60	2.00	18.00	141.60	805	170.70	15.45	15	10	25	12	62	14	

\*\*\* Cost for Roads & Structures; (All Weather Rd= 120 lac/km, Submersible= 180 lac/km, Structure= 9 lac/m)  
 \*\*\* Weightage Values; (Population = 30, Travel Time= 20, Cost per KM/1000 people= 25, Road Hierarchy= 25)

SL No	Upazila	Connecting Union	Connecting Village	Village Population BBS 2011	Population 2021 (Based on BBS 2011)	Road Name	Road ID	Road Type	Road Type by Surface Condition	Total Road Length	Paved length (Km)	HBB Length (km)	Unpaved length (Km)	Total Road Length to be Developed	HBB + Unpaved in (km)	Approx. Cost of Road (Lac)	Structure/ Gap (Meter)	Cost of Structure (in Lac)	Total Cost (in lac) (Roads + Structures)	Population /KM (10 <sup>-17</sup> )	Tentative Budget/1000 Population (in lac)	Travel Time (in min)	Weightage for Population	Weightage for Travel Time	Weightage for Cost per 1000 Pop	Weightage for Road Type	Total Weightage	Priority
15	Bishwanath	Bishwanath	Subirkhal	527	604	Bypass Surirkhal to Kharikona Durghapur Road	No ID	VRB	All Weather	0.95			0.95	0.95	0.95	114.00	0.00	0.00	114.00	636	188.80	14.25	15	10	25	12	62	15
16	Bishwanath	Alankari	Pitakara	557	638	Betsandi BC road - Pithakara road	691205079	VRB	All Weather	1.50	0.49		1.01	1.50	1.01	121.20	0.00	0.00	121.20	632	189.91	15.15	15	10	25	12	62	16
17	Bishwanath	Bishwanath	Biddaya Kapon	222	254	Biddaya Kapon to Vugshail Road	No ID	VRB	All Weather	0.50			0.50	0.50	0.50	60.00	0.00	0.00	60.00	509	235.89	7.50	15	10	25	12	62	17
18	Bishwanath	Alankari	Peshkar Gaon	326	374	Sylhet Kamal bazar - Ponaulh bazar- Biswanath Road to Peshkarergow road.	691204040	VRA	All Weather	1.25	0.50		0.75	1.25	0.75	90.00	0.00	0.00	90.00	498	240.95	11.25	15	10	25	12	62	18
19	Bishwanath	Bishwanath	Gandharkapan	334	383	Gobindopur to Gandharkapan Via Mirerchor-2 GPS	No ID	VRB	All Weather	0.83			0.83	0.83	0.83	99.00	0.00	0.00	99.00	464	258.70	12.38	15	10	25	12	62	19
20	Bishwanath	Dasghar	Sabajpur	641	734	Sabajpur Pacca Road to Binnakhandi Via Eidgha	No ID	VRB	All Weather	2.00			2.00	2.00	2.00	240.00	0.00	0.00	240.00	367	326.78	30.00	15	10	25	12	62	20
21	Bishwanath	Lama Kazi	Shahpur/ Pathangaon	588	674	RHD Sunamgonj Road Near Kazi Bari - Patanar Goua.	691205122	VRB	All Weather	2.00			2.00	2.00	2.00	240.00	0.00	0.00	240.00	337	356.24	30.00	15	10	25	12	62	21
22	Bishwanath	Bishwanath	Jahargaon	287	329	Biswanath- Jognathpur Road Basia River Par Via Jahargaon Road	No ID	VRB	All Weather	1.30			1.30	1.30	1.30	156.00	2.50	22.50	178.50	253	542.83	19.50	15	10	20	12	57	22
23	Bishwanath	Khazanchigaon	Pakichiri	382	438	Prithigonj Bazar to Pakhijiri Jama Mosque Road	691205186	VRB	All Weather	1.60			1.60	1.60	1.60	192.00	30.00	270.00	462.00	274	1055.56	24.00	15	10	15	12	52	23
24	Bishwanath	Daulatpur	Dhanpur	139	159	South Doshpaika - Pathania khal- Chaldhoni hawor road	691205110	VRB	All Weather	1.50			1.50	1.50	1.50	180.00	0.00	0.00	180.00	106	1130.22	22.50	15	10	15	12	52	24
25	Bishwanath	Dasghar	Dhararai	107	123	Dhararai Pacca Road to Khalapani Road	No ID	VRB	All Weather	1.25			1.25	1.25	1.25	150.00	0.00	0.00	150.00	98	1223.53	18.75	15	10	15	12	52	25
26	Bishwanath	Khazanchigaon	Mohammedpur	229	262	Mohammadpur Akhara-Pritigonj bazar via Joynagar Primary school road	691205080	VRB	All Weather	2.50	0.50		2.00	2.50	2.00	240.00	10.00	90.00	330.00	131	1257.72	30.00	15	10	15	12	52	26
27	Bishwanath	Daulatpur	Noagaon-1	255	292	Shinger kach bazar - shingraoli-purbapara- Bangla bazar road	691204050	VRA	All Weather	3.75		0.80	2.95	3.75	3.75	450.00	2.00	18.00	468.00	78	1601.81	56.25	15	10	12	12	49	27
28	Bishwanath	Rampasha	Agun Shasan	217	249	Norshingpur- Gorgaon- Agunshasan- Ashugonj Bazar Road	No ID	VRB	All Weather	3.20		0.50	2.70	3.20	3.20	384.00	16.00	144.00	528.00	78	2123.63	48.00	15	10	10	12	47	28
29	Bishwanath	Khazanchigaon	Sreemukh	4	5	Nawagow - Rajagonj bazar road	691204032	VRA	All Weather	3.00	0.41		2.59	3.00	2.59	310.44	0.00	0.00	310.44	2	67736.57	38.81	15	10	10	12	47	29

\*\*\* Cost for Roads & Structures; (All Weather Rd= 120 lac/km, Submersible= 180 lac/km, Structure= 9 lac/m)  
\*\*\* Weightage Values; (Population = 30, Travel Time= 20, Cost per KM/1000 people= 25, Road Hierarchy= 25)