



GOVERNMENT OF THE PEOPLE'S REPUBLIC OF BANGLADESH
MINISTRY OF LOCAL GOVERNMENT, RURAL DEVELOPMENT AND CO-OPERATIVES
Local Government Engineering Department (LGED)
Agargaon, Sher-E-Bangla Nagar, Dhaka-1207

Final Report on Study-03
'My Village -My Town' -Technical Assistance Project
“Feasibility Study for Rural Connectivity including Multi-Modal Transport
System in Char and Haor Areas”

Balaganj & Osmaninagar, Sylhet



July, 2022

CONTENTS

GLOSSARY	i
ABBREVIATIONS	ii
Background	iii
1 Description of the Upazila	2
1.1 Geography and Demography	2
1.2 Education Features.....	2
1.3 Rural Road Communications.....	2
1.4 Agriculture, Food Production, and Fisheries	2
1.5 Growth Centre and Hatbazar.....	3
2 Location of the Upazila	4
3 Approach & Methodology	6
3.1 Study Team Composition.....	6
3.2 Study Area.....	6
3.3 Database Review and Analysis	6
3.4 Prioritization Criteria of Sub-projects	7
3.5 Weightage Distribution for Prioritization.....	7
3.6 Mapping Hard-to-reach Villages & Population.....	8
3.7 Wrap Up Meeting.....	8
3.8 Validation Workshop.....	8
3.9 National Workshop.....	9
4 Description of Wetlands.....	10
4.1 Distribution of the Haors/ Wetlands.....	10
4.2 Haor/ Wetland Category.....	12
4.3 Bio-Ecological Characteristics.....	14
5 Rural Road Connectivity to the Villages	16
5.1 Summary of the Village Connectivity.....	16
5.2 Villages and their connectivity – Union level.....	16
5.3 Map of Hard-to-Reach Villages & Proposed Roads.....	27
6 Data Collection & Analysis	29
6.1 Proposed Roadway for Hard-to-Reach Villages:.....	29
6.1.1 Proposed All-Weather Routes:.....	29
6.1.2 Proposed Roads for Hard-to-Reach Villages Having No ID:	Error! Bookmark not defined.
6.1.3 Priority for Road Development	30
8 Conclusion & Recommendations	31
Annexure - 1.....	32
Annexure - 2.....	35

List of Figures

Figure 1: Balaganj Upazila Location Map	4
Figure 2: Prioritization indicators & their weightage values	8
Figure 3: Haor Distribution Map	11
Figure 4: Haor Category Map.	13
Figure 5: Bio Ecological Characteristics Map.....	15
Figure 6: Balaganj Upazila Map	27

List of Tables

Table 1: Total villages in the unions and their connectivity.....	16
Table 2: Union-wise connected & Hard-to-Reach Villages and their population.....	16
Table 3: Summary of the rural roads in Balaganj Upazila	29
Table 4: Proposed all-weather roads in Balaganuj Upazila	29
Table 5: Proposed roads for Hard-to-Reach Villages having No ID.....	30
Table 6: Considered weightage values for the prioritization.....	30

GLOSSARY

Hard-to-reach Villages mean in the Study those villages that are not connected by any paved road with the respective Upazila HQ and/or Union Parishad, and to the nearest economic activity hub and social service centres. The following explanations are important for the concept of hard-to-reach villages.

- In haor areas, Villages connected with submersible roads dry season and connected with Riverine/haor routes in the monsoon season have been considered accessible and excluded from hard-to-reach villages.
- Within Upazila, Villages that need a bridge to connect have not been considered hard-to-reach villages.
- In the case of island Upazilas, villages that are accessible with paved roads from Upazila HQ have been considered accessible and excluded from hard-to-reach villages.
- In the case of villages that are connected with HBB (Herring-Bone-Bond) or Brick flat soling routes have been considered hard-to-reach villages

Mauza Mauza is normally the geographical expression of a unit of landmass for revenue settlement and revenue collection, whereas, the village is a human settlement within a Mauza with a strong social bond. Within a Mauza there could be more than one village.

Union Bangladesh has 3-tiers local government systems: District, Upazila, and Union. Union is the lowest level of local government below Upazila Parishad

Upazila Sub-district; the third level of government administration below division and district.

Hat Synonym of Bazar or market

Walking Trail means in the Study the village pathway or access used for walking by commuters, in most cases does not have gazetted or established or commonly used alignment, and to the most, passable by bicycle or motorbike. These village trails are not passable by motorized jeeps or mini trucks or emergency service vehicles or not even any three-wheelers.

Unpaved Roads have no pavement or surface material. They are usually earthen roads.

Vulnerability is the human dimension of risk that is defined as conditions determined by physical, social, economic, environmental, political, cultural, and institutional factors or processes that increase the likelihood of an individual or a community to the impacts of shocks and hazards.

Climate-Resilience is expressed as the ability of a community to resist, absorb, adapt to and recover better from the impacts of disasters like floods and landslides in a sustainable way.

ABBREVIATIONS

ADB	– Asian Development Bank
BBS	– Bangladesh Bureau of Statistics
BC	– Bitumen Carpeting
DatEx	– Data Expert (Pvt.) Limited
DECL	– Delight Engineers and Construction Ltd.
DoE	– Department of Environment
DPHE	– Department of Public Health Engineering
DPP	– Development Project Proposal
FGD	– Focus Group Discussion
GIS	– Geographic Information System
GOB	– Government of Bangladesh
HBB	– Herring-Bone-Bond
HQ	– Headquarter
HTRV	– Hard-to-Reach Village
JV	– Joint Venture
KII	– Key Informant Interview
LGD	– Local Government Division
LGED	– Local Government Engineering Department
LGI	– Local Government Institute
MVMT	– My Village My Town
NGO	– Non-Government Organization
PD	– Project Director
PMO	– Project Management Office
RCC	– Reinforced Concrete
RHD	– Roads & Highways Department
SDGs	– Sustainable Development Goals
TA	– Technical Assistance Project
UE	– Upazila Engineer
UNDP	– United Nations Development Programme
UNO	– Upazila Nirbahi Officer
UNR	– Union Road
UP	– Union Parishad
UPZ	– Upazila Road
VRA	– Village Road A
VRB	– Village Road B

BACKGROUND

Context of the Project

The Government of Bangladesh made massive plans to ensure equitable development around the country. Under this development philosophy, the GoB requirements are to reduce the rural-urban divide to foster developmental benefits for all citizens. As part of this, the government declared an election manifesto on the eve of the national parliament election 2018 uniting the theme **Bangladesh on the March Towards Prosperity** aiming at transforming Bangladesh into a developed nation by 2041. Under this, villages have been considered the basic unit of prosperity for building a developed nation.

This firm commitment was declared following the light of the philosophy of the Father of the Nation Bangabandhu Sheikh Mujibur Rahman to build ‘Sonar Bangla’ (Golden Bangla) through inclusiveness, balanced, and development for all.

Following the philosophy of the Father of the Nation, the government declared its election manifesto 2018 titled ‘My Village-My Town’ - Extension of Modern Civic Amenities in Every village. The Local Government Division under the Ministry of Local Government, Rural Development and Cooperatives has prepared a comprehensive work plan to make this election commitment a reality. The Local Government Division with its two agencies, the Local Government Engineering Department (LGED) and Department of Public Health Engineering (DPHE) has undertaken a technical assistance project named ‘My Village-My Town’- Technical Assistance Project. Under this project, 36 studies and 30 guidelines are being developed on eight thematic components related to the mandate of the Local Government Division. The eight thematic components are Rural Communications, Growth Centre and Hat Bazar, Rural Water Supply and Sanitation, Rural Waste Management, Community Space and Recreation Facilities, Upazila Masterplan, Rural Housing and Capacity building of Upazila and Union Parishad. Besides this, a coordination framework is being developed among the other ministries involved in the implementation of the My Village-My Town election manifesto. It is notable to mention that a coordination committee has been formed comprising 21 ministries to implement the program in a coordinated way under the leadership of the Minister of Local Government, Rural Development, and Co-operatives.

Context of the Report

This report is a part of the study of the component ‘Rural Connectivity’. Rural connectivity is the basic of all amenities in the villages. Rural connectivity works as the conduit that can supply a number of bare necessities such as access to the market, health, education, employment etc. In general, Bangladesh has remarkable progress in rural connectivity. Instead of this, a number of regions of the country are geographically sensitive where rural connectivity is not easy and has a lot of challenges. These regions are -Haor, Beel, Hills, Chars, islands etc. The people residing in these regions have considerably low access to civic amenities compared to other villages of the country. Therefore, the study and plan development of improvement of rural connectivity is one of the important assignments of the technical assistance project. The project undertook an Upazila-based special study on the villages of these geographically sensitive regions that are mentioned before.

This report contains the rural connectivity status and priority plan of the **Balaganj and Osmaninagar** Upazila of **Sylhet** District.

1 DESCRIPTION OF THE UPAZILA

1.1 GEOGRAPHY AND DEMOGRAPHY

The geographical area of Balaganj Upazila is 375.75 square kilometers and has 14 unions, 239 mauzas, and 473 villages. The Upazila is 37km away from the district headquarters of Sylhet. Balaganj is partly covered by 13 major haors/ wetlands and there exist 3(three) rivers flowing over the Upazila. The total population of Upazila is 320227 of which 157975 are male and 162252 females, the total number of households are 54246 and the average household size is 5.9 with a population density of 852 (as per population census 2011)¹.

1.2 EDUCATION FEATURES

According to the information of the relevant local government offices, there are 143 government & 33 non-government primary schools in the Upazila. On the other hand, Balaganj has 31 non-government with no government high schools, 1 school & College, 4 private colleges, and 16 madrasahs. The literacy rate for the Upazila is 50.2% as per BBS 2011.

1.3 RURAL ROAD COMMUNICATIONS

Bangladesh scored in the rural accessibility index at around 87 percent among South Asian and some other African countries. Generally, the people of Bangladesh get all-weather within 2 kilometers adjacent to their living places. But the feature of rural road communications in Balaganj Upazila is contrasted. There are many villages, disconnected from the developed paved road network that brings huge suffering for the people of the villages. The total rural road network of Balaganj is 282.33 km and out of which, 95.19 km are paved and 187.15 km earthen.

1.4 AGRICULTURE, FOOD PRODUCTION, AND FISHERIES

Though the aggregate (coarse sand, stone chips & stone) business is the main source of income for the inhabitants, agriculture too has major importance for the economy of the people of Balaganj. There are 92852 acres of arable land in Upazila. In the fiscal year 2010-11, the Rice production was 5547, 32314 & 53900 metric tons for Aus, Aman & Boro seasons respectively. The Upazila also produced 144 metric tons of Potato in the same fiscal year 2010-11. A notable quantity of vegetables is also produced here in this Upazila.

According to the BBS (2011) data, Balaganj has 6423 Acre of haor, pond & dighee that produced 1263 metric tons of fish. There also exist 65 poultry & 15 dairy farms.

¹ Osmani Nagar thana was established with eight Union Parishads of Balaganj Upazila on 23 March 2001. On 2 June 2014, the thana was turned into an upazila. Due to the unavailability of the separate data of Osmani Nagar Upazila, we discussed the data of Balaganj and Osmani nagar Upazila jointly.

All the agricultural products are adequate to meet the demand of the Upazila and surpluses are sold outside of Balaganj.

1.5 GROWTH CENTRE AND HATBAZAR

Growth Centre and Rural Hatbazar are one of the main centers of the rural economy. Hatbazar is like the heart of the development of the rural economy. Rural Hatbazar plays a role in increasing production and creating employment impacting the supply chain of agriculture and non-agriculture products. There are 22 Hatbazar and 2 growth centers in Balaganj Upazila. On the other hand, there are 16 Hatbazar and 3 growth centers in Osmani Nagar Upazila. The structural development of Hatbazar and its growth is pivotal to boosting the rural economy. Details of the growth center & hatbazar of the Upazila have been attached in **Annexure-1**.

2 LOCATION OF THE UPAZILA

Balaganj Upazila of Sylhet district in the North-Eastern part of the country. The location has been shown on the map. The Upazila is situated at the south border of the district and causes flash floods during monsoon coming from uphill Meghalaya where is Cherrapunji, the wettest place on earth, resulting in waterlogging within the haor basin. Flash floods induce severe impacts on both the built and the natural environment. The effects of flash floods can be catastrophic and show extensive diversity, ranging from damages to buildings and infrastructure to impacts on vegetation, human lives, and livestock.

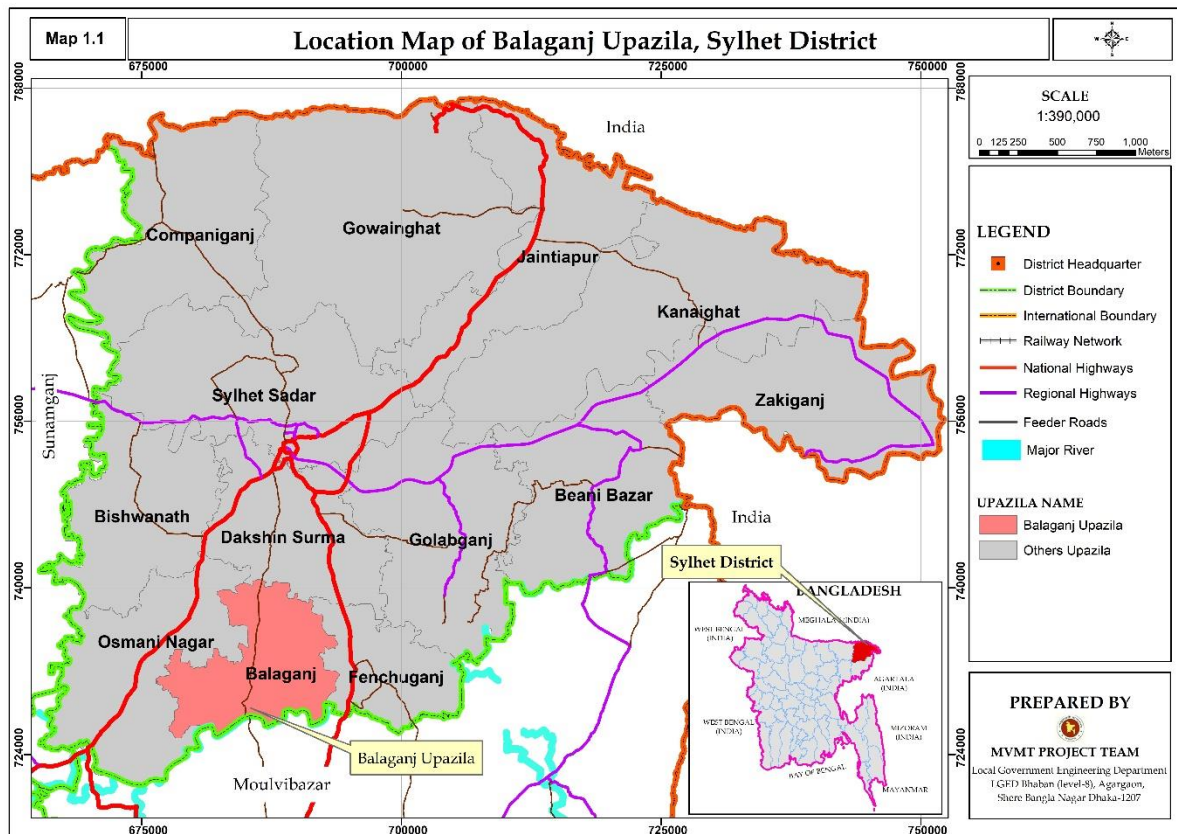


Figure 1: Balaganj Upazila Location Map

Location of Osmani Nagar Upazila:

Osmani Nagar Upazila of Sylhet district in the North-Eastern part of the country. The location has been shown on the below map. The Upazila is situated at the south-west corner of the district and causes flash floods like Balaganj Upazila.

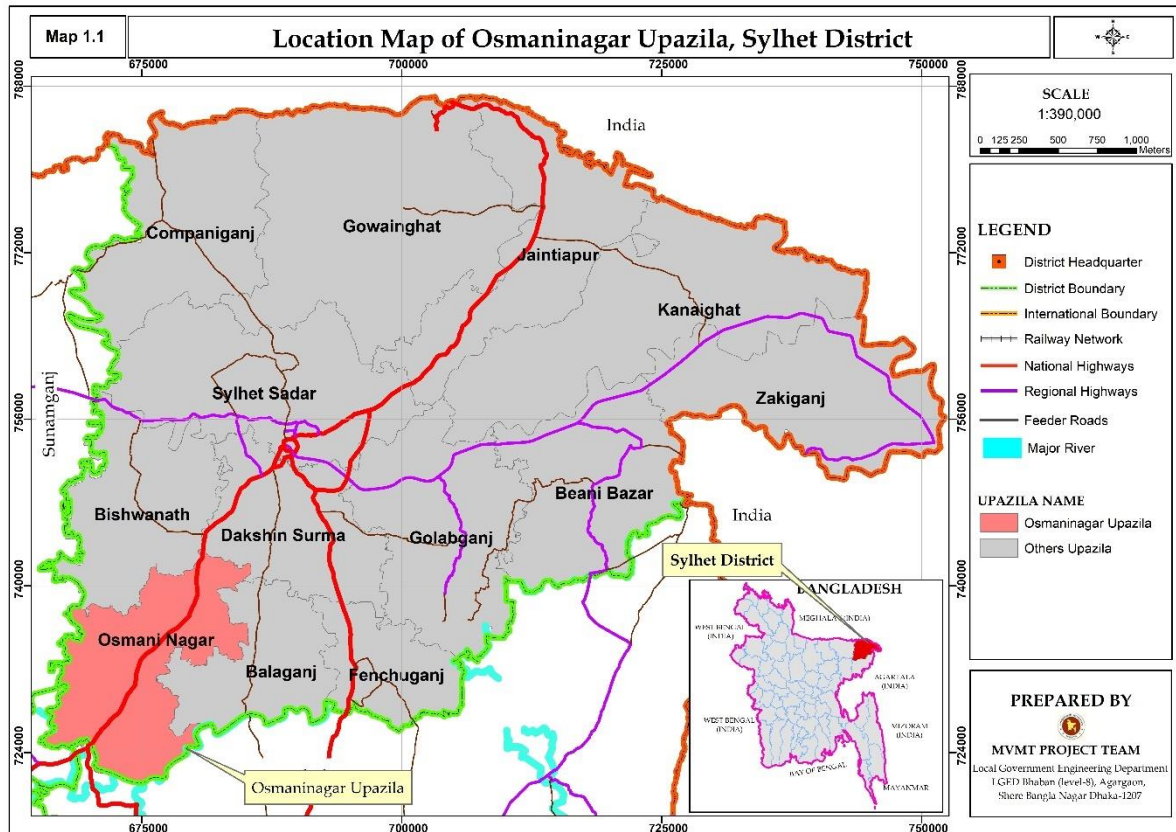


Figure 2: Osmani Nagar Upazila Location Map

3 APPROACH & METHODOLOGY

3.1 STUDY TEAM COMPOSITION

A team consisting of Senior Rural Road Infrastructure Specialist, Associate Rural Infrastructure Specialist, and Assistant Engineer engaged by the Project Management Office (PMO) conducted the study. On the other hand, A team consisting of Deputy Team Leader cum Rural Infrastructure Engineer, Junior GIS expert, and Junior Engineer engaged by consulting firm (datEx & DECL JV) conducted the study. A participatory approach to review the database and identify priority transport infrastructure needs (‘sub-projects’) was instrumental. At the stakeholder consultation meeting held in each district, the database was reviewed, and priority needs were identified and mapped working together with the LGI representatives and LGED technical team. LGED and LGI representatives surveyed each Upazila for the collection of detailed observations and validations of the proposed priority needs.

Stakeholder Consultation Meeting

- Hard-to-reach Village Database and database of sub-projects reviewed
- Prioritization of sub-projects for each Upazila with LGI and LGED representatives
- Hard-to-reach villages and priority sub-projects mapped in the LGED GIS Map

3.2 STUDY AREA

The study was conducted in 72 Upazilas of haor areas, 3 Upazilas of Beel areas, 8 Upazilas of Char areas, and 4 Upazilas of Island areas during the period from December 2021 to June 2022. Apart from this, the PMO team conducted the study in 50 Upazilas of Haor areas, and the rest of the Upazilas of Haor, Beel, Char, and Island areas are conducted by the consulting firm team. The Upazila technical staff of LGED supported in organizing stakeholder consultation meetings and in database review and mapping the Hard-to-reach villages and population during this study period. They also supported the field work and authentication check by visits to the sub-projects in their respective Upazila and looking at the feasibility of some proposed sub-projects from technical, social, and environmental perspectives.

3.3 DATABASE REVIEW AND ANALYSIS

The study applied both qualitative (e.g., focused group discussions and in-depth case study fieldwork) and quantitative (structured and semi-structured interviews) approaches and methods in reviewing and conducting fieldwork in all the haor areas to understand the need and impact of rural accessibility in remote village contexts. The most applied methods in the reviewing and conducting fieldwork were:

- Key Informants Interview (KII)
- Focus Group Discussion (FGD)
- Case Study for authentication check and individual sub-project feasibility study.

- ❖ Review the Hard-to-reach village database at the ‘Stakeholder consultation meeting’ participated by local government representatives such as the UP chairman and members, Upazila chairman, vice-chairman, and UNO.
- ❖ FGD and KII were conducted using a checklist. Composition in the FGD included local community people: male and female, teachers, local farmers, traders, and students depending on availability.
- ❖ KIIs of Union Chairman, Upazila chairman, UNO male and female, and teacher depending on availability.
- ❖ Authentication and feasibility check by visits to the sub-projects reviewed and listed for the 40 selected case study unions under the MVMT project.
- ❖ Survey with GPS machine and Google apps in collecting Hard-to-reach village locations, landmarks, chainage at gaps, village road at sections vulnerable to land erosion damage, narrow existing width or sharp slope location.

3.4 PRIORITIZATION CRITERIA OF SUB-PROJECTS

Prepare a priority list of sub-projects by Upazilas that includes gazette ID roads and non-gazette roads (No ID) with attributes like name and number of villages and population. The criteria used in the prioritization are described below.

- Population, travel time needed from the remotest villages to the Upazila HQ, road type, and cost per km per 1000 population are the indicators weighted giving a value in a formula.
- Priority is given to single connection with no alternative transport road and multi-modal transport route to connecting the villages with Upazila HQ and Union Parishad, growth centre and important markets and social service centres; villages with a higher population and travel time get higher weightage;
- Priority is given to roads, ghats, and collection points that will facilitate agricultural diversification, reduce transportation costs, ensure a fair price and create a farm and non-farm employment and income;
- Priority is given to roads development and inland waterways dredging that will enable year-round mobility of the general public and villagers, in particular, health workers, teachers and students, and tourists to facilitate tourism development, quality education, and better health service in the district and region;
- Special priority is given to sub-projects of roads, Riverine routes/inland waterways that will mainstream deprived communities living in the hard-to-reach villages;
- Identified sub-projects with more cost-effectiveness than others using per km per 1000 population cost for each sub-project;
- Every sub-project(s) is to be climate-resilient, sustainable, and cost-effective.

3.5 WEIGHTAGE DISTRIBUTION FOR PRIORITIZATION

The approaches and methodologies of the Study for reviewing database and prioritization are synthesized in the diagrams below, noting that the proposed sub-projects of roads in the databases are prioritized based on weightage calculated on the set criteria (as shown in the diagram). People’s demands and local needs are reflected in the prioritization which was

determined by the Study, working together with LGI representatives and LGED field-level technical staff at the stakeholder consultation meetings held in each Upazila.

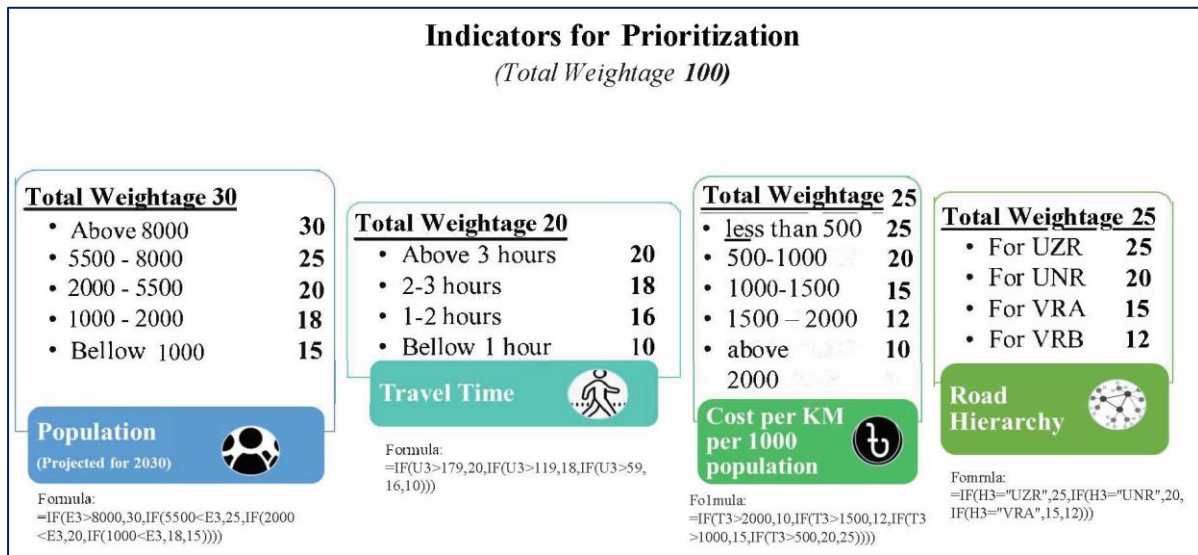


Figure 2: Prioritization indicators & their weightage values

3.6 MAPPING HARD-TO-REACH VILLAGES & POPULATION

- With the active support of LGED technical staff, first, draw every priority listed MVMT roads and Hard-to-reach villages on the LGED GIS map in presence of the union Chairman and members who know the sub-project and are the best. This was not in scale but approximation was reached by triangulation. Then digitized on screen using GIS, validate with Google map, and checked with data and information on important features and points collected using GPS during field visits.
- There were challenges in deciding on starting node and/or zero chainage of the non-gazette (No ID) road because not all non-gazette sub-projects were visited and surveyed by the Study team.

3.7 WRAP UP MEETING

Wrap up the fieldwork progress at each district holding a meeting chaired by the Executive Engineer, LGED, and participated by all Upazila engineers of the respective district. On completion of the fieldwork, this was conducted to share issues and updates to the district Executive Engineer for feedback and action, as necessary.

3.8 VALIDATION WORKSHOP

On completion of data analysis and drafting of the database and mapping, the Study outputs were shared with the respective districts and Upazilas for final review. The later validation workshop was held at the respective district on the Draft Report to share and validate the findings. This was participated by the LGED Division, District and Upazila officials, and technical staff.

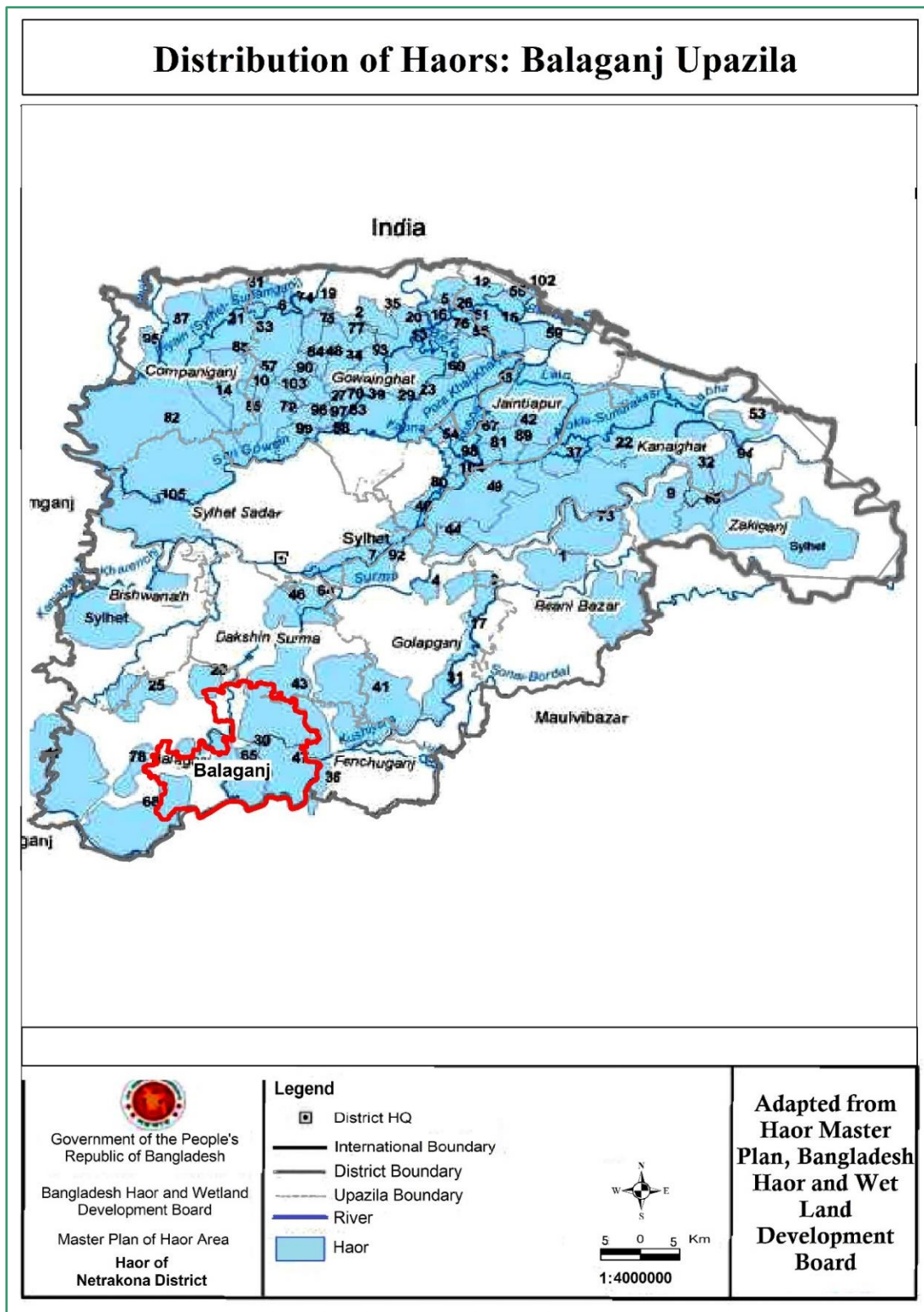
3.9 NATIONAL WORKSHOP

The Draft Report is finalized, incorporating comments received from the validation workshop, LGED head office staff, and the PMO office. A National Level workshop was held at LGED HQ for sharing and disseminating the results of the Study.

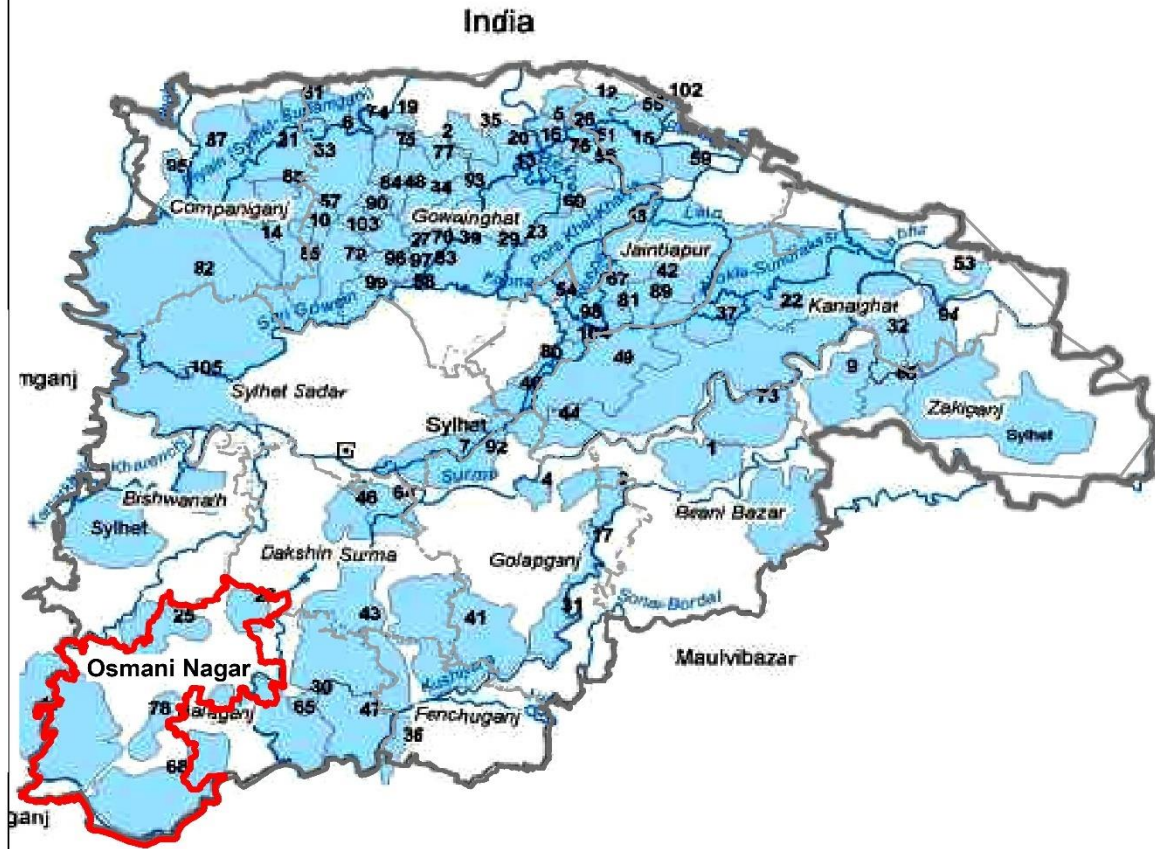
4 DESCRIPTION OF WETLANDS


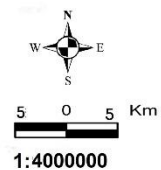
4.1 DISTRIBUTION OF THE HAORS/ WETLANDS

Balaganj Upazila has a large portion of flash flood zone that covers almost 80-90% of its land area and the flash flood zone of Osmani Nagar is 60-70%. The roads within the flood zone become inundated during monsoon, which requires attention to take relevant measures during road construction and maintenance.



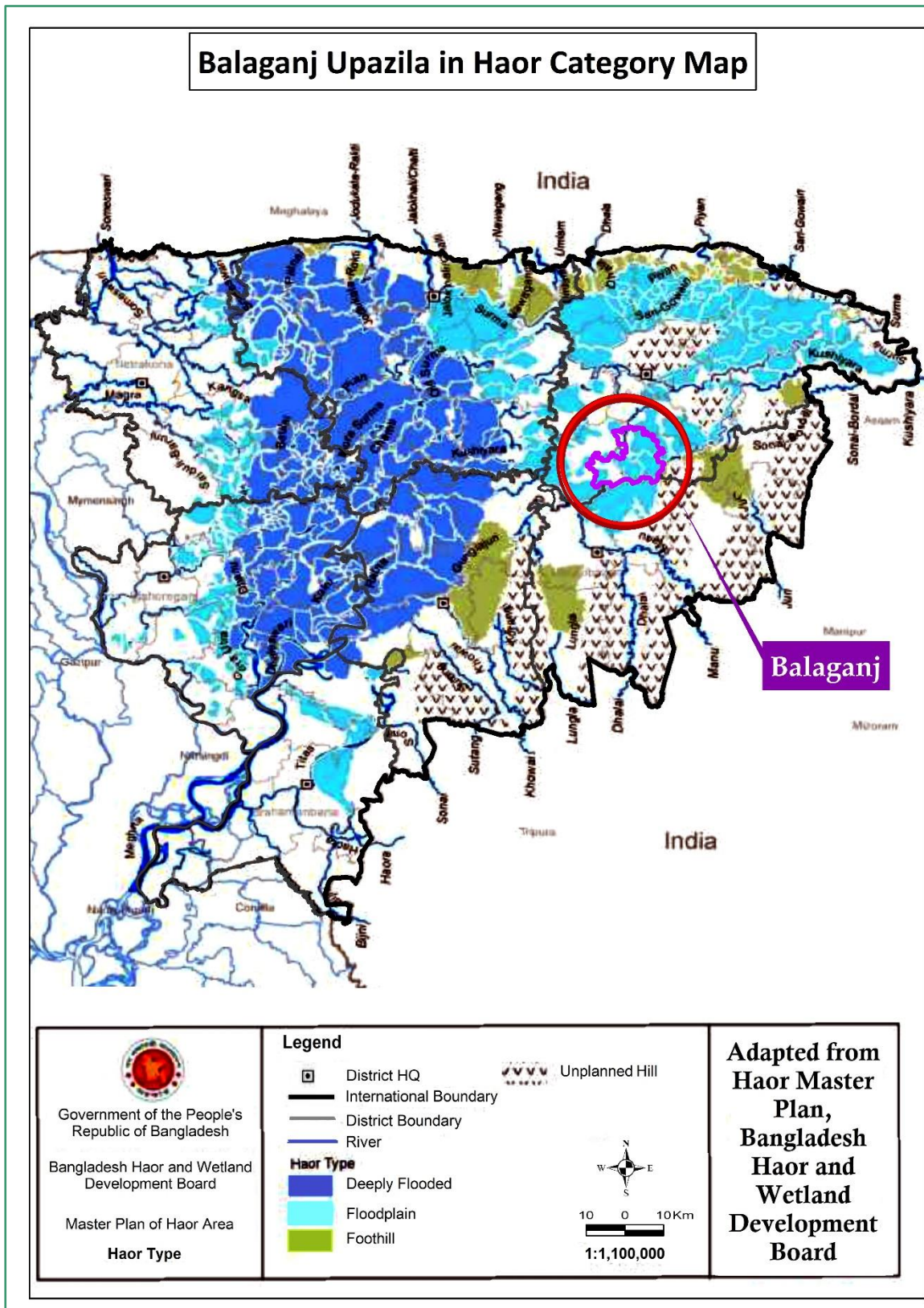
Distribution of Haors: Osmaninagar Upazila



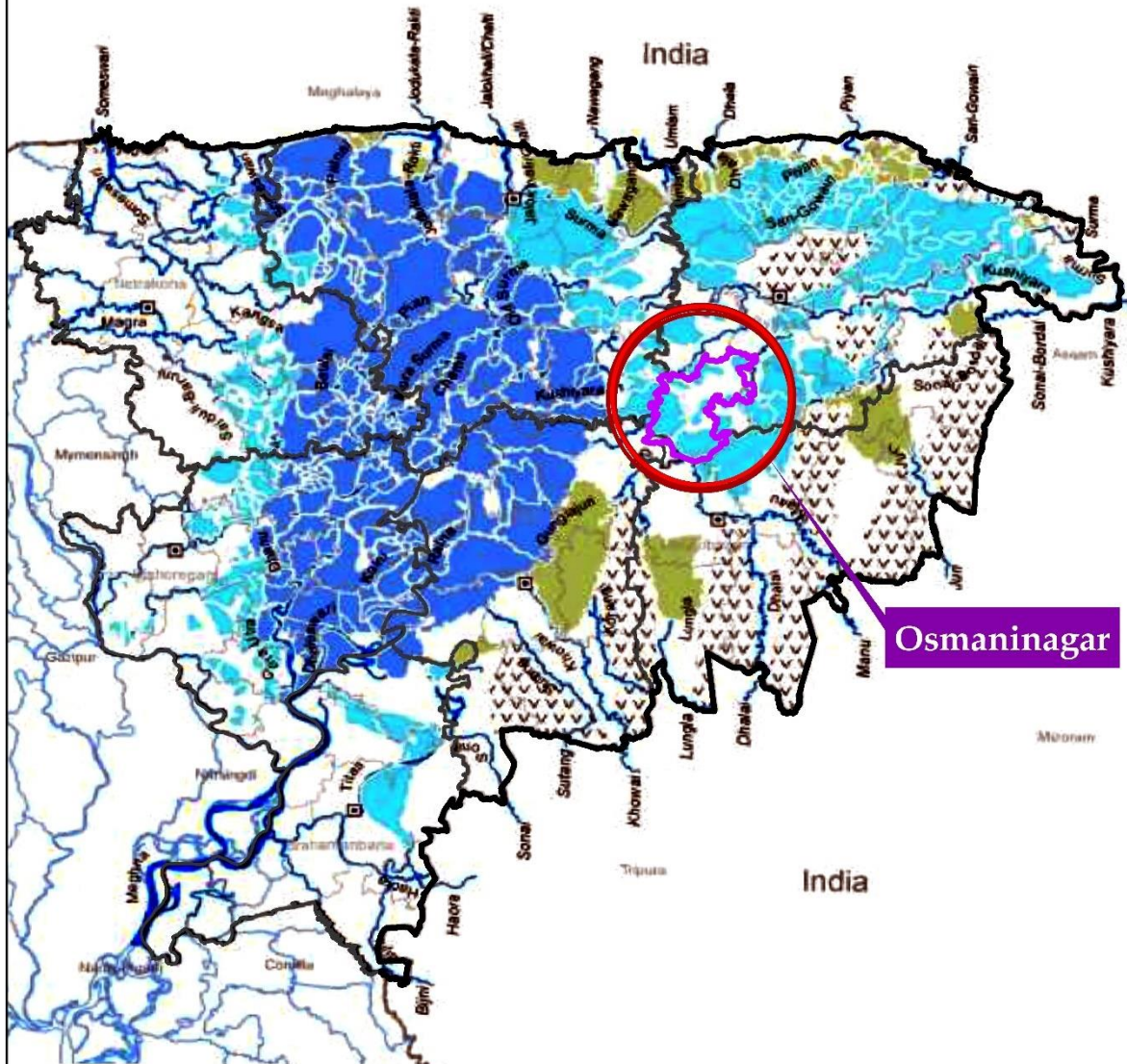
 <p>Government of the People's Republic of Bangladesh Bangladesh Haor and Wetland Development Board Master Plan of Haor Area Haor of Netrakona District</p>	<p>Legend</p> <ul style="list-style-type: none"> District HQ International Boundary District Boundary Upazila Boundary River Haor 	<p>Adapted from Haor Master Plan, Bangladesh Haor and Wetland Development Board</p>  <p>5 0 5 Km 1:4000000</p>
---	--	---

4.2 HAOR/ WETLAND CATEGORY












However, most of the two Upazila area is within floodplain range. Therefore, road or other infrastructure development in this Upazila does not have any major environmental consequences.



Osmaninagar Upazila in Haor Category Map

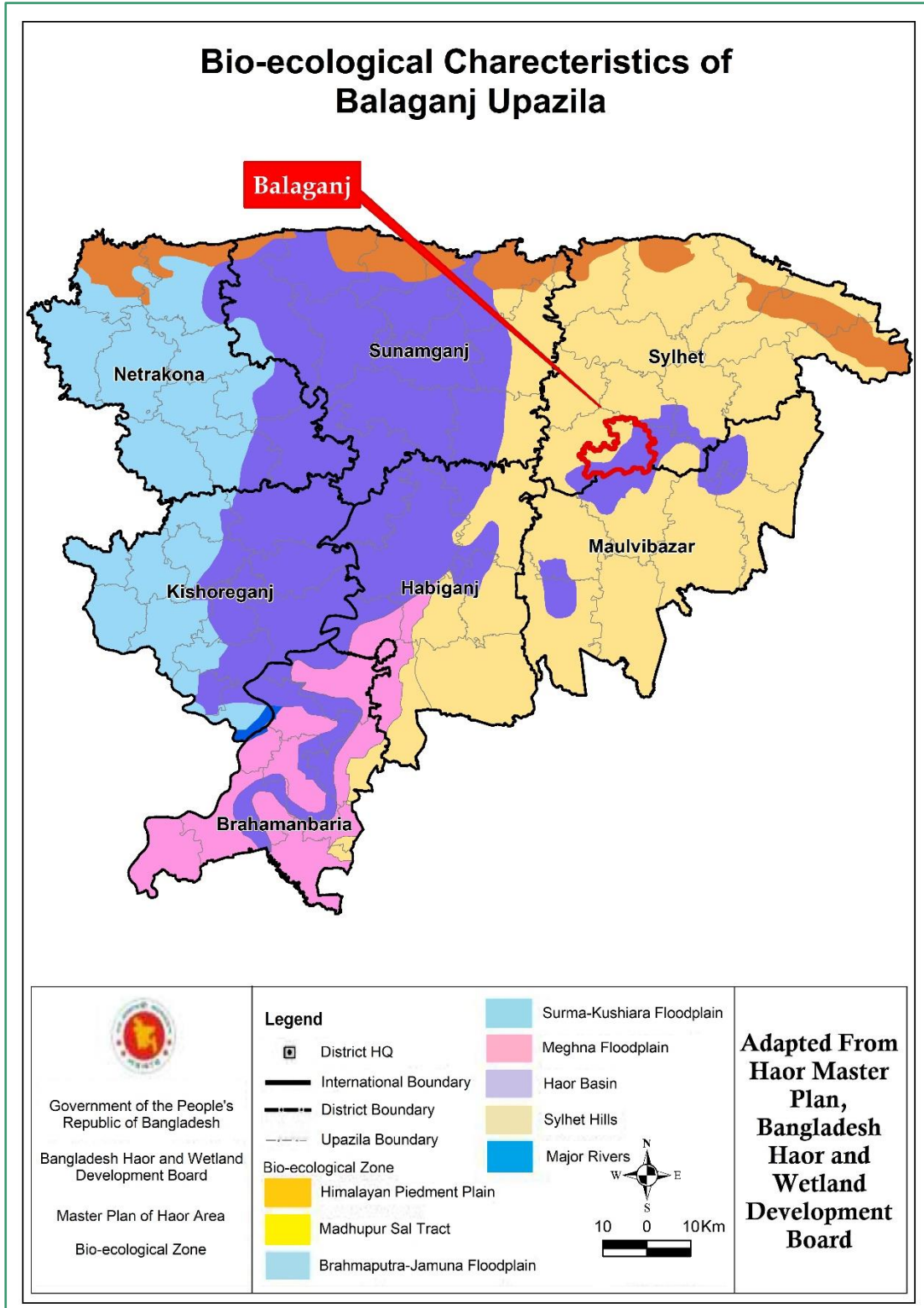


Osmaninagar

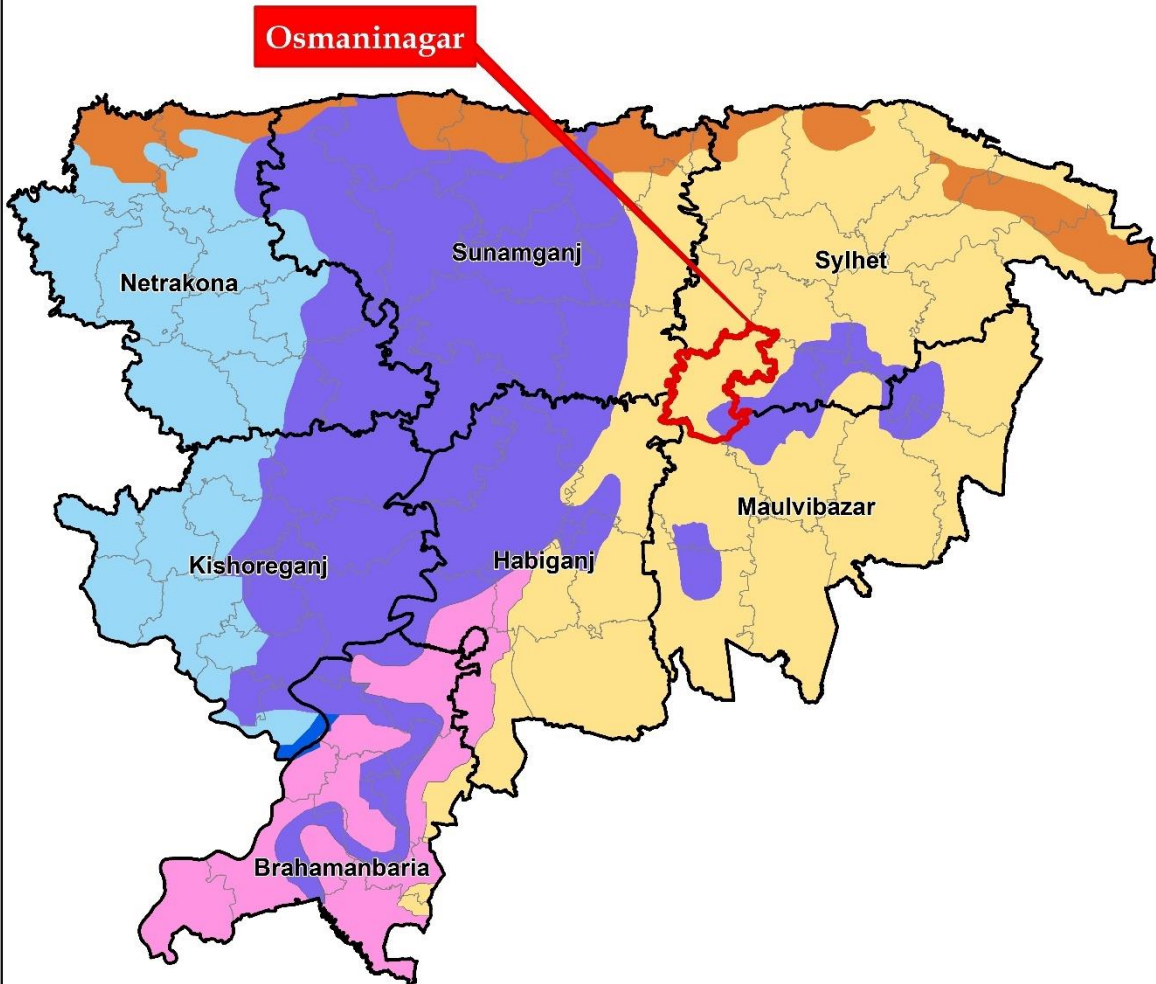
 <p>Government of the People's Republic of Bangladesh</p> <p>Bangladesh Haor and Wetland Development Board</p> <p>Master Plan of Haor Area</p> <p>Haor Type</p>	<p>Legend</p> <ul style="list-style-type: none">  District HQ  International Boundary  District Boundary  River <p>Haor Type</p> <ul style="list-style-type: none">  Deeply Flooded  Floodplain  Foothill <div style="text-align: right;">  Unplanned Hill </div> <div style="text-align: right;">  </div> <div style="text-align: right;">  <p>1:1,100,000</p> </div>	<p>Adapted from</p> <p>Haor Master Plan,</p> <p>Bangladesh</p> <p>Haor and</p> <p>Wetland</p> <p>Development Board</p>
---	---	--



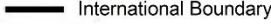












4.3 BIO-ECOLOGICAL CHARACTERISTICS

The Bio-ecological characteristics map of Balaganj and Osmani Nagar Upazila have been shown below. The map shows that Balaganj is mostly Haor Basin & is partially a part of Sylhet Hills. On the other hand, Osmani Nagar is mostly Sylhet Hills & is partially a part of Haor Basin. Therefore, adequate openings for the road and road structures should be maintained.



Bio-ecological Charecteristics of Osmaninagar Upazila



 Government of the People's Republic of Bangladesh Bangladesh Haor and Wetland Development Board Master Plan of Haor Area Bio-ecological Zone	<p>Legend</p> <ul style="list-style-type: none">  District HQ  International Boundary  District Boundary  Upazila Boundary <p>Bio-ecological Zone</p> <ul style="list-style-type: none">  Himalayan Piedment Plain  Madhupur Sal Tract  Brahmaputra-Jamuna Floodplain 	<ul style="list-style-type: none">  Surma-Kushiara Floodplain  Meghna Floodplain  Haor Basin  Sylhet Hills  Major Rivers <div style="text-align: center;">  10 0 10Km  </div>	<p>Adapted From Haor Master Plan, Bangladesh Haor and Wetland Development Board</p>
--	---	---	--

5 RURAL ROAD CONNECTIVITY TO THE VILLAGES

5.1 SUMMARY OF THE VILLAGE CONNECTIVITY IN BALAGANJ UPAZILA

The feature of rural road communications in Balaganj and Upazila is contrasted. In Balaganj Upazila, out of 158 villages, 15 are disconnected from the developed paved road network which brings huge suffering for the people of those villages. The total rural road network of Balaganj is 282.33 km and out of which, 95.19 km are paved and 187.15 km earthen.

Table 1: Total villages in the unions and their connectivity

SL No	Union	No of Villages	Connected Villages	Hard-to-Reach Villages
1	Balaganj	44	42	2
2	Boaljur	32	29	3
3	Dewan Bazar	44	37	7
4	Paschim Gauripur	19	16	3
5	Purba Gauripur	19	19	0
		158	143	15

5.2 VILLAGES AND THEIR CONNECTIVITY – UNION LEVEL

The consultant arranged a meeting at the Upazila conference room with and all the UP Chairman & their secretaries. The team interviewed a representative of each union and collected data about the HTRV.

Table 2: Union-wise connected & Hard-to-Reach Villages and their population

Union	Sl. No	Connected Villages	Population 2021 (Based on BBS 2011)	Hard-to-Reach Villages	Population 2021 (Based on BBS 2011)
Balaganj	1	Adityapur	767	Char Bota	799
	2	Babrakpur	703	Rupia	781
	3	Balagonj Bazar	3289		
	4	Bara Char	847		
	5	Batapatan	362		
	6	Berakhal	292		
	7	Brittania	433		
	8	Chandpur	1483		
	9	Chalk Pirpur	388		
	10	Char Bhuabatan	326		
	11	Char Haria	147		
	12	Char Natha	119		
	13	Char Subia	472		
	14	Char Sukia	93		
	15	Char Vita	479		
	16	Gaharmolai	619		

Union	Sl. No	Connected Villages	Population 2021 (Based on BBS 2011)	Hard-to-Reach Villages	Population 2021 (Based on BBS 2011)
	17	Gopkanu	312		
	18	Gorapur	289		
	19	Gourinathpur	537		
	20	Hasampur	827		
	21	Hossainpur	907		
	22	Ilashpur	188		
	23	Jagatpur	362		
	24	Jinarpur	158		
	25	Kalakanu	133		
	26	Kaliargaon	543		
	27	Kashipur	1148		
	28	Kazipur	783		
	29	Korcharpar	855		
	30	Kudlatipur	256		
	31	Madaripur	147		
	32	Mojlishpur	771		
	33	Narayanpur	224		
	34	Noapatan	458		
	35	Pirpur	416		
	36	Prasannapur	495		
	37	Radhakuna	1689		
	38	Rifatpur	1299		
	39	Satyapur	382		
40	Shahibagh	561			
41	Sibia	596			
42	Trilochanpur	770			
		Sub Total	25925		1580
Boaljur	1	Bade Ekachikan	208	Kadipur	395
	2	Bangalia	235	Makarshi	845
	3	Banigaon	361	Shindrikona	765
	4	Banogaon	105		
	5	Bhurbhuria	314		
	6	Binodpur	90		
	7	Chandirpara	1219		
	8	Daskin Majlishpur	451		
	9	Ekalima	159		
	10	Ekachikan	373		
	11	Ghugrakandi	108		
	12	Goyghar	23		
	13	Hushiarpur	294		
	14	Kamargaon	409		
	15	Kamarpur	512		

Union	Sl. No	Connected Villages	Population 2021 (Based on BBS 2011)	Hard-to-Reach Villages	Population 2021 (Based on BBS 2011)
	16	Mamudpur	792		
		Mobarakpur	202		
	17	Mohammed Shal	305		
	18	Mokbelpur	949		
	19	Monoharpur	1384		
	20	Nasiarpur	1369		
	21	Pachim Nurpur	672		
	22	Rajapur	1285		
	23	Roypur	167		
	24	Rupapur	1178		
	25	Sarbandapur	199		
	26	Shibpur	215		
	27	Shonapur	1834		
	28	Uzialpur	94		
		Sub Total	15506		2005
Dewan Bazar	1	Ahaemedpur	498	Bashirpur	603
	2	Alampur	322	Barkatpur	366
	3	Alapur	686	Kalampur	522
	4	Anwarpur	697	Kalimanzi	311
	5	Champarkandi	777	Mahamudpur	1243
	6	Char Alapur	819	Ratanpur	821
	7	Dafarpur	468		
	8	Dattapur	501		
	9	Daulatpur	360		
	10	Goyashpur	840		
	11	Hayaidarpur	1410		
	12	Hajipur	153		
	13	Hossenpur	1074		
	14	Ibrahimpur	406		
	15	Jagannathpur	142		
	16	Jahapur	417		
	17	Jamalpur	1866		
	18	Jatergaon	160		
	19	Kaluma	1431		
	20	Kuberali	490		
	21	Kukurali	456		
	22	Muktarpur	534		
	23	Naiamkhali	135		
	24	Nasiarpur	711		
	25	Niamatpur	478		
	26	Nijgharpur	758		
	27	Pachhal	622		

Union	Sl. No	Connected Villages	Population 2021 (Based on BBS 2011)	Hard-to-Reach Villages	Population 2021 (Based on BBS 2011)
	28	Purbopara	365		
	29	Roypur	58		
	30	Shankarpur	907		
	31	Shapur	450		
	32	Siorkhal	2840		
	33	Sirajpur	1544		
	34	Sulemanpur	169		
	35	Sultanpur	2246		
	36	Taltala	633		
	37	Ujialpur	337		
		Sub Total	26760		3866
Paschim Gauripur	1	Alampur	578	Atasan	3323
	2	Azizpur	1081	Harishaym	1731
	3	Baburgaon	203	Sarashpur	461
	4	Badarpur	43		
	5	Bashirpur	75		
	6	Daskin Gouripur	617		
	7	Dohalia	281		
	8	Ekachikan	299		
	9	Lohamura	402		
	10	Naljur	956		
	11	Purbo Khujkipur	933		
	12	Shasirpur	58		
	13	Sreenathpur	779		
	14	Tegharia	1090		
	15	Tekamurdda	523		
	16	Uttar Gauripur	480		
			Sub Total	8398	
Purba Gauripur	1	Amjur	580		
	2	Binodpur	476		
	3	Daulatpur Chak	642		
	4	Hamidpur	813		
	5	Kandigaon	356		
	6	Kayasthaghat	2107		
	7	Kayasthaghat Chak	1840		
	8	Kunamadhurai	284		
	9	Madhurahi	557		
	10	Maishashi	2276		
	11	Mirar Char	234		
	12	Narayanpur	1107		
	13	Narikhola	177		
	14	Natun Sunampur	1032		

Union	Sl. No	Connected Villages	Population 2021 (Based on BBS 2011)	Hard-to-Reach Villages	Population 2021 (Based on BBS 2011)
	15	Paschim Dekapur	1086		
	16	Purbadekapur	1384		
	17	Sadikpur	498		
	18	Taharbahar	572		
	19	Uttar Rukanpur	219		
		Sub Total	16240		

Summary of the Villages within Osmani Nagar Upazila

SL No	Union	No of Villages	Connected Villages	Hard-to-Reach Villages
1	Buronga Bazar	11	8	3
2	Dayamir	52	45	7
3	Goala Bazar	36	31	5
4	Omarpur	40	32	8
5	Osmanpur	53	50	3
6	Purba Pailanpur	12	12	0
7	Sadipur	36	30	6
8	Tajpur	47	16	31
	Total	287	224	63

Villages and their connectivity – Union level: Osmani Nagar Upazila

Union	Sl.No	Connected Villages	Population 2021 (Based on BBS 2011)	Hard-to-Reach Villages	Population 2021 (Based on BBS 2011)
Buronga Bazar	1	Dakshin Khayerpur	1284	Anarpur	655
	2	Hazipur	962	Kamargaon	1419
	3	Nij Burunga	2864	Pachim Sirajnagar	1566
	4	Pachim Tilapara	1920		
	5	Pearapur	691		
	6	Pratham Pasha	1015		
	7	Purbo Sirajnagar	1814		
	8	Purbo Tilapara	2981		
		Sub Total	13531		3640
	1	Alampur	192	Ataullah	1966
	2	Alapur	49	Chintamani	1397
	3	Ashrafpur	16	Dayamir	1863
	4	Bara Dhirarai	1618	Karbari	207
	5	Bramman Shasan	701	Noagaon	555
	6	Chandi Tiar	343	Raikdara	968
	7	Char Khalpar	154	Shaniargaon	267
	8	Chatalibanda	297		

Union	Sl.No	Connected Villages	Population 2021 (Based on BBS 2011)	Hard-to-Reach Villages	Population 2021 (Based on BBS 2011)
	9	Choto Dirarai	872		
	10	Dakaur Mahal	514		
	11	Daulatpur	914		
	12	Dayamir Bazar	133		
	13	Gangpar	1128		
	14	Ghoshgaon	1213		
	15	Husan Namki	795		
	16	Jagirderpara	338		
	17	Kaiyakhair	1340		
	18	Kaliya	585		
	19	Kaurai	356		
	20	Keshabpur	290		
	21	Khagdiar	1435		
	22	Khalpar	849		
	23	Khandakar Bazar	629		
	24	Khanjulpur	153		
	25	Khapan	582		
	26	Kharai	138		
	27	Khatpur	285		
	28	Khayirpur	61		
	29	Kurua Bazar	90		
	30	Mandal Kapan	516		
	31	Mirder Char	196		
	32	Mirergaon	683		
	33	Mirpara	748		
	34	Nij Kurua	2411		
	35	Palpara	123		
	36	Radhakona	270		
	37	Rangalpur	299		
	38	Sannashi Para	176		
	39	Saraspur	884		
	40	Sirajpur	244		
	41	Suargaon	939		
	42	Tajpur	247		
	43	Uttarrahabpur	392		
	Sub Total		24198		7223
	1	Awatoil	667	Bherukola	357
	2	Bagalpur	754	Dashpara	402
	3	Budarpur	190	Godair Char	710
	4	Dattagram	641	Gramtala	446
	5	Dattakapon	32	Kalasara	531
	6	Ekarai	444		
	7	Goalabazar	1482		

Union	Sl.No	Connected Villages	Population 2021 (Based on BBS 2011)	Hard-to-Reach Villages	Population 2021 (Based on BBS 2011)	
Goala Bazar	8	Ilashpur	2004			
	9	Jahirpur	495			
	10	Jardakushi	403			
	11	Joyfarpur	1383			
	12	Kalarai	1939			
	13	Kuchbubai	467			
	14	Kuchkurai	464			
	15	Mantail	215			
	16	Matiagram	1038			
	17	Mobarakpur	161			
	18	Nagarikapon	569			
	19	Nayarai	269			
	20	Nij Chalk	127			
	21	Nij Karasni	1459			
	22	Oyeakushi	382			
	23	Oyeasukla	216			
	24	Pachim Brahmangram	1077			
	25	Purbo Brahmangram	2290			
	26	Purbo Kayesta Para	538			
	27	Shasarkandi	595			
	28	Taltala	279			
	29	Terahati	1195			
	30	Uttarmobarakpur (part)	222			
	31	Uttarnurpur	718			
		Sub Total		22715		2446
	Omarpur	1	Abdullahpur	583	Hamthanpur	729
		2	Aditaypur	111	Kamalpur	359
		3	Aushpur	508	Khujkipur	1147
		4	Banagram	390	Kotowalpur	893
		5	Bara Isabpur	2053	Lama Hijal Shua	217
		6	Bhorout	175	Lama Isabpur	1415
7		Dulalpur	63	Madhabpur	212	
8		Habashpur	303	Naya Kadimpur	335	
9		Hijal Shua	570			
10		Itachaki	198			
11		Kalia	117			
12		Khadimpur	2013			
13		Majhigaon	766			
14		Majidpur	148			
15		Malihani	2243			
16		Mandaruka	362			
17		Matikara	142			
18		Mirjapur	113			

Union	Sl.No	Connected Villages	Population 2021 (Based on BBS 2011)	Hard-to-Reach Villages	Population 2021 (Based on BBS 2011)
	19	Mollapara	573		
	20	Nij Mandaruka	768		
	21	Omarpur	1060		
	22	Omarpur Bazar	394		
	23	Pachim Gram	695		
	24	Pachim Majlishpur	597		
	25	Pazra Golpur	255		
	26	Purbo Gram	330		
	27	Rongborong	169		
	28	Saidpur	1416		
	29	Shajahanpur	646		
	30	Shibpur	89		
	31	Tahirpur	249		
	32	Uttar Tajpur	716		
Sub Total			18815		5307
Osmanpur	1	Abdullahpur	438	Mallikpur	292
	2	Alipur	603	Osmanpur	501
	3	Atapur	72	Panch Para	1521
	4	Atgaon	482		
	5	Bade Majlishpur	282		
	6	Bajitpur	618		
	7	Barshel	824		
	8	Basia	384		
	9	Betkhai	519		
	10	Bharakhal	665		
	11	Bibi Shaida	294		
	12	Braman Sasan	597		
	13	Burburia	92		
	14	Chalk Isamati	113		
	15	Char Subia	184		
	16	Dhanpur	718		
	17	Ekasani	346		
	18	Gopalpur	267		
	19	Hossainpur	545		
	20	Isamati	832		
	21	Kabulpur	316		
	22	Kajirgaon	572		
	23	Kittii Kamarpur	392		
	24	Kunaban	957		
	25	Kutubpur	68		
	26	Lamapara	878		
	27	Latibpur	973		
	28	Madhabpur	559		

Union	Sl.No	Connected Villages	Population 2021 (Based on BBS 2011)	Hard-to-Reach Villages	Population 2021 (Based on BBS 2011)
	29	Mahabbatpur	109		
	30	Mandar Kapon	47		
	31	Mirjapur	172		
	32	Mirpur	461		
	33	Mominpur	1306		
	34	Nasratpur	233		
	35	Nyamatpur	396		
	36	Pariarkhai	684		
	37	Ragabpur	376		
	38	Raigdanda	990		
	39	Raji Haji	70		
	40	Rangapur	724		
	41	Rautkhai	1925		
	42	Sahebagh	608		
	43	Samaspur	131		
	44	Satiya	58		
	45	Shibrampur	384		
	46	Sonatola	429		
	47	Sultanabad	1703		
	48	Tahirpur	680		
49	Thanagaon	1264			
50	Uttar kamarpur	469			
	Sub Total		26809		2314
Purba Pailanpur	1	Butpara	272		
	2	Fajilpur	814		
	3	Galimpur	725		
	4	Hamjapur	1631		
	5	Ichhapur pashim	704		
	6	Ichhapur purbo	889		
	7	Jalalpur	1689		
	8	Kitti Jalalpur	1082		
	9	Oiha	1574		
	10	Pailanpur	1457		
	11	Rashidpur	634		
	12	Sadekpur	198		
	Sub Total		11669		
Sadipur	1	Andhair Chak	269	Dakshin Ibrahimpur	1821
	2	Banaia	904	Dakshin Kalanir Char	1213
	3	Begumpur	622	Dakshin Nurpur	691
	4	Berarai	347	Saidpur	988
	5	Char Tajpur	728	Sankarpasha	723
	6	Chargaon	1046	Uttar Kananir Char	864
	7	Chatalpar	1251		

Union	Sl.No	Connected Villages	Population 2021 (Based on BBS 2011)	Hard-to-Reach Villages	Population 2021 (Based on BBS 2011)	
	8	Darkha	1463			
	9	Fakirabad	645			
	10	Gaburtaki	495			
	11	Gajia	1710			
	12	Gujatali	382			
	13	Halimpur	736			
	14	Halimpur 2nd part	438			
	15	Kashrupur	2174			
	16	Kashrupur Bazar	91			
	17	Kurpur	296			
	18	Lama Gaburtaki	1311			
	19	Lama Tajpur	939			
	20	Mirpur	314			
	21	Nalikona	272			
	22	Palpara	175			
	23	Paschim Mobarakpur	560			
	24	Purbo Kalanir Char	758			
	25	Purbo Mobarakpur	537			
	26	Purbo Tajpur	1201			
	27	Rahamatpur	1111			
	28	Sadipur	1915			
	29	Sadipur Bazar	609			
	30	Sundikhala	1751			
			Sub Total	25050		6300
	Tajpur	1	Durajpur	947	Baraya	1706
		2	Ekashani	59	Bharera	1290
		3	Fatehpur	214	Bharera Madarpur	658
		4	Kashikapon	1339	Chandpur	526
		5	Kashipara	887	Char Bharera	382
		6	Mollapara	596	Char Isabpur	922
7		Nakirkona	430	Dashal	917	
8		Palpara	354	Duliarband	1130	
9		Paschim Kamarpur	399	Fatepur	481	
10		Pichrakandi	436	Gayeshpur	234	
11		Rahpur	45	Haripur	685	
12		Sonaikandi	176	Hastipur	661	
13		Sonarpara	615	Jahapur	183	
14		Syratpur	567	Jiafak	100	
15		Tajpur	925	Kadipur	2357	
16		Tajpur Bazar	563	Kalasar	159	
17				Kaminikandi	500	
18				Khod Bharera	70	
19				Lalkailash	495	

Union	Sl.No	Connected Villages	Population 2021 (Based on BBS 2011)	Hard-to-Reach Villages	Population 2021 (Based on BBS 2011)
	20			Matihni	32
	21			Mokam Para	702
	22			Natpur	385
	23			Paschim Rukonpur	1030
	24			Purbo Rukonpur	269
	25			Rabidas	1149
	26			Rangia	649
	27			Sailda	614
	28			Silmanpur	443
	29			Sultanpur	255
	30			Udarkona	347
	31			Uttar Mojlishpur	1117
	Sub Total		8552		20448

5.3 MAP OF HARD-TO-REACH VILLAGES & PROPOSED ROADS

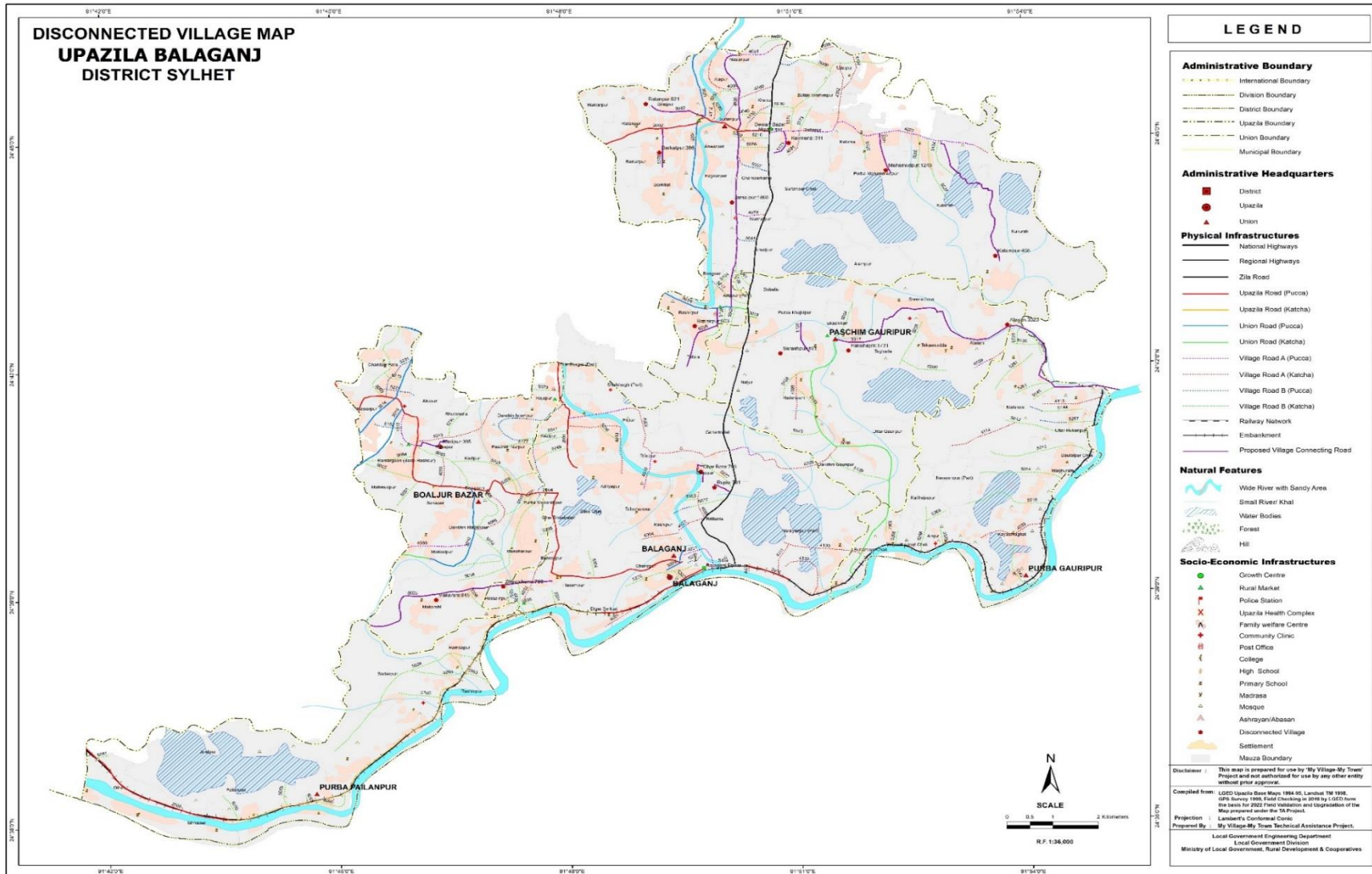


Figure 6: Balaganj Upazila Map

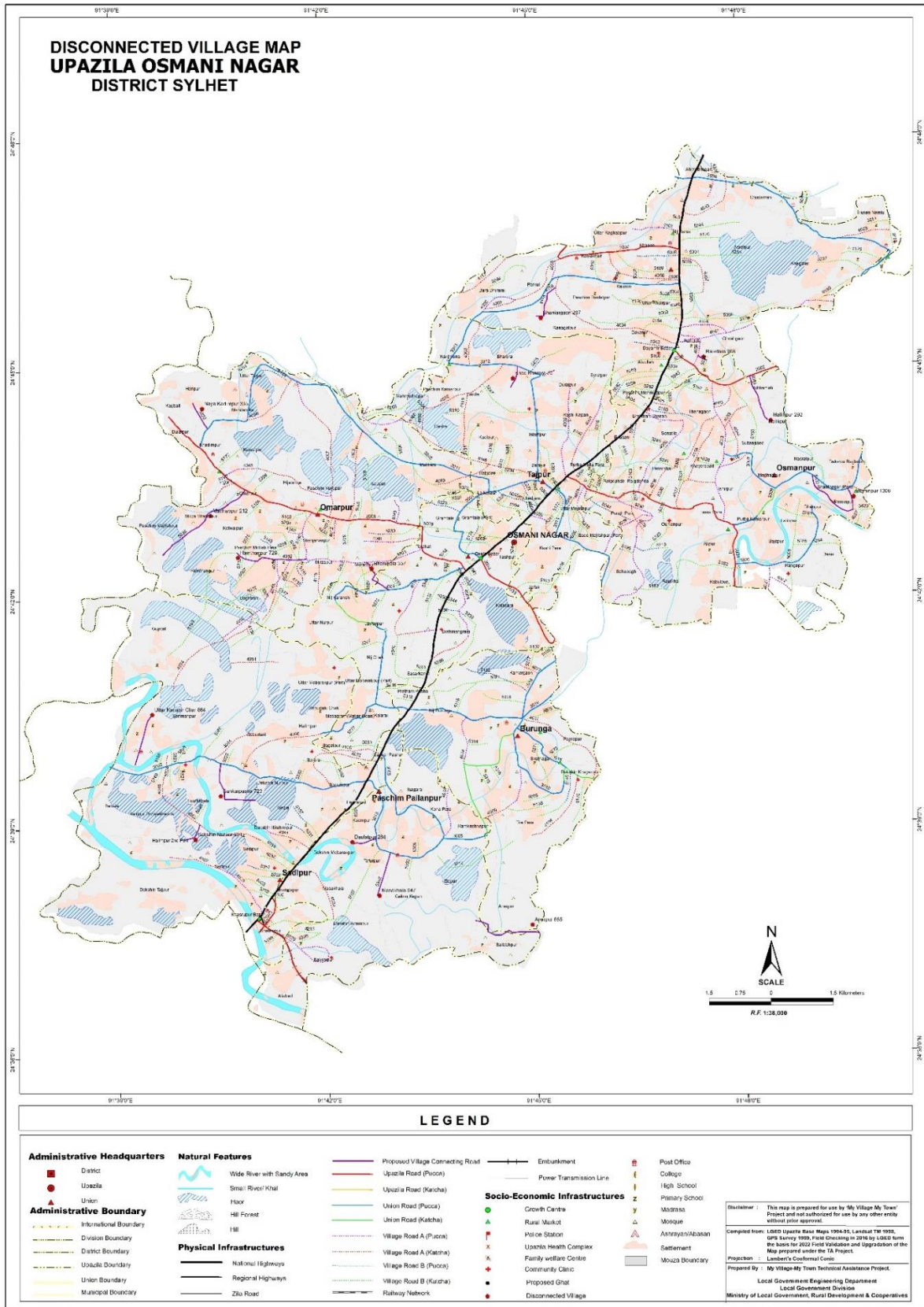


Figure 7: Osmani Nagar Upazila Map

6 DATA COLLECTION & ANALYSIS

The consultant team collected data from the field on Hard-to-Reach Villages. Data were collected from those villages including population, road alignment information (*type, length, condition*), travel time, a structure required on the alignment, potential Riverine routes that can be used for a multi-modal transport system etc. The data were then analyzed, categorized, and finally used to obtain a priority list along with a map (*Figure:5*) showing prioritized roads and Hard-to-Reach Villages. The proposed Riverine & road connectivity by the UE office have been discussed in this section.

6.1 PROPOSED ROADWAY FOR HARD-TO-REACH VILLAGES:

At present, roads are the most dominant mode of transportation. Most of the structures were built on the rivers to make road communication effective.

Table 3: Summary of the rural roads in Balaganj Upazila

Total Road Length of the Upazila (KM)	Paved Length (KM)	Unpaved Length (KM)	Length of unpaved roads of disconnected villages (KM)
282.33	95.19	187.15	44.56

6.1.1 PROPOSED ALL-WEATHER ROUTES IN BALAGANJ UPAZILA:

There are 7 all-weather roads proposed to connect the HTRV within the Upazila. The road name, ID, road condition, and the length of the unpaved roads are as bellow;

Table 4: Proposed all-weather roads in Balaganuj Upazila

SL No	Road Name	Road ID	Road Type by Surface Condition	Unpaved length (km)
1	Pashim Gowripur UP-Donaram Bazar Road. (Balagonj Part).	691083017	All Weather	8
2	Ratanpur-Sheorkhal (Barkatpur Jame Mosque)-Hawneya Haor Road	691085378	All Weather	1
3	Taltolabazer (Boshirpur) - Jame Mosque - Boro Kandi Road.	691085226	All Weather	1.5
4	Adityapur-Rifatpur-Charvuta	No ID	All Weather	1.5
5	Osmanigoj Bazar-Pashim Gowripur UP Road.	691083017	All Weather	8
6	Taltalabazar-Jamalpur-Anwerpur-Khondokar Bazar Road.	691084035	All Weather	6.41
7	kalibari bazar-Kadipur connected road	No ID	All Weather	1
8	Murarbazar-Kuberail via kukurail to monua river side village road	No ID	All Weather	0.5
9	Niz gohorpur-Digikara road.	691085123	All Weather	0.9

SL No	Road Name	Road ID	Road Type by Surface Condition	Unpaved length (km)
10	Janakilan-Md.pur Road	691085071	All Weather	0.4
11	Shadekpur-Makarshi Road	691085023	All Weather	3.5
12	Madrashabazar-Ratanpur Road.	691085062	All Weather	1.1
13	Sultanpur Pucca Road -Rupia Gram Rd Via Bittonia GPS.	691085356	All Weather	2.5
14	Sarospur Aliamadrasha road	691085125	All Weather	1.6
15	Shadekpur-Makarshi Road	691085023	All Weather	4.15

Table 5: Proposed roads for Hard-to-Reach Villages having No ID

SI No	Road Name	Road ID	Unpaved length (km)
1	Adityapur-Rifatpur-Charvuta	No ID	1.5
2	kalibari bazar-Kadipur connected road	No ID	1
3	Murarbazar-Kuberail via kukurail to monua river side village road	No ID	0.5

6.1.2 PRIORITY FOR ROAD DEVELOPMENT

Considering resources constraint, benefited a group of people, the time required to travel & road hierarchy, a priority list has been developed (Annexure- 2) for the HTRV (Hard to Reach Villages). The priority score has been determined according to following

Table 6: Considered weightage values for the prioritization

Criteria	Weightage
Population	30
Travel Time	20
Cost per 1000 Population	25
Road Type	25
Total=	100

It has been observed that there are a number of roads that bear the same score. In these cases, the minimum budget required for providing connectivity to thousands of people- will get more priority compared to more budget-required roads. The roads bearing ID will have higher priority than the roads without ID.

7 CONCLUSION & RECOMMENDATIONS

- Balaganj Upazila is located within the *partially flash flood and foothill zone*. Balaganj is partly covered by 13 major haors/ wetlands and there exist 3(three) rivers flowing over the Upazila that dominate the ecosystem, and transport system of the Upazila. During monsoons, these rivers carry a huge volume of flood water.
- As the Upazila is heavily flooded during monsoon, rural roads and structures are highly vulnerable in this Upazila.
- The Upazila has a total number of 15 Hard-to-Reach Villages. To develop rural connectivity, there are proposals for both all-weather and submersible roads. This report contains a list of roads with their priority. The priority has been determined based on Population, Travel Time, Cost per KM/1000 people & Road Hierarchy.
- This Upazila is highly vulnerable to disasters. Due to climate change, vulnerability is getting intense. The year 2022 has shown catastrophic flood that was not seen over the last 18 years (*last in 2004 similar to 1998 & 1988*). Therefore, it is highly recommended to study the road alignments before going for investment.
- Case-by-case design of roads in this Upazila considering different aspects such as exposure to floods, erosion etc. is highly recommended. A special study regarding the road and structure design of the Balaganj Upazila in Sylhet district is highly recommended.

ANNEXURE - 1

DETAILS OF GROWTH CENTER & HATBAZAR

Sl. No.	Union	Market Name	Market Category (GC=Growth Center, HB=Hat Bazar)	Market Listed? (Yes/ No)	Market Category (General/Special/ Collection center)	Market Category (Wholesale/Retail/both)	Hat Day	Chandina Viti (Number)	Chandina Viti (Land)	Chandina Viti (Shop)	Land Area (Acre)			Lease/ Khas Collection BDT (2020)	Lease/ Khas Collection BDT (2019)
											Toha	Khas	Private		
1	2 No. Boaljur	Kalibari bazar	HB	Yes	General Market	Wholesale	1	48	0.16	28	0.12	0.62	0.00	1740	1665
2	3 No. Dewan Bazar	Madrasa bazar	HB	Yes	General Market	Wholesale	1	58	0.36	50	0.38	1.22	0.00	1105500	103000
3	3 No. Dewan Bazar	Murar bazar	HB	Yes	General Market	Wholesale	1	34	0.34	30	0.08	0.22	0.00	52000	32000
4	4 No. Pashchim Gauripur	Bangla bazar	HB	Yes	General Market	Wholesale	1	0	0.00	0	0.00	0.77	0.00	1350	0
5	4 No. Pashchim Gauripur	Taltalar bazar	HB	Yes	General Market	Wholesale	1	0	0.00	0	0.00	0.33	0.00	50	0
6	5 No. Balaganj	Balaganj bazar	GC	Yes	General Market	Both	2	37	0.15	37	0.48	0.96	0.00	337000	268500
7	5 No. Balaganj	Kaligonj bazar	HB	Yes	General Market	Both	1	17	0.09	17	0.10	0.23	0.00	4500	2000
8	Balaganj	Ilaspur bazar	HB	No	0	0	0	0	0.00	0	0.00	0.00	0.00	0	0
9	Balaganj	Nandir bazar	HB	No	0	0	0	0	0.00	0	0.00	0.00	0.00	0	0
10	Boaljur	Boaljur bazar	HB	Yes	General Market	Both	1	32	0.16	26	0.20	0.50	0.00	1800	1600
11	Boaljur	Bot tola bazar	HB	No	0	0	0	0	0.00	0	0.00	0.00	0.00	0	0
12	Boaljur	Mokonda bazar	HB	No	0	0	0	0	0.00	0	0.00	0.00	0.00	0	0
13	Boaljur	Naya bazar	HB	No	0	0	0	0	0.00	0	0.00	0.00	0.00	0	0
14	Dewan Bazar	Charpur bazar	HB	No	0	0	0	0	0.00	0	0.00	0.00	0.00	0	0
15	Dewan Bazar	Deawan bazar	GC	No	0	0	0	0	0.00	0	0.00	0.00	0.00	0	0
16	Dewan Bazar	Jonokallyan nuton bazar	HB	No	0	0	0	0	0.00	0	0.00	0.00	0.00	0	0
17	Dewan Bazar	Noshiorpur bazar	HB	No	0	0	0	0	0.00	0	0.00	0.00	0.00	0	0

Sl. No.	Union	Market Name	Market Category (GC=Growth Center, HB=Hat Bazar)	Market Listed? (Yes/ No)	Market Category (General/Special/Collection center)	Market Category (Wholesale/Retail/both)	Hat Day	Chandina Viti (Number)	Chandina Viti (Land)	Chandina Viti (Shop)	Land Area (Acre)			Lease/ Khas Collection BDT (2020)	Lease/ Khas Collection BDT (2019)
											Toha	Khas	Private		
18	Pashchim Gauripur	Azizpur bazar	HB	No	0	0	0	0	0.00	0	0.00	0.00	0.00	0	0
19	Pashchim Gauripur	Pirer bazar	HB	No	0	0	0	0	0.00	0	0.00	0.00	0.00	0	0
20	Purba Gauripur	Osmameganj bazar	HB	No	0	0	0	0	0.00	0	0.00	0.00	0.00	0	0
21	Purba Pawlanpur	Hamsapur bazar	HB	No	0	0	0	0	0.00	0	0.00	0.00	0.00	0	0
22	Purba Pawlanpur	Jalal pur bazar	HB	No	0	0	0	0	0.00	0	0.00	0.00	0.00	0	0
23	Purba Pawlanpur	Janater bazar	HB	No	0	0	0	0	0.00	0	0.00	0.00	0.00	0	0
24	Purba Pawlanpur	Prem bazar	HB	No	0	0	0	0	0.00	0	0.00	0.00	0.00	0	0

List of Growth Center and Hat Bazar of Osmani Nagar Upazila

Sl. No.	Union	Market Name	Market Category (GC=Growth Center, HB=Hat Bazar)	Market Listed? (Yes/ No)	Market Category (General/Special/Collection center)	Market Category (Wholesale/Retail/both)	Hat Day	Chandina Viti (Number)	Chandina Viti (Land)	Chandina Viti (Shop)	Land Area (Acre)			Lease/ Khas Collection on BDT (2020)	Lease/ Khas Collection on BDT (2019)
											Toha	Khas	Private		
1	Buronga Bazar	Burung bazar	HB	Yes	General Market	Wholesale	2	16	0.45	48	0.12	0.72	0.00	2666	17600
2	Buronga Bazar	Jamtala bazar	HB	Yes	General Market	Wholesale	2	5	0.06	15	0.07	0.20	0.00	1801	2100
3	Dayamir	Dayamir bazar	GC	Yes	General Market	Wholesale	2	38	0.25	42	0.15	1.14	0.00	145600 2	160054 5
4	Dayamir	Kurua bazar	HB	Yes	General Market	Wholesale	2	29	0.20	31	0.20	0.62	0.00	500	3050
5	Dayamir	Khandakar bazar	HB	Yes	General Market	Wholesale	2	60	0.38	52	0.34	1.05	0.00	7999	16800
6	Dayamir	Chaker bazar	HB	Yes	General Market	Wholesale	2	2	0.17	20	0.10	0.34	0.00	166	200

Sl. No.	Union	Market Name	Market Category (GC=Gro with Center, HB=Hat Bazar)	Market Listed? (Yes/ No)	Market Category (General/ Special/ Collection center)	Market Category (Wholesale/ Retail/both)	Hat Day	Chandina Viti (Number)	Chandina Viti (Land)	Chandina Viti (Shop)	Land Area (Acre)			Lease/ Khas Collecti on BDT (2020)	Lease/ Khas Collecti on BDT (2019)
											Toha	Khas	Private		
7	Goala Bazar	Goala bazar	GC	Yes	General Market	Both	2	1	0.33	100	0.70	1.60	0.00	3160995	10961500
8	Goala bazar	Kalarai bazar	HB	Yes	General Market	Wholesale	2	0	0.00	0	0.02	0.02	0.00	1333	20000
9	Omarpur	Omarpur Bazar (Naya bazar)	HB	Yes	General Market	Wholesale	2	8	0.11	15	0.32	0.58	0.00	87500	115697
10	Omarpur	Khadimpur Bazar (New market Bazar)	HB	Yes	General Market	Wholesale	0	0	0.00	0	0.00	0.00	1.20	1360	5245
11	Omarpur	Khonkeron pur bazar	HB	No	0	0	0	0	0.00	0	0.00	0.00	0.00	0	0
12	Osmanpur	Madar bazar	HB	Yes	General Market	Wholesale	2	45	0.22	62	0.12	0.56	0.00	1011	1683
13	Osmanpur	Khler mukh bazar	HB	Yes	General Market	Wholesale	2	18	0.13	18	0.14	0.47	0.00	173	100
14	Osmanpur	Maynar bazar	HB	Yes	General Market	Wholesale	2	5	0.02	4	0.05	0.14	0.00	173	213
15	Osmanpur	Kayrabad bazar	HB	Yes	General Market	Wholesale	2	2	0.04	4	0.08	0.16	0.00	173	100
16	Paschim Pailanpur	Khasrupur bazar	GC	No	0	0	0	0	0.00	0	0.00	0.00	0.00	0	0
17	Sadipur	Kashorpur bazar	HB	Yes	General Market	Wholesale	2	13	0.07	5	0.05	0.15	0.00	52500	66000
18	Tajpur	Tajpur bazar	HB	Yes	General Market	Wholesale	2	24	0.20	30	0.45	0.94	0.00	57914	75400
19	Tajpur	Rakhalgonj bazar	HB	Yes	General Market	Wholesale	2	24	0.18	30	0.24	0.47	0.00	6656	7300

ANNEXURE - 2

PRIORITY LIST FOR ROAD DEVELOPMENT OF BALANGANJ UPAZILA

SL No	Upazila	Connecting Union	Connecting Village	Village Population BBS 2011	Population 2021 (Based on BBS 2011)	Road Name	Road ID	Road Type	Road Type by Surface Condition	Total Road Length	Paved length (Km)	HBB Length (km)	Unpaved length (Km)	Total Road Length to be Developed	HBB + Unpaved in (km)	Approx. Cost of Road (Lac)	Structure/ Gap (Meter)	Cost of Structure (in Lac)	Total Cost (in lac) (Roads + Structures)	Population /KM	Tentative Budget/1000 Population (in lac)	Travel Time (in min)	Weightage for Population	Weightage for Travel Time	Weightage for Cost per 1000 Pop	Weightage for Road Type	Total Weightage	Priority
1	Balaganj	Paschim Gauripur	Atasan	3323	3807	Pashim Gowripur UP-Donaram Bazar Road. (Balagonj Part).	691083017	UNR	All Weather	8.50	0.50		8.00	8.50	8.00	960.00	50.00	450.00	1410.00	476	370.33	120.00	20	18	25	20	83	1
2	Balaganj	Paschim Gauripur	Harishaym	1731	1983	Osmanigoj Bazar-Pashim Gowripur UP Road.	691083017	UNR	All Weather	8.50	0.50		8.00	8.50	8.00	960.00	0.00	0.00	960.00	248	484.04	120.00	18	18	25	20	81	2
3	Balaganj	Dewan Bazar	Jamalpur	1866	2138	Taltalabazar-Jamalpur-Anwerpur-Khondokar Bazar Road.	691084035	VRA	All Weather	7.91	1.50		6.41	7.91	6.41	769.20	0.00	0.00	769.20	334	359.78	96.15	20	16	25	12	73	3
4	Balaganj	Dewan Bazar	Mahamudpur	1243	1424	Janakilan-Md.pur Road	691085071	VRB	All Weather	0.40			0.40	0.40	0.40	48.00	0.00	0.00	48.00	3560	33.70	6.00	18	10	25	12	65	4
5	Balaganj	Boaljur	Shindrikona	765	877	Shadekpur-Makarshi Road	691085023	VRB	All Weather	4.15			4.15	4.15	4.15	498.00	0.00	0.00	498.00	211	568.16	62.25	15	16	20	12	63	5
6	Balaganj	Dewan Bazar	Kalampur	456	522	Murabazar-Kuberail via kukurail to monua river side village road	No ID	VRB	All Weather	0.50			0.50	0.50	0.50	60.00	0.00	0.00	60.00	1045	114.84	7.50	15	10	25	12	62	6
7	Balaganj	Dewan Bazar	Ratanpur	821	941	Madrashabazar-Ratanpur Road.	691085062	VRB	All Weather	1.10			1.10	1.10	1.10	132.00	0.00	0.00	132.00	855	140.33	16.50	15	10	25	12	62	7
8	Balaganj	Balaganj	Char Bota	799	915	Adityapur-Rifatpur-Charvuta	No ID	VRB	All Weather	1.50			1.50	1.50	1.50	180.00	0.00	0.00	180.00	610	196.62	22.50	15	10	25	12	62	8
9	Balaganj	Dewan Bazar	Bashirpur	603	691	Taltolabazer (Boshirpur) - Jame Mosque - Boro Kandi Road.	691085226	VRB	All Weather	1.50			1.50	1.50	1.50	180.00	0.00	0.00	180.00	461	260.53	22.50	15	10	25	12	62	9
10	Balaganj	Boaljur	Kadipur	395	453	kalibari bazar-Kadipur connected road	No ID	VRB	All Weather	1.00			1.00	1.00	1.00	120.00	0.00	0.00	120.00	453	265.15	15.00	15	10	25	12	62	10
11	Balaganj	Dewan Bazar	Barkatpur	366	419	Ratanpur-Sheorkhal(Barkatpur Jame Mosque)-Hawneya Haor Road	691085378	VRB	All Weather	1.00			1.00	1.00	1.00	120.00	0.00	0.00	120.00	419	286.16	15.00	15	10	25	12	62	11
12	Balaganj	Dewan Bazar	Kalimanzi	311	356	Niz gohorpur-Digikara road.	691085123	VRA	All Weather	0.90			0.90	0.90	0.90	108.00	0.00	0.00	108.00	396	303.09	13.50	15	10	25	12	62	12
13	Balaganj	Balaganj	Rupia	781	895	Sultanpur Pucca Road - Rupia Gram Rd Via Bittonia GPS.	691085356	VRB	All Weather	2.50			2.50	2.50	2.50	300.00	0.00	0.00	300.00	358	335.26	37.50	15	10	25	12	62	13
14	Balaganj	Paschim Gauripur	Sarashpur	461	528	Sarospur Aliamadrasha road	691085125	VRB	All Weather	1.60			1.60	1.60	1.60	192.00	0.00	0.00	192.00	330	363.50	24.00	15	10	25	12	62	14
15	Balaganj	Boaljur	Makarshi	845	968	Shadekpur-Makarshi Road	691085023	VRB	All Weather	3.50			3.50	3.50	3.50	420.00	67.00	603.00	1023.00	277	1056.63	52.50	15	10	15	12	52	15

*** Cost for Roads & Structures; (All Weather Rd= 120 lac/km, Submersible= 180 lac/km, Structure= 9 lac/m)
 *** Weightage Values; (Population = 30, Travel Time= 20, Cost per KM/1000 people= 25, Road Hierarchy= 25)

Road Priority for Connecting HTRV of Osmani Nagar Upazila

SL No	Upazila	Connecting Union	Connecting Village	Village Population BBS 2011	Population 2021 (Based on BBS 2011)	Road Name	Road ID	Road Type	Road Type by Surface Condition	Total Road Length	Paved length (Km)	HBB Length (km)	Unpaved length (Km)	Total Road Length to be Developed	HBB + Unpaved in (km)	Approx. Cost of Road (Lac)	Structure/ Gap (Meter)	Cost of Structure (in Lac)	Total Cost (in lac) (Roads + Structures)	Population /KM	Tentative Budget/1000 Population (in lac)	Travel Time (in min)	Weightage for Population	Weightage for Travel Time	Weightage for Cost per 1000 Pop	Weightage for Road Type	Total Weightage	Priority
1	Osmani Nagar	Buronga Bazar	Anarpur	2233	2558	Anourpur road- Churiar Khal - bollovpur Road	No ID	VRB	Submersible	5.00			5.00	5.00	5.00	600.00	0.00	0.00	600.00	512	234.51	75.00	20	16	25	12	73	1
2	Osmani Nagar	Omarpur	Hamthanpur	729	835	Sekandarpur- Hamthanpur-Mullapara-Mojlishpur Road.	691964012	VRA	All Weather	4.60	2.10		2.50	4.60	2.50	300.00	1.80	16.20	316.20	334	378.56	37.50	15	10	25	15	65	2
3	Osmani Nagar	Omarpur	Muminpur	1306	1496	Khalermuk-Mader Bazar - Taltola Bazar	691965333	VRB	All Weather	2.00			2.00	2.00	2.00	240.00		0.00	240.00	748	160.39	30.00	18	10	25	12	65	2
4	Osmani Nagar	Dayamir	Raikdara	968	1109	Raikdara LGED Road to Khoshgaon LGED Load	No ID	VRB	All Weather	2.00			2.00	2.00	2.00	240.00	0.00	0.00	240.00	555	216.39	30.00	18	10	25	12	65	2
5	Osmani Nagar	Dayamir	Noagaon	555	636	Sowargoan Parkul Road (Sathpur) - Sorisepur village Road.	691964118	VRA	All Weather	1.70	0.50		1.20	1.70	1.20	144.00	0.00	0.00	144.00	530	226.45	18.00	15	10	25	12	62	3
6	Osmani Nagar	Osmanpur	Mallikpur	292	335	Doyamir- Murar bazar Road- Mollikpur Road	691965005	VRB	All Weather	1.90	1.20		0.71	1.90	0.71	84.60	0.00	0.00	84.60	475	252.87	10.58	15	10	25	12	62	3
7	Osmani Nagar	Omarpur	Naya Khadimpur	725	831	Tajpur-Khadimpur rd-Islampur Via Gusso gram	691965299	VRA	All Weather	2.00			2.00	2.00	2.00	240.00	0.00	0.00	240.00	415	288.92	30.00	15	10	25	12	62	3
8	Osmani Nagar	Paschim Pailanpur	Masakhala	647	741.3081	Begumpur -Hazepur pucca road -Msakhola Rd Via Bongo Bondhu bridge	691965302	VRB	All Weather	1.00			1.00	1.00	1.00	120.00	0.00	0.00	120.00	741	161.88	15.00	15	10	25	12	62	3
9	Osmani Nagar	Osmanpur	Madhobpur	625	716	Khoirabad bazer -Mader Bazer Road - Madhabpur khataKhalpar Rd	691965327	VRB	All Weather	1.50			1.50	1.50	1.50	180.00	0.00	0.00	180.00	477	251.36	22.50	15	10	25	12	62	3
10	Osmani Nagar	Goala Bazar	Bherukola	357	409	Bherukola Anhar Mia House to Nij Karasni Jame Mosque Road	No ID	VRB	All Weather	1.00			1.00	1.00	1.00	120.00	0.00	0.00	120.00	409	293.37	15.00	15	10	25	12	62	3
11	Osmani Nagar	Sadipur	Dakshin Nurpur	691	792	Keshobkhali Bridge to Sundikhola Connecting Road	No ID	VRB	All Weather	1.50			1.50	1.50	1.50	180.00	0.00	0.00	180.00	528	227.35	22.50	15	10	25	12	62	3
12	Osmani Nagar	Sadipur	Sankarpasha	723	828	Chatolpar Bazar - Chatolpar Madrasha Road	No ID	VRB	All Weather	1.50			1.50	1.50	1.50	180.00	0.00	0.00	180.00	552	217.29	22.50	15	10	25	12	62	3
13	Osmani Nagar	Sadipur	Uttar Kananir Char	864	990	Purbo Sundikhola Late Abbas Ullah House - Ibrahimpur Demakhali Culvert Road	No ID	VRB	All Weather	1.50			1.50	1.50	1.50	180.00	25.00	225.00	405.00	660	409.12	22.50	15	10	25	12	62	3
14	Osmani Nagar	Dayamir	Shaniargaon	267	306	Dayamer-Khaerpur-Rangalpur Road	691965003	VRB	All Weather	1.46			1.46	1.46	1.46	175.20	0.00	0.00	175.20	210	572.70	21.90	15	10	20	12	57	4
15	Osmani Nagar		Daulatpur	284	325	Begumpur -Hazepur pucca road - Daulatpur Rd	691965304	VRB	All Weather	1.50			1.50	1.50	1.50	180.00	1.50	13.50	193.50	217	594.66	22.50	15	10	20	12	57	4
16	Osmani Nagar	Tajpur	Khod Bharera	70	80	Tajpur - Khod Bharera road	No ID	VRB	All Weather	1.50			1.50	1.50	1.50	180.00	0.00	0.00	180.00	53	2244.30	22.50	15	10	10	12	47	5

*** Cost for Roads & Structures; (All Weather Rd= 120 lac/km, Submersible= 180 lac/km, Structure= 9 lac/m)
 *** Weightage Values; (Population = 30, Travel Time= 20, Cost per KM/1000 people= 25, Road Hierarchy= 25)